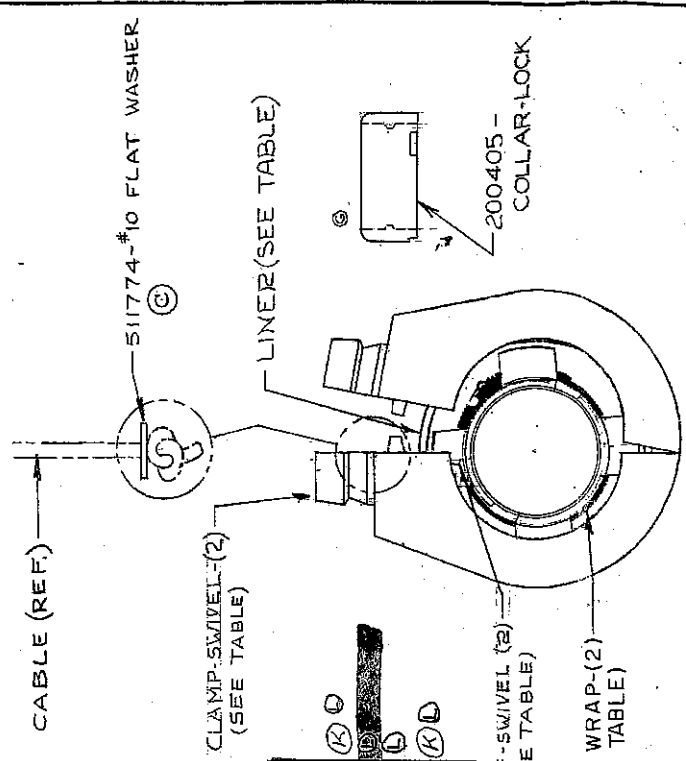


200033



TABLE

PART NO	CLAMP-HALF	TIE WRAP	LINER	CLAMP-SWIVEL	USAGE
1-200033	3-200032	916486	OMIT	38251	3/4" HOSE 1.062 DIA. TO 1.218 DIA.
2-200033	5-200032	916486	OMIT	38251	7/8" HOSE 1.061 DIA. TO 1.061 DIA.
3-200033	5-200032	916486	OMIT	2-38251	1" HOSE 1.317 DIA. TO 1.437 DIA.
4-200033	3-200032	916486	126802	38251	3/8" HOSE 1.000 DIA. TO 1.061 DIA.
5-200033	6-200032	916486	OMIT	3-38251	MSJ - HC

9/21

DresserWayne PETROLEUM EQUIPMENT DIVISION
DRESSER INDUSTRIES INC.
SALISBURY, MARYLAND 21801

DESIGNED BY: D.J.L. SCALE: 12"=1'-0"
 DRAWN BY: D.J.L. DATE: 5-17-65
 CHECKED BY: [Signature]
 APPROVED BY: [Signature]

TITLE: **ASSEMBLY - SWIVEL HOSE CLAMP**
 NUMBER: **200033**

ALL DIMENSIONS ARE THE PROPERTY OF DRESSER INDUSTRIES INC. IT IS NOT TO BE REPRODUCED OR Duplicated WITHOUT WRITTEN PERMISSION OF THE OWNER AND IS NOT TO BE USED FOR ANY OTHER PURPOSES WITHOUT THE WRITTEN PERMISSION OF DRESSER INDUSTRIES INC.

TOLERANCES -
 ON FRACTIONAL DIMENSIONS ± 0.01
 ON DECIMAL DIMENSIONS ± 0.05
 UNLESS OTHERWISE SPECIFIED

REMOVE BURRS AND BREAK SHARP EDGES

REVISIONS	DATE	BY	DESCRIPTION
L	8-27-91	JDD	916486 WAS 913331 OR 913665
K	5-9-85	JDD	ON 8-22-00033 CLAMP 913331 WAS 913330
CHANGE			

5/10

9/1