

## Technical Service Bulletin

To: NeXGen Service and Help Desk Personnel

From: Allied Electronics Technical Support

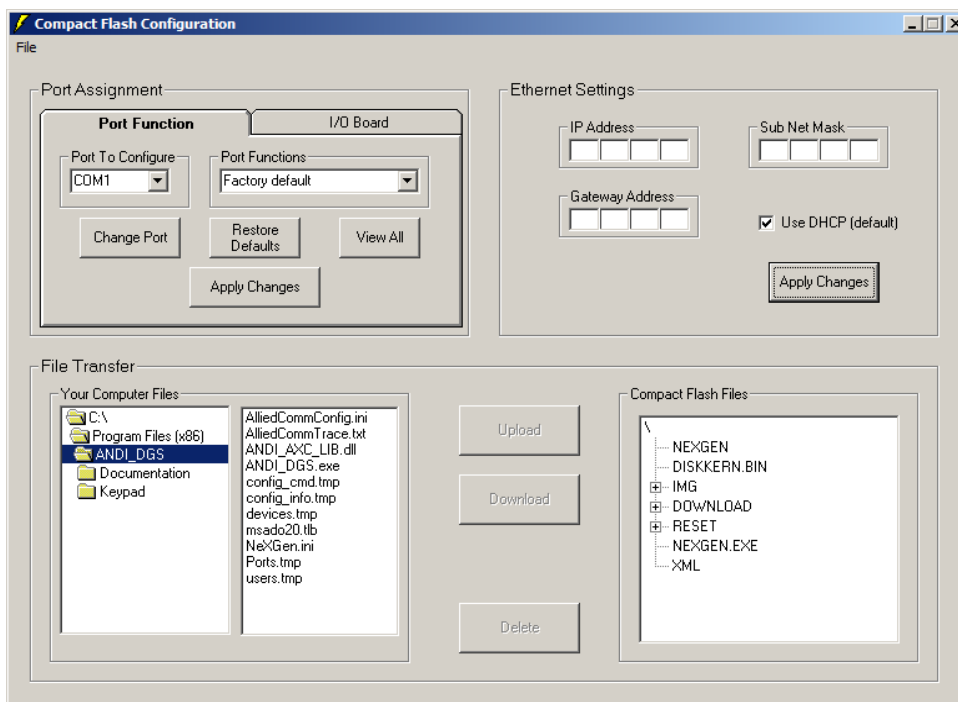
Date: March 15, 2012

Re: Loading Gilbarco Graphic Files to the NeXGen Controller\* via ANDI\_DGS

\* For the remainder of this document, the NeXGen controller will be referred to as **NXG**.

In order to properly and successfully load Gilbarco graphic files to NXG, the following steps are **REQUIRED**:

- 1) Launch ANDI\_DGS and connect to NXG via Ethernet. Note: *Loading graphics via the ANDI\_DGS application can **ONLY** be performed via Ethernet. This function is not supported when connected serially.*
- 2) Click on the **Utilities** tab
- 3) From the **Utilities** tab, click on the **CF Access** button under **Firmware Control**
- 4) When the **CF Access** box appears, refer to the *File Transfer* section in the lower left corner



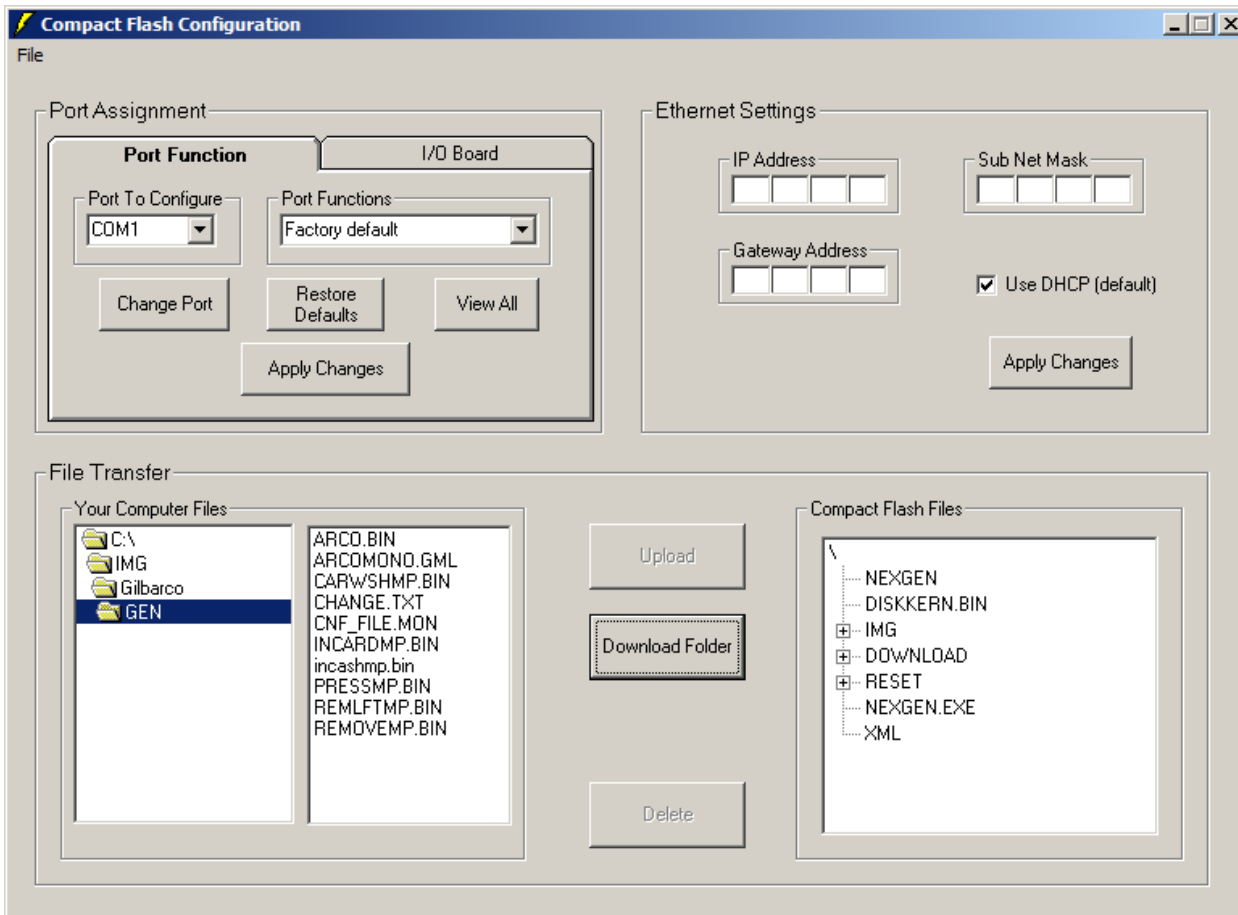
*Fueling the Future of Service Station Automation*

P.O. Box 624 • 2210 Farragut Avenue • Bristol, PA 19007 • 215.785.6200 • FAX 215.785.0230

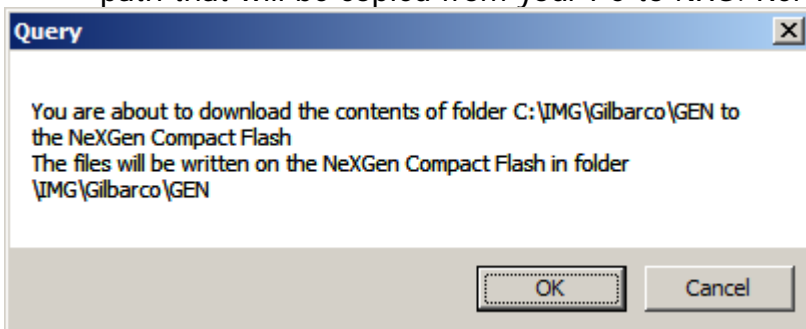
[www.AlliedElectronics.com](http://www.AlliedElectronics.com) • [Sales@AlliedElectronics.com](mailto:Sales@AlliedElectronics.com)

- 5) The **Your Computer Files** section on the left displays the folders on the root (C:\) of YOUR PC. The **Compact Flash Files** section on the right displays the contents of NXG's CF. Verify that the directory structure of **Your Computer Files** is EXACTLY how you wish it to appear in the IMG directory on the Compact Flash (CF).

**THIS IS CRITICAL!** You will be essentially copying files from the root of your machine onto the root of NXG. Refer to the following example of where the path is **\IMG\GILBARCO\GEN\** (Generic Gilbarco graphics):



- 6) Other examples of paths:
- a) **\IMG\GILBARCO\EXXON\**
  - b) **\IMG\GILBARCO\HUSKY\**
- 7) Click **Download Folder** and click **OK** when the **Query** box appears. The box will show the path that will be copied from your PC to NXG. Refer to the following example:



- 8) At this point, the new graphics are loaded into NXG and the Gilbarco CRINDs should begin re-loading shortly
- 9) If the graphics do not start loading on the Gilbarco CRINDs, disconnect the CAT 5 cable from port 7 on NXG
- 10) When the CRINDs display "Please Pay Inside" (about 40 seconds later), re-connect the CAT 5 cable into port 7
- 11) The Gilbarco CRINDs should start re-loading shortly

Contact Allied Electronics Technical Support with any questions or concerns:

800-223-3619

[SupportRequest@AlliedElectronics.com](mailto:SupportRequest@AlliedElectronics.com)