



## Technical Service Bulletin

**To: NeXGen Service and Help Desk Personnel**

**From: Allied Electronics Technical Support**

**Date: January 20, 2016**

**Re: ANDI\_DGS FpCfg File Builder**

The ANDI\_DGS utility provides a feature that will build an FpCfg.xml file.

While the use of the FpCfg.xml provides additional flexibility, manually creating the FpCfg.xml file can be time sensitive.

The FpCfg File Builder not only makes its creation efficient, but also makes the process less prone to user error, which is common when creating XML files.

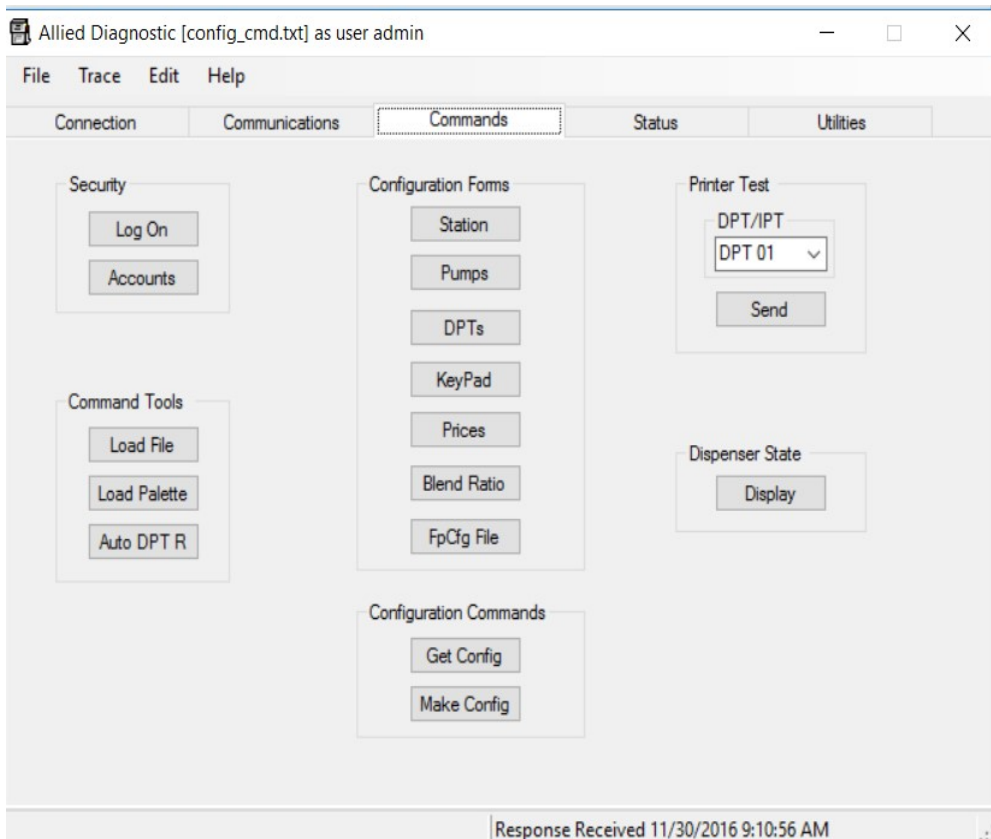
The following procedure assumes that the user has been trained on the ANDI\_DGS utility (aka DGS) and is using a minimum DGS version of 4.2.5.

- 1) Launch the DGS utility and connect to the NXG via Ethernet Communications Mode.
- 2) Go to the **Commands** tab.

***Superior Technology Now and Into the Future!***

P.O. Box 624 • 1414 Radcliffe Street Suite 120 • Bristol, PA 19007 • 215.785.6200 • FAX 215.785.0230

[www.AlliedElectronics.com](http://www.AlliedElectronics.com) • [Sales@AlliedElectronics.com](mailto:Sales@AlliedElectronics.com)

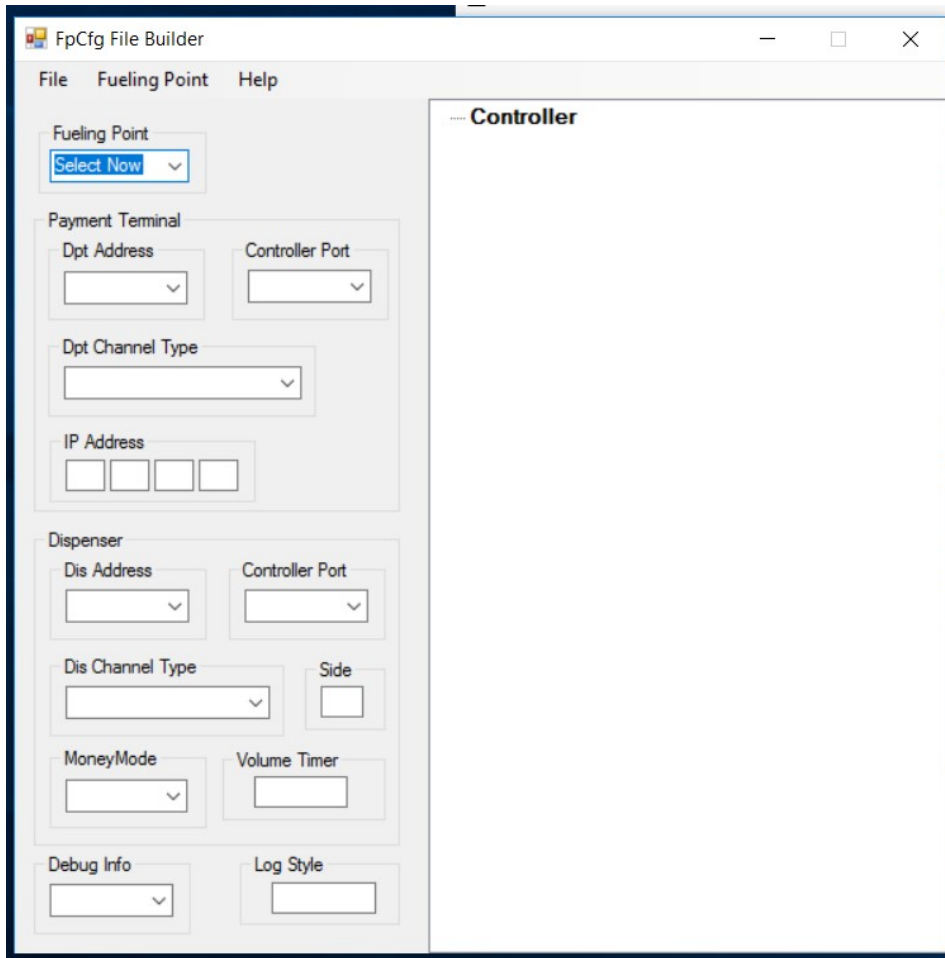


3) Under the "Configuration Forms" column, click "FpCfg File." The "FpCfg File Builder" form will appear.

***Superior Technology Now and Into the Future!***

P.O. Box 624 • 1414 Radcliffe Street Suite 120 • Bristol, PA 19007 • 215.785.6200 • FAX 215.785.0230

[www.AlliedElectronics.com](http://www.AlliedElectronics.com) • [Sales@AlliedElectronics.com](mailto:Sales@AlliedElectronics.com)

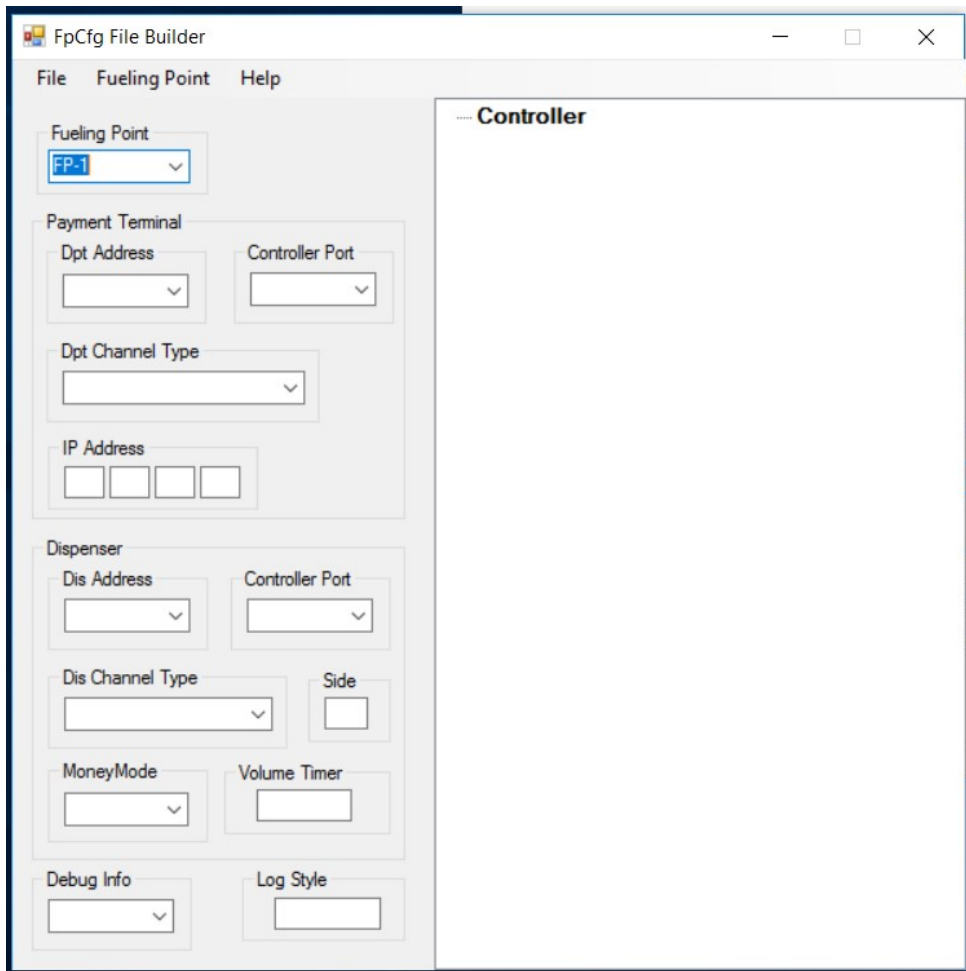


4) For purposes of this bulletin, we'll use Gilbarco as an example. Observe the highlighted text "Select Now" and click on the dropdown menu to the right. Select FP-1. FP-1 should appear in the *Fueling Point* box.

***Superior Technology Now and Into the Future!***

P.O. Box 624 • 1414 Radcliffe Street Suite 120 • Bristol, PA 19007 • 215.785.6200 • FAX 215.785.0230

[www.AlliedElectronics.com](http://www.AlliedElectronics.com) • [Sales@AlliedElectronics.com](mailto:Sales@AlliedElectronics.com)

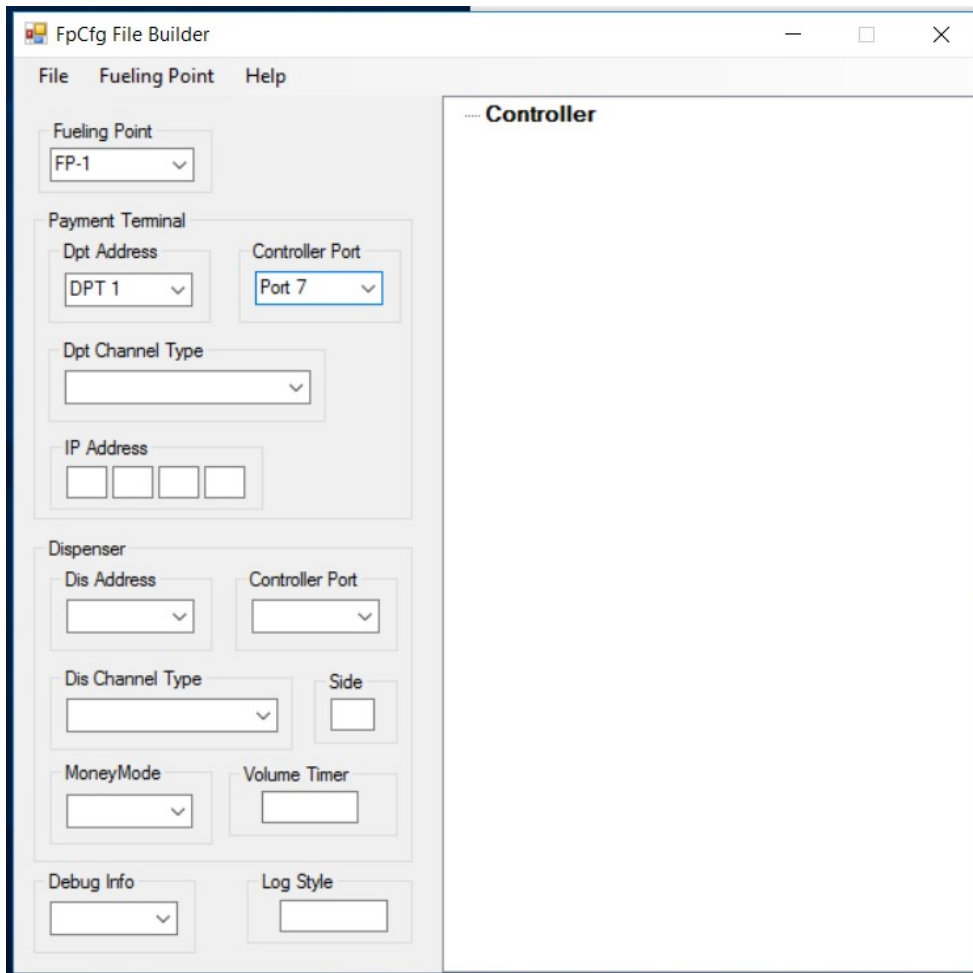


5) Under Payment Terminal, select the CRIND address from the "Dpt Address" dropdown menu and then select the assigned NXG CRIND port from the "Controller Port" dropdown menu. ***Note: For up to 32 CRINDs on a single loop, use a 1:1 correlation regardless of the actual physical address. For example, pump 1 will use DPT 1. Pump 17 will use DPT 17. Pump 32 will use DPT 32. The CRIND itself must still be physically addressed 1 behind the fueling point address.***

***Superior Technology Now and Into the Future!***

P.O. Box 624 • 1414 Radcliffe Street Suite 120 • Bristol, PA 19007 • 215.785.6200 • FAX 215.785.0230

[www.AlliedElectronics.com](http://www.AlliedElectronics.com) • [Sales@AlliedElectronics.com](mailto:Sales@AlliedElectronics.com)



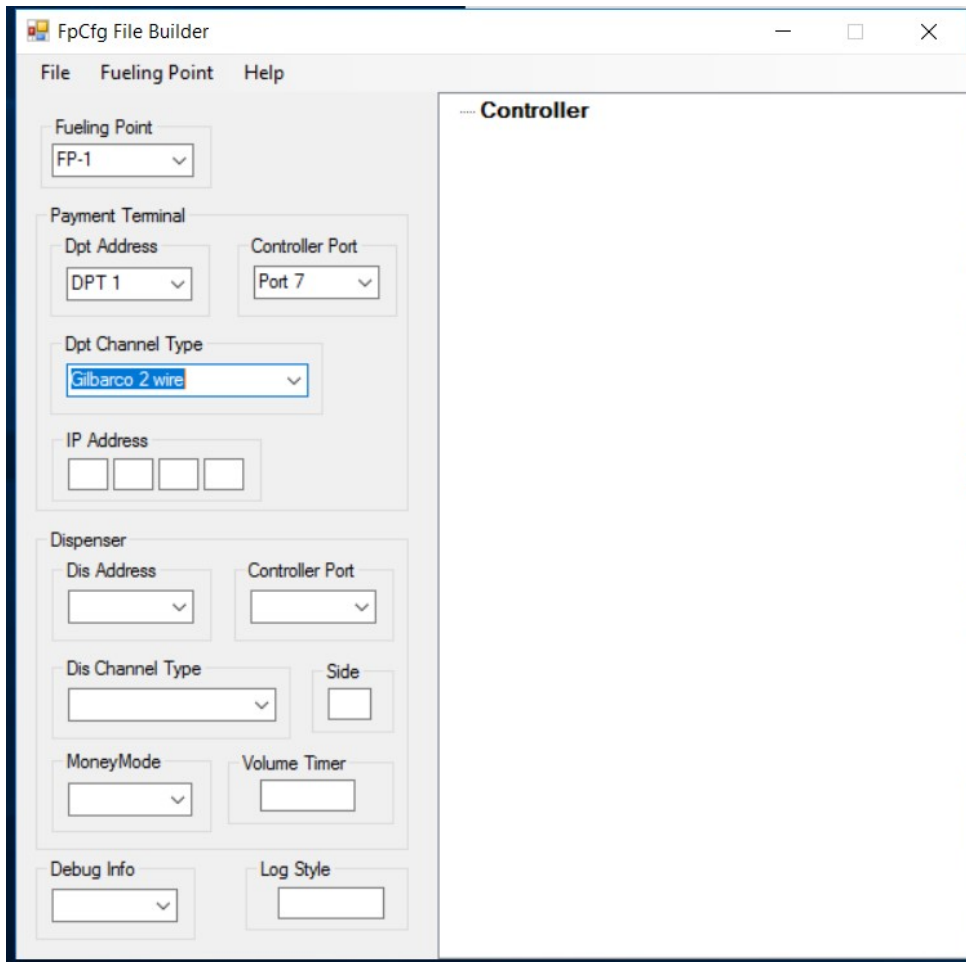
6) From the "Dpt Channel Type" dropdown menu, select the appropriate interface. For this example, Gilbarco CRINDs will use "Gilbarco 2 wire."

Because this is a serial 2-wire interface, you can leave the IP Address blank. In an EMV environment, the IP Address of the CRIND will need to be entered.

***Superior Technology Now and Into the Future!***

P.O. Box 624 • 1414 Radcliffe Street Suite 120 • Bristol, PA 19007 • 215.785.6200 • FAX 215.785.0230

[www.AlliedElectronics.com](http://www.AlliedElectronics.com) • [Sales@AlliedElectronics.com](mailto:Sales@AlliedElectronics.com)

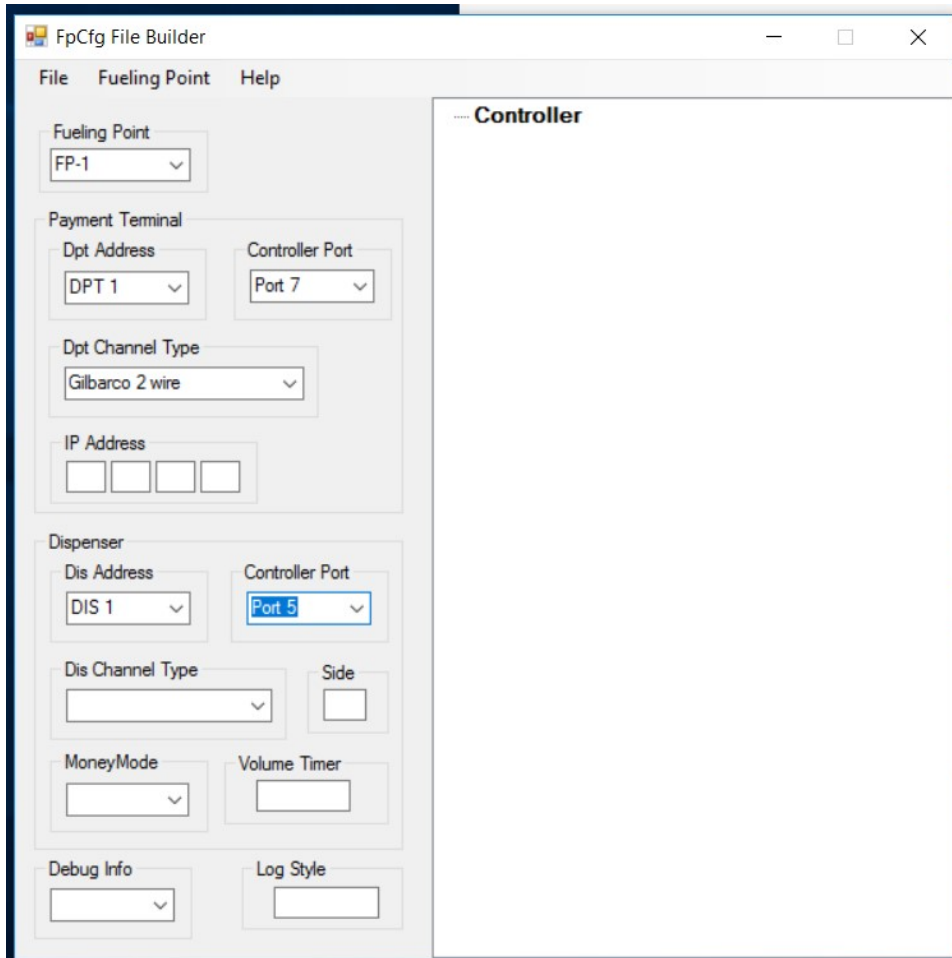


7) To configure the dispenser entry in the FpCfg.xml file, select the fueling point address from the "Dis Address" dropdown menu and then select the assigned NXG dispenser port from the "Controller Port" dropdown menu. ***Note: In the FpCfg.xml file, you must select the actual physical address of the pump. For example, if fueling point 17 has a physical address of 9, select '9' as the Dis Address.***

***Superior Technology Now and Into the Future!***

P.O. Box 624 • 1414 Radcliffe Street Suite 120 • Bristol, PA 19007 • 215.785.6200 • FAX 215.785.0230

[www.AlliedElectronics.com](http://www.AlliedElectronics.com) • [Sales@AlliedElectronics.com](mailto:Sales@AlliedElectronics.com)

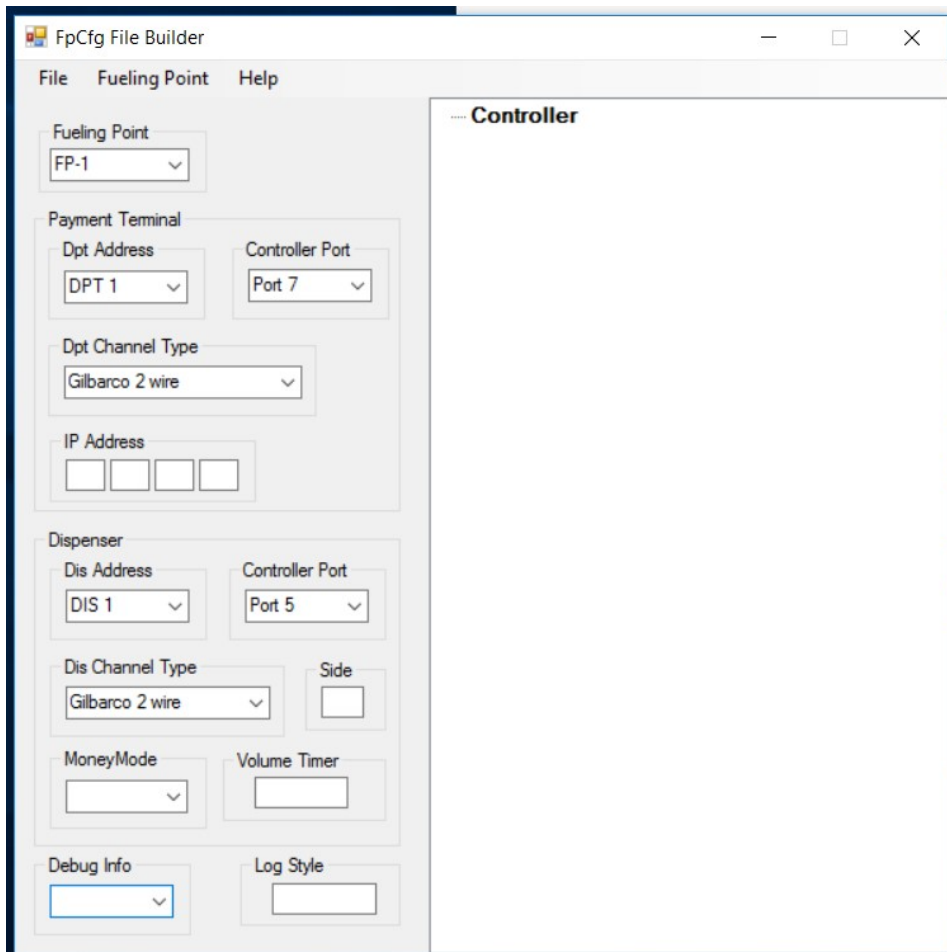


8) From the "Dis Channel Type" dropdown menu, select the appropriate interface. For this example, Gilbarco dispensers will use "Gilbarco 2 wire."

***Superior Technology Now and Into the Future!***

P.O. Box 624 • 1414 Radcliffe Street Suite 120 • Bristol, PA 19007 • 215.785.6200 • FAX 215.785.0230

[www.AlliedElectronics.com](http://www.AlliedElectronics.com) • [Sales@AlliedElectronics.com](mailto:Sales@AlliedElectronics.com)



9) The remaining settings are optional. Certain dispenser types (i.e. Gasboy) may require the Side A/B designation. Additional settings may be configured at the direction of Allied technical support.

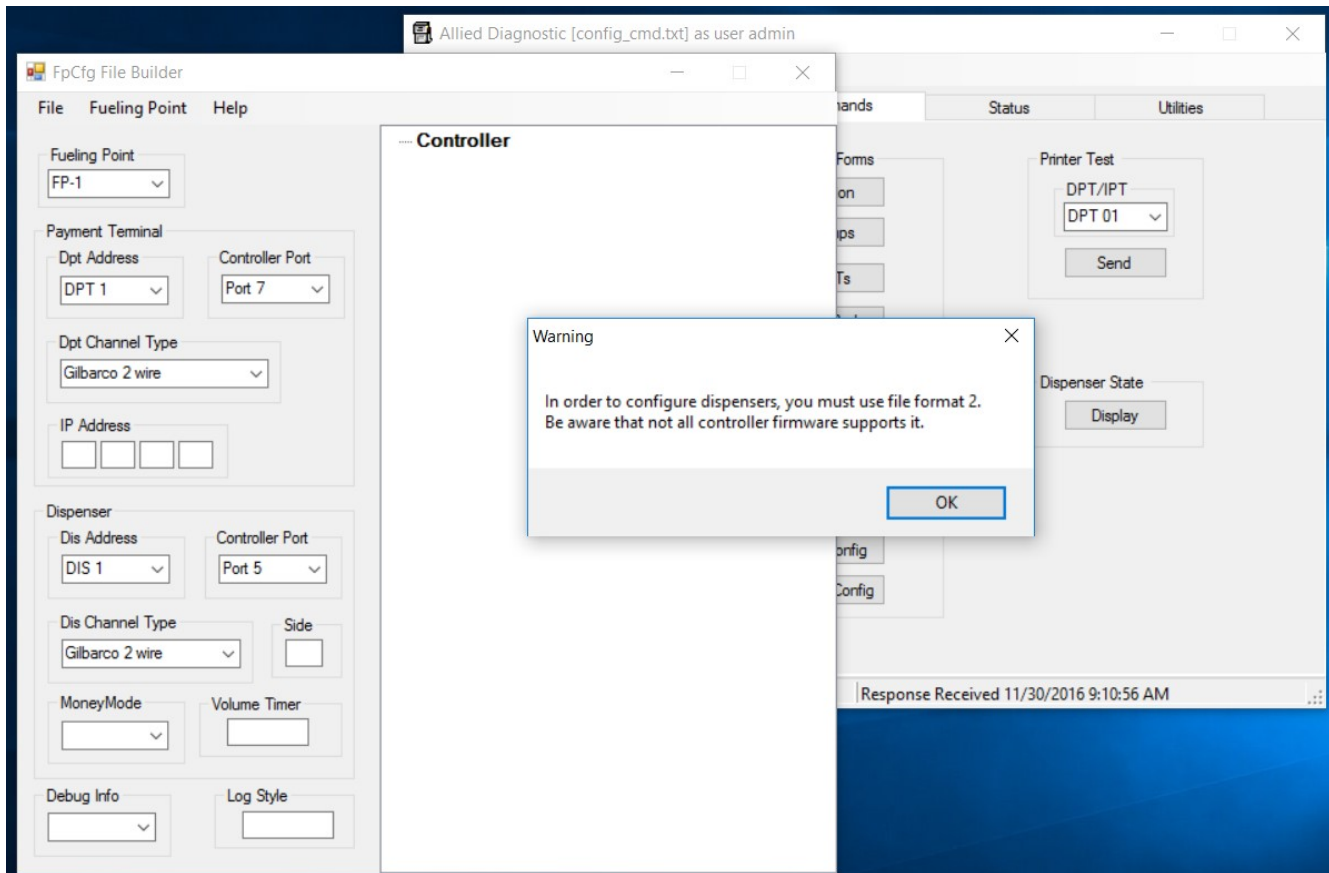
10) From the "Fueling Point" dropdown menu along the top of the screen, select "Add". A dialogue box will appear warning that you must use file format 2. This is the format for an FpCfg.xml that includes entries for fueling points as well as card readers.

***Superior Technology Now and Into the Future!***

P.O. Box 624 • 1414 Radcliffe Street Suite 120 • Bristol, PA 19007 • 215.785.6200 • FAX 215.785.0230

[www.AlliedElectronics.com](http://www.AlliedElectronics.com) • [Sales@AlliedElectronics.com](mailto:Sales@AlliedElectronics.com)



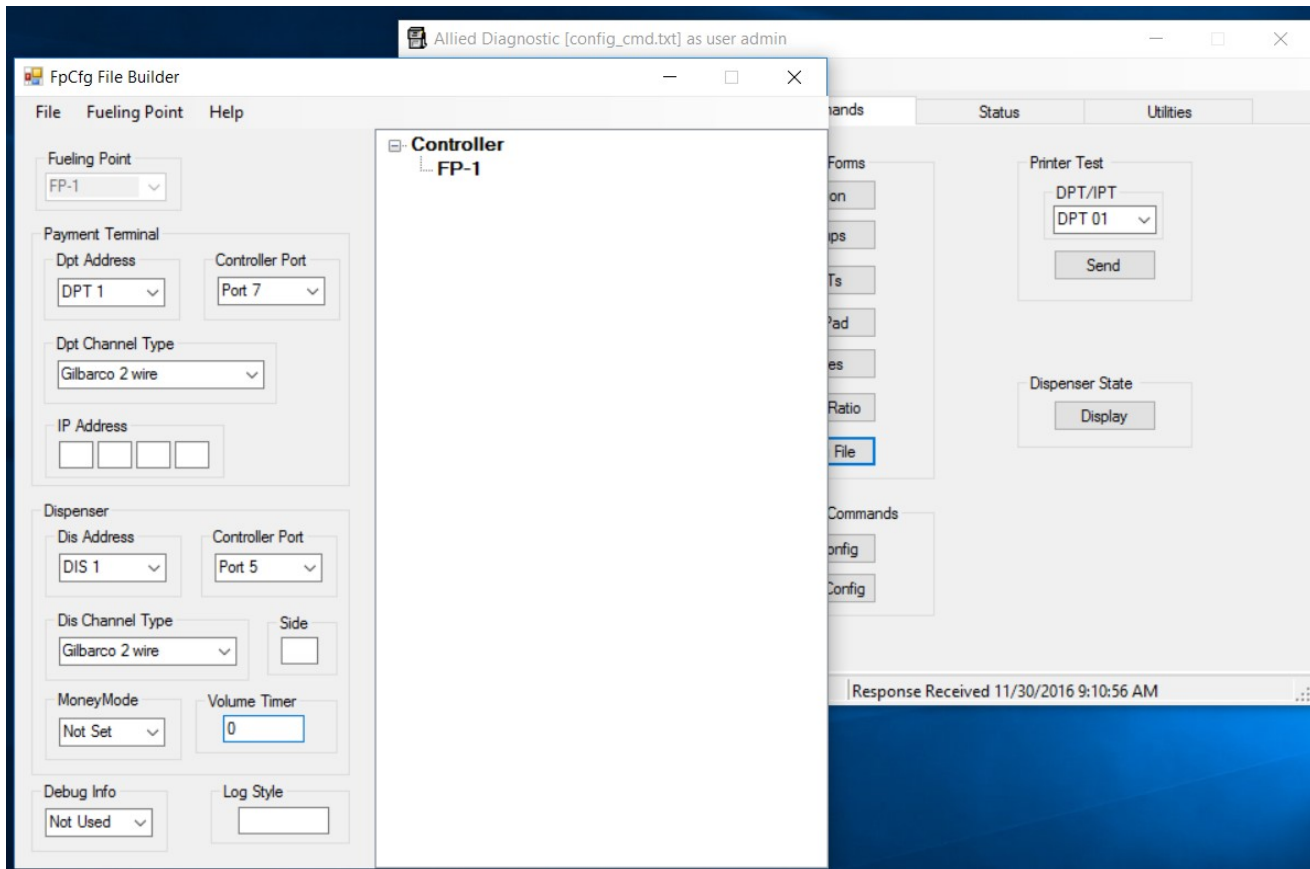


11) Click "OK" on the dialogue box and this will cause the entry for FP-1 to appear in the Controller window. You will also notice that the "Fueling Point" box is grayed out.

***Superior Technology Now and Into the Future!***

P.O. Box 624 • 1414 Radcliffe Street Suite 120 • Bristol, PA 19007 • 215.785.6200 • FAX 215.785.0230

[www.AlliedElectronics.com](http://www.AlliedElectronics.com) • [Sales@AlliedElectronics.com](mailto:Sales@AlliedElectronics.com)

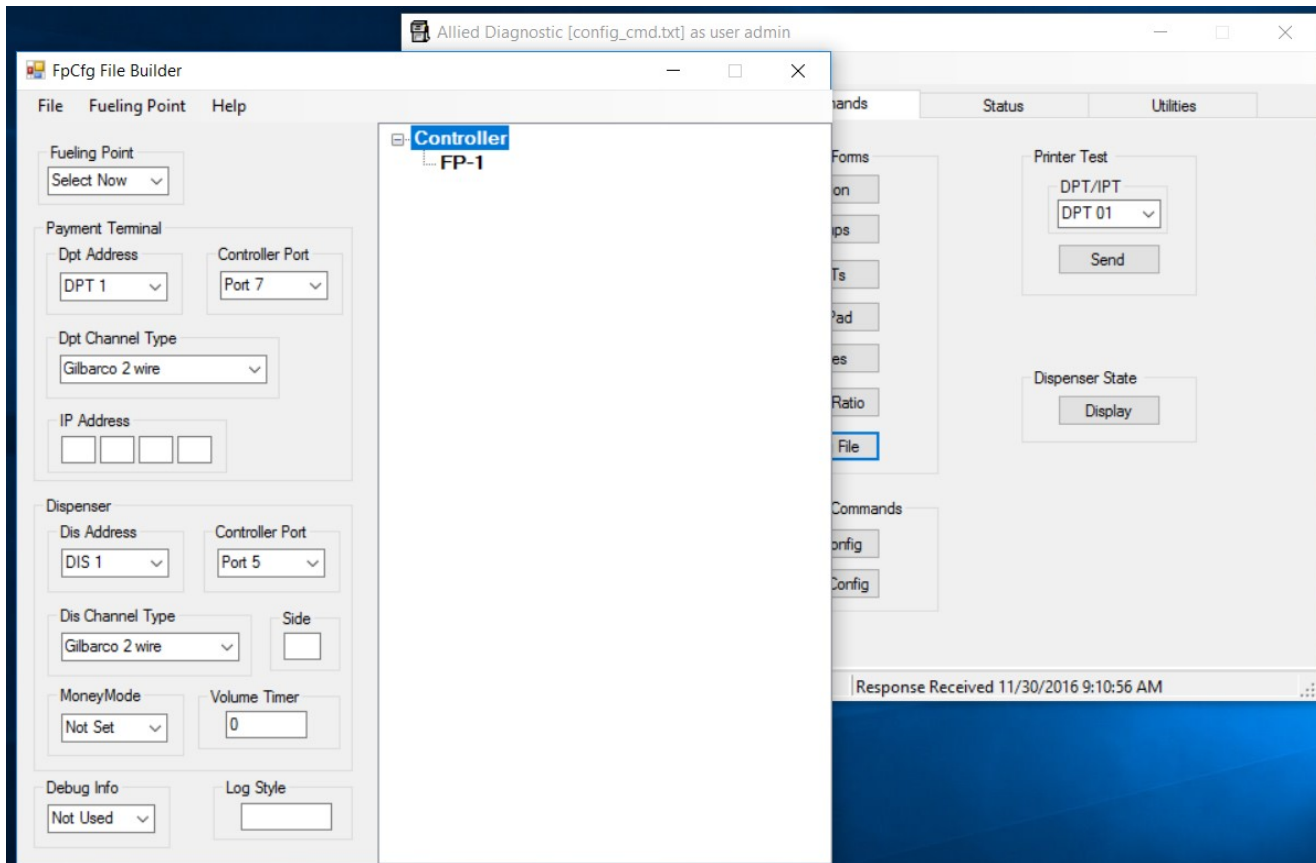


12) To add an entry for another fueling point, click on "Controller." You will notice that the "Fueling Point" box displays "Select Now". You are now ready to add another fueling point to the FpCfg.xml.

***Superior Technology Now and Into the Future!***

P.O. Box 624 • 1414 Radcliffe Street Suite 120 • Bristol, PA 19007 • 215.785.6200 • FAX 215.785.0230

[www.AlliedElectronics.com](http://www.AlliedElectronics.com) • [Sales@AlliedElectronics.com](mailto:Sales@AlliedElectronics.com)



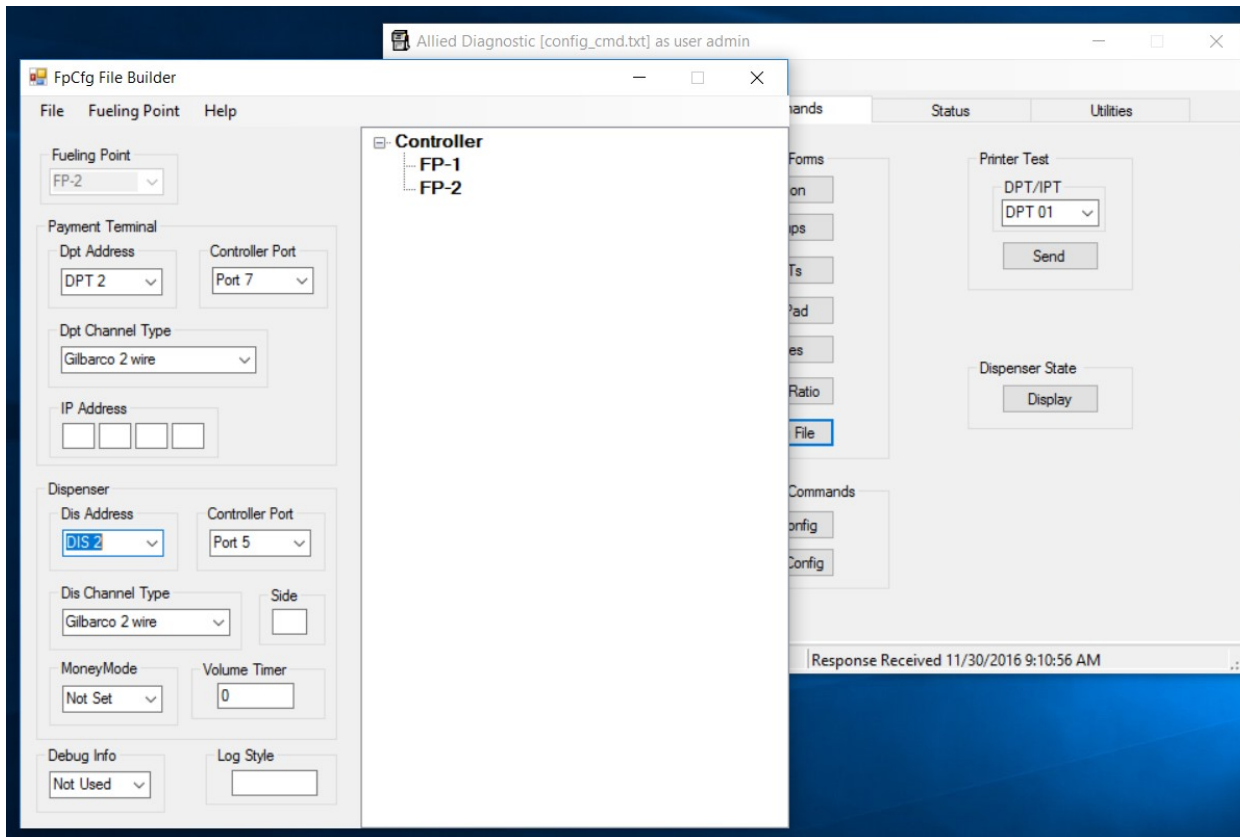
13) Observe the highlighted text "Select Now" and click on the dropdown menu to the right. Select FP-2. FP-2 should appear in the Fueling Point box.

14) Change the Payment Terminal and Dispenser fields accordingly and "Add" your new entry as described above.

***Superior Technology Now and Into the Future!***

P.O. Box 624 • 1414 Radcliffe Street Suite 120 • Bristol, PA 19007 • 215.785.6200 • FAX 215.785.0230

[www.AlliedElectronics.com](http://www.AlliedElectronics.com) • [Sales@AlliedElectronics.com](mailto:Sales@AlliedElectronics.com)



15) Continue adding your fueling points. When you are finished, go to the above dropdown menus and click *File->Save*. This will allow you to save your FpCfg.xml file anywhere you wish, but will default to the *C:\Program Files (x86)\Allied ANDI Diagnostic* folder.

The contents of your new FpCfg.xml file in the above example should look like this:

```
<FpCfg>
<Version>1</Version>
<Format>2</Format>
<FP Id="1">
  <DptChType>CH_TYPE_GIL_CRIND</DptChType>
  <DptPort>7</DptPort>
  <DptAddr>1</DptAddr>
  <DisChType>CH_TYPE_GIL_DIS</DisChType>
  <DisPort>5</DisPort>
  <DisAddr>1</DisAddr>
</FP>
<FP Id="2">
  <DptChType>CH_TYPE_GIL_CRIND</DptChType>
  <DptPort>7</DptPort>
  <DptAddr>2</DptAddr>
  <DisChType>CH_TYPE_GIL_DIS</DisChType>
  <DisPort>5</DisPort>
  <DisAddr>2</DisAddr>
</FP>
</FpCfg>
```

Contact Allied Electronics Technical Support with any questions or concerns:  
800-223-3619

[SupportRequest@AlliedElectronics.com](mailto:SupportRequest@AlliedElectronics.com)

***Superior Technology Now and Into the Future!***

P.O. Box 624 • 1414 Radcliffe Street Suite 120 • Bristol, PA 19007 • 215.785.6200 • FAX 215.785.0230

[www.AlliedElectronics.com](http://www.AlliedElectronics.com) • [Sales@AlliedElectronics.com](mailto:Sales@AlliedElectronics.com)