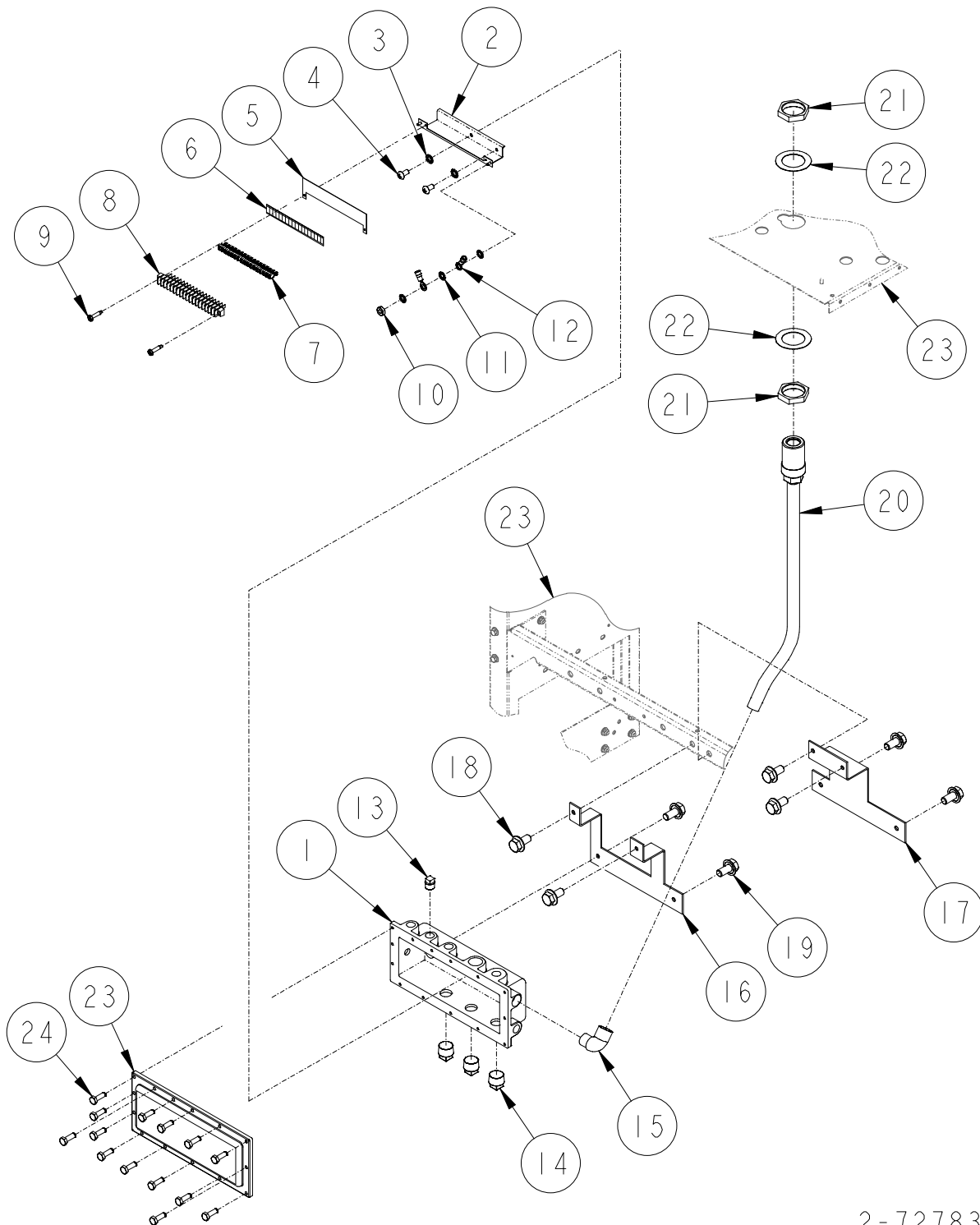


# CONNECTION BOX ASSEMBLY



2-72783

---

## CONNECTION BOX ASSEMBLY

---

ITEM NO.	PART NO.	DESCRIPTION
1	1-422650	Connection Box
2	233671-1	Terminal Strip Bracket Assembly
3	05-50761	#10 Shakeproof Lockwasher
4	248-50021	#10-24 x 3/8" Long Phillips Round Head Machine Screw
5	1-233708	Insulator
6	1-233709	Label
7	6-224492	Connector (14-16 AWG)
8	3-227938	Terminal Strip
9	15-53292	#6-32 x 5/8" Long Phillips Pan Head Thread Cutting Screw
10	04-50211	#8-32 Hex Machine Nut
11	04-50761	#8 Shakeproof Lockwasher
12	1-224494	#8 Wire Terminal (14-16 AWG)
13	04-51911	1/2" Pipe Plug
14	06-51901	1" Pipe Plug
15	1-232329	90° Short Conduit Elbow
16	1-321134	Connection Box Mounting Bracket (H411C, H411C-B3/5, H413C, H413C-REB, H422C, H422C-B3/5, H426C, H426C-EB)
17	1-321104	Connection Box Mounting Bracket (H414C, H424C-B3/4, H428C, H428C-EB)
18	02-54752	5/16-18 x 5/8" Long M-F Flange Whiz-Lock Screw
19	62-50361	3/8-16 x 5/8" Long Hex Head Cap Screw
20	<u>Connection Box Conduit &amp; Harness Assembly</u>	
	422652-5	All remote control models except H428C-REB
	422652-6	H428C-REB
	422652-7	All suction models except H428C-EB Suction
	422652-8	H428C-EB Suction
21	1-132706	1-1/2 Hex Lock Nut
22	1-132705	Conduit Washer
23	1-422651	Connection Box Cover
24	03-50361	1/4-20 x 3/4" Long Hex Head Cap Screw
25	<u>For parts call out of Chassis Assembly see:</u>	
	72779	H300C Series
	72724	H400C Series

Reference for Tokheim internal use only:

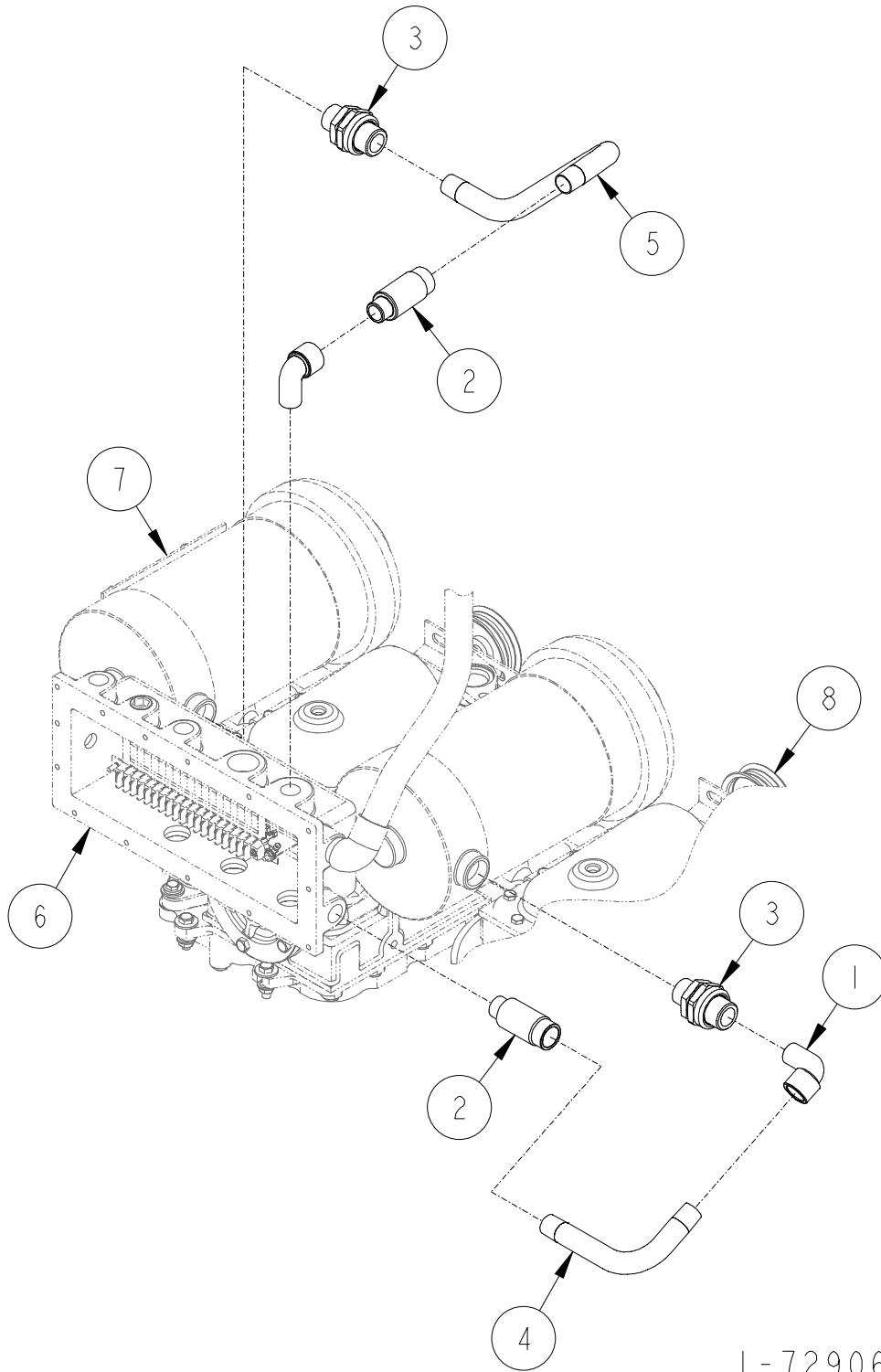
321153 45" Chassis Assembly

321204 30" Chassis Assembly



# CONNECTION BOX ASSEMBLY

## 30" SUCTION SYSTEM



1-72906

---

## CONNECTION BOX ASSEMBLY

### 30" SUCTION SYSTEM

---

ITEM NO.	PART NO.	DESCRIPTION
1	1-128035	1/2 x 90° Conduit Street Elbow
2	1-218941	1/2 Expansion Union Male/Female
3	1-233735	1/2 Union Male/Female
4	2-321110	Motor Conduit
5	1-321288	Motor Conduit
6	<u>For parts call out of Connection Box Assembly see 72783.</u>	
7	<u>For parts call out of Motor Assembly see 72894.</u>	
8	<u>For parts call out of Rotary Pump Assembly see 72896.</u>	

Reference for Tokheim internal use only:

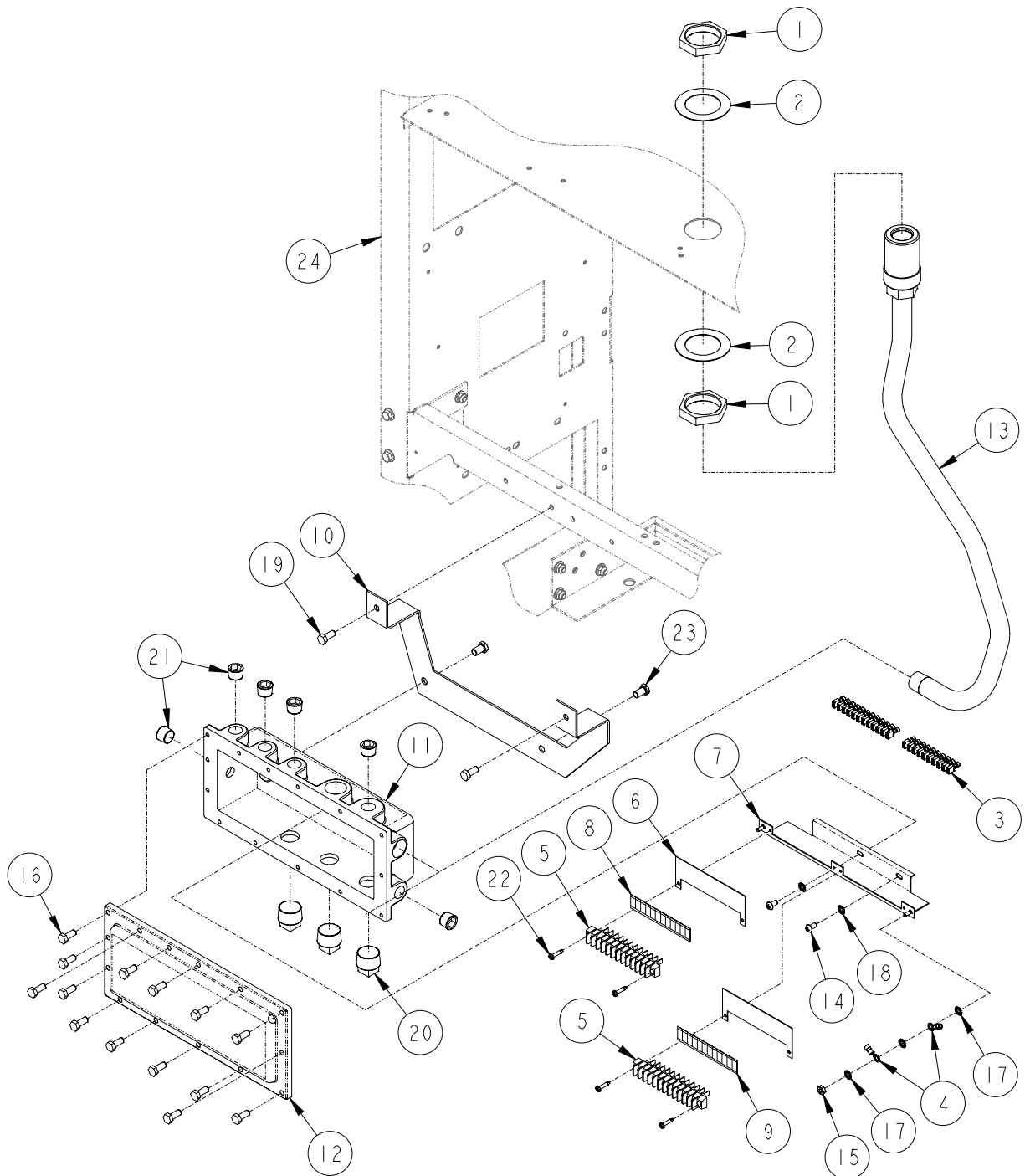
321204      30" Chassis Assembly

1-72906



# CONNECTION BOX ASSEMBLY

## H300C-RHV MASTER SERIES



1-72917

## CONNECTION BOX ASSEMBLY H300C-RHV MASTER SERIES

ITEM NO.	PART NO.	DESCRIPTION
1	1-132706	1-1/2 Hex Lock Nut
2	1-132735	Conduit Washer
3	6-224492	Connector (14-16 AWG)
4	1-224494	#8 Wire Terminal (14-16 AWG)
5	4-227938	Terminal Strip
6	2-233708	Insulator
7	233777-1	Terminal Strip Bracket Assembly
8	1-233785	Label
9	2-233785	Label
10	1-321402	Connection Box Mounting Bracket
11	1-422650	Connection Box
12	1-422651	Connection Box Cover
13	422907-4	Connection Box Conduit & Harness Assembly
14	248-50021	#10-24 x 3/8" Long Phillips Round Head Machine Screw
15	04-50211	#8-32 Hex Machine Nut
16	03-50361	1/4-20 x 3/4" Long Hex Head Cap Screw
17	04-50761	#8 Shakeproof Lockwasher
18	05-50761	#10 Shakeproof Lockwasher
19	20-51491	5/16-18 x 5/8" Long Self Tapping Screw
20	06-51901	1" Pipe Plug
21	54-51911	1/2" Pipe Plug
22	15-53292	#6-32 x 5/8" Long Phillips Pan Head Thread Cutting Screw
23	35-55132	5/16-18 x 5/8" Long M-F Flange Whiz-Lock Screw
24	<u>For parts call out of Chassis Assembly see 72779.</u>	

Reference for Tokheim internal use only:

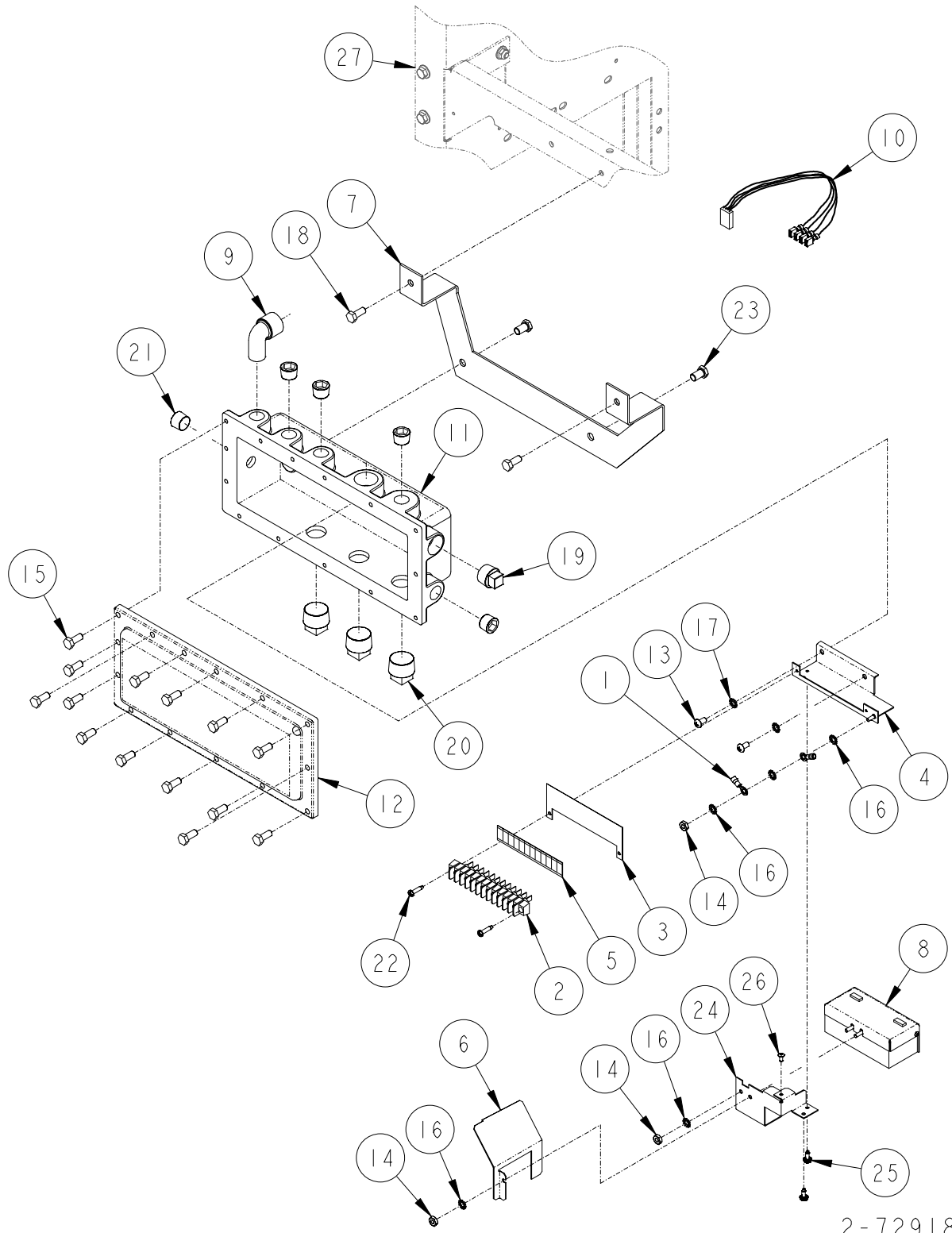
321435      30" High Volume Chassis Assembly

1-72917



# CONNECTION BOX ASSEMBLY

## H300C-RHV SATELLITE SERIES



2-72918

## CONNECTION BOX ASSEMBLY H300C-RHV SATELLITE SERIES

ITEM NO.	PART NO.	DESCRIPTION
1	1-224494	#8 Wire Terminal (14-16 AWG)
2	4-227938	Terminal Strip
3	2-233708	Insulator
4	233779-1	Terminal Strip Bracket Assembly
5	2-233785	Label
6	1-233798	ISB Box Divider
7	1-321402	Connection Box Mounting Bracket
8	321405-1	ISB Assembly
9	321433-1	IS Handle Harness Assembly
10	321434-1	Connection Box Handle Harness Assembly
11	1-422650	Connection Box
12	1-422651	Connection Box Cover
13	248-50021	#10-24 x 3/8" Long Phillips Round Head Machine Screw
14	04-50211	#8-32 Hex Machine Nut
15	03-50361	1/4-20 x 3/4" Long Hex Head Cap Screw
16	04-50761	#8 Shakeproof Lockwasher
17	05-50761	#10 Shakeproof Lockwasher
18	20-51491	5/16-18 x 5/8" Long Self Tapping Screw
19	05-51911	3/4" Pipe Plug
20	06-51901	1" Pipe Plug
21	54-51911	1/2" Pipe Plug
22	15-53292	#6-32 x 5/8" Long Phillips Pan Head Thread Cutting Screw
23	35-55132	5/16-18 x 5/8" Long M-F Flange Whiz-Lock Screw
24	1-321500	I.S. Support Bracket
25	21-55392	#6 x 3/8" Long Hex Head Self Tapping Screw
26	1-128281	Pop Rivet
27	<u>For parts call out of Chassis Assembly see 72779.</u>	

Reference for Tokheim internal use only:

321435      30" High Volume Chassis Assembly

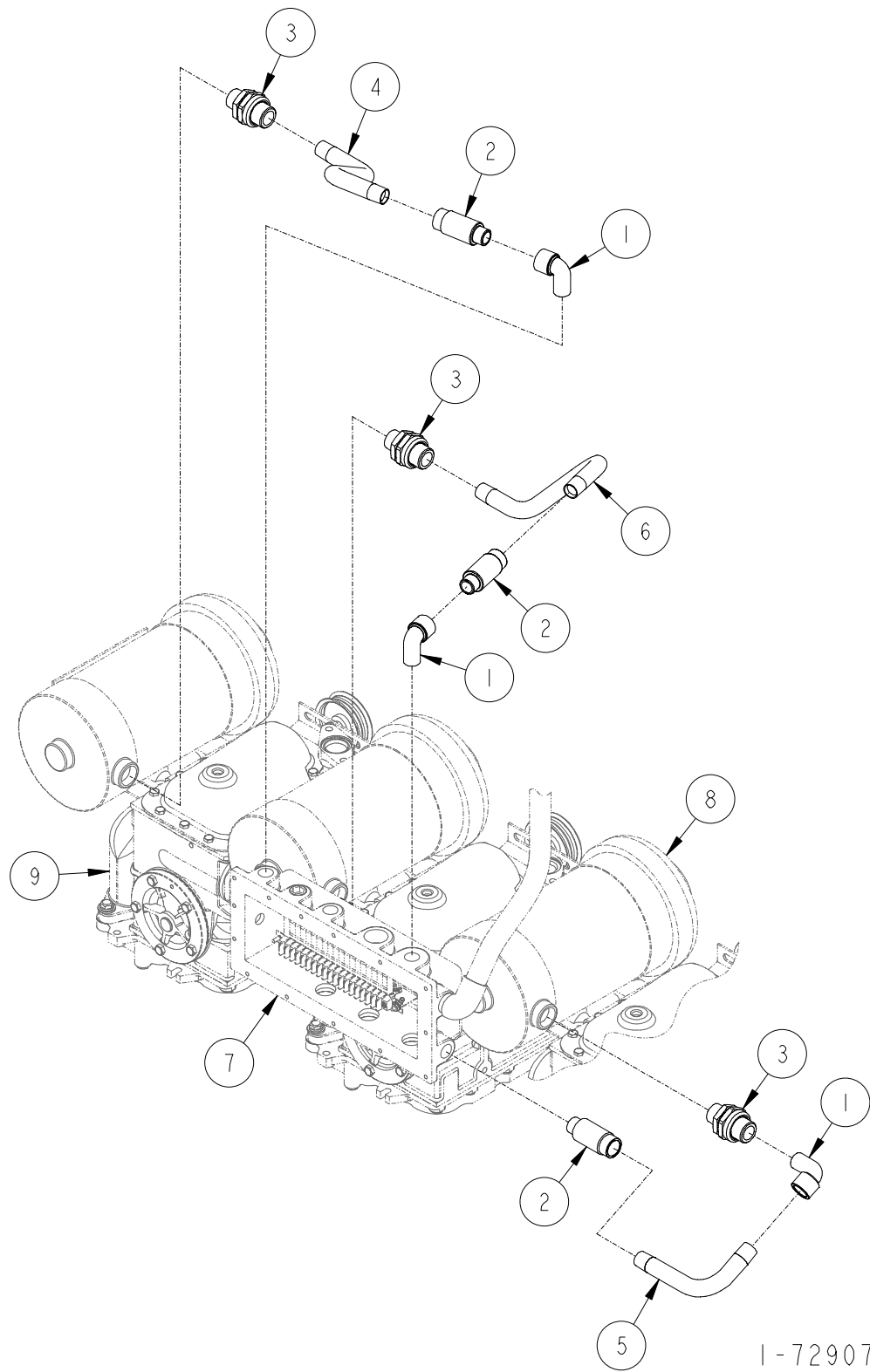
2-72918





# CONNECTION BOX ASSEMBLY

## 45" SUCTION SYSTEM



1-72907

---

---

**CONNECTION BOX ASSEMBLY**  
**45" SUCTION SYSTEM**

---

ITEM NO.	PART NO.	DESCRIPTION
1	1-128035	1/2 x 90° Conduit Street Elbow
2	1-218941	1/2 Expansion Union Male/Female
3	1-233735	1/2 Union Male/Female
4	1-321108	Motor Conduit
5	1-321110	Motor Conduit
6	1-321328	Motor Conduit
7		<u>For parts call out of Connection Box Assembly see 72783.</u>
8		<u>For parts call out of Motor Assembly see 72895.</u>
9		<u>For parts call out of Rotary Pump Assembly see 72896.</u>

Reference for Tokheim internal use only:  
321153      45" Chassis Assembly

1-72907

