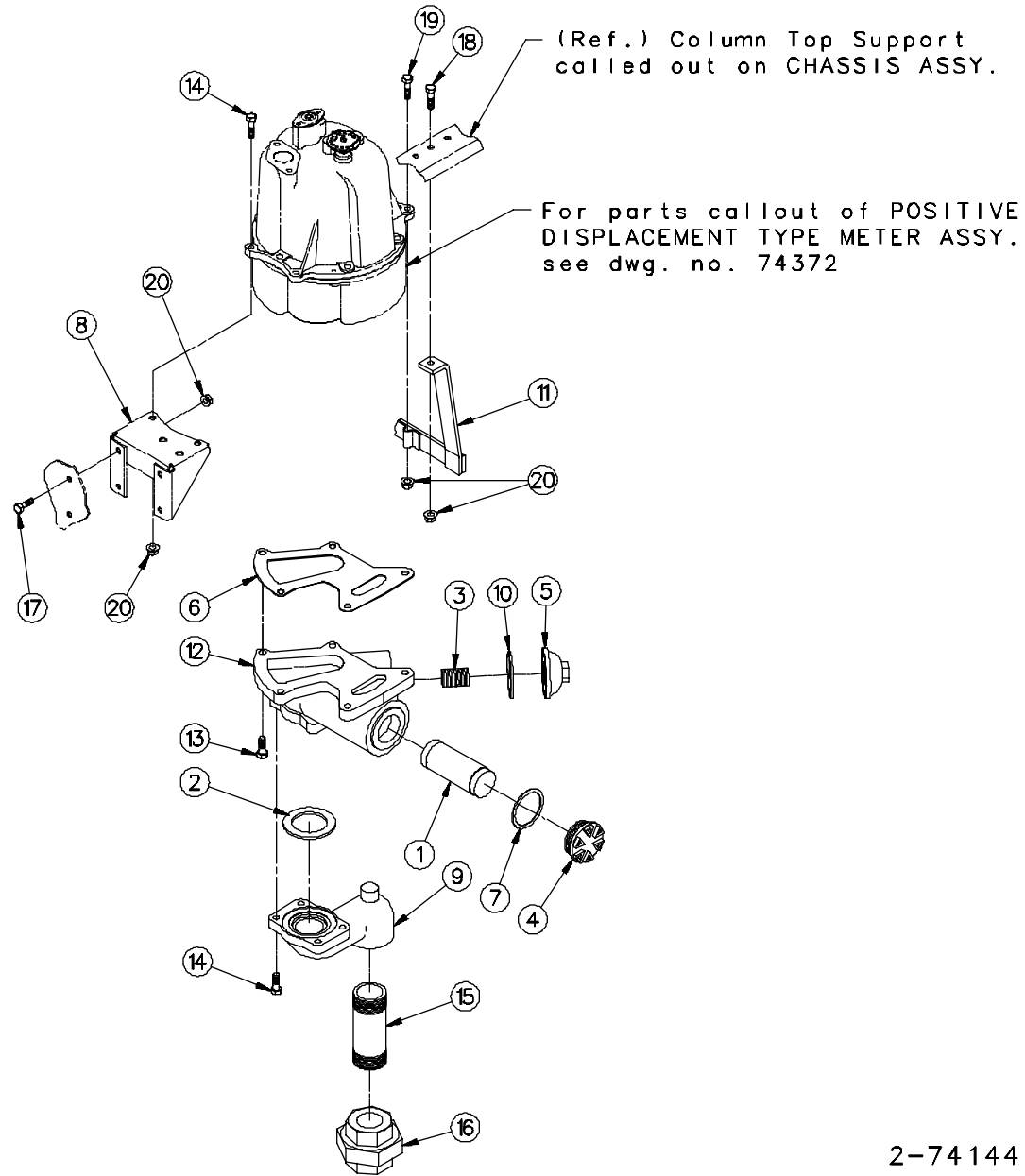


# Section Nine

## Remote Systems

	Page Number	2 6 2 A D I S P E N S E R
<i>Remote Control System for 262A-RC .....</i>	9-2, 9-3	
<i>Remote Control System for 262A-1 &amp; 2-RC-TW</i>	9-4, 9-5	
<i>Satellite Discharge Stub Assembly .....</i>	9-6, 9-7	

# REMOTE CONTROL SYSTEM FOR 262A-RC

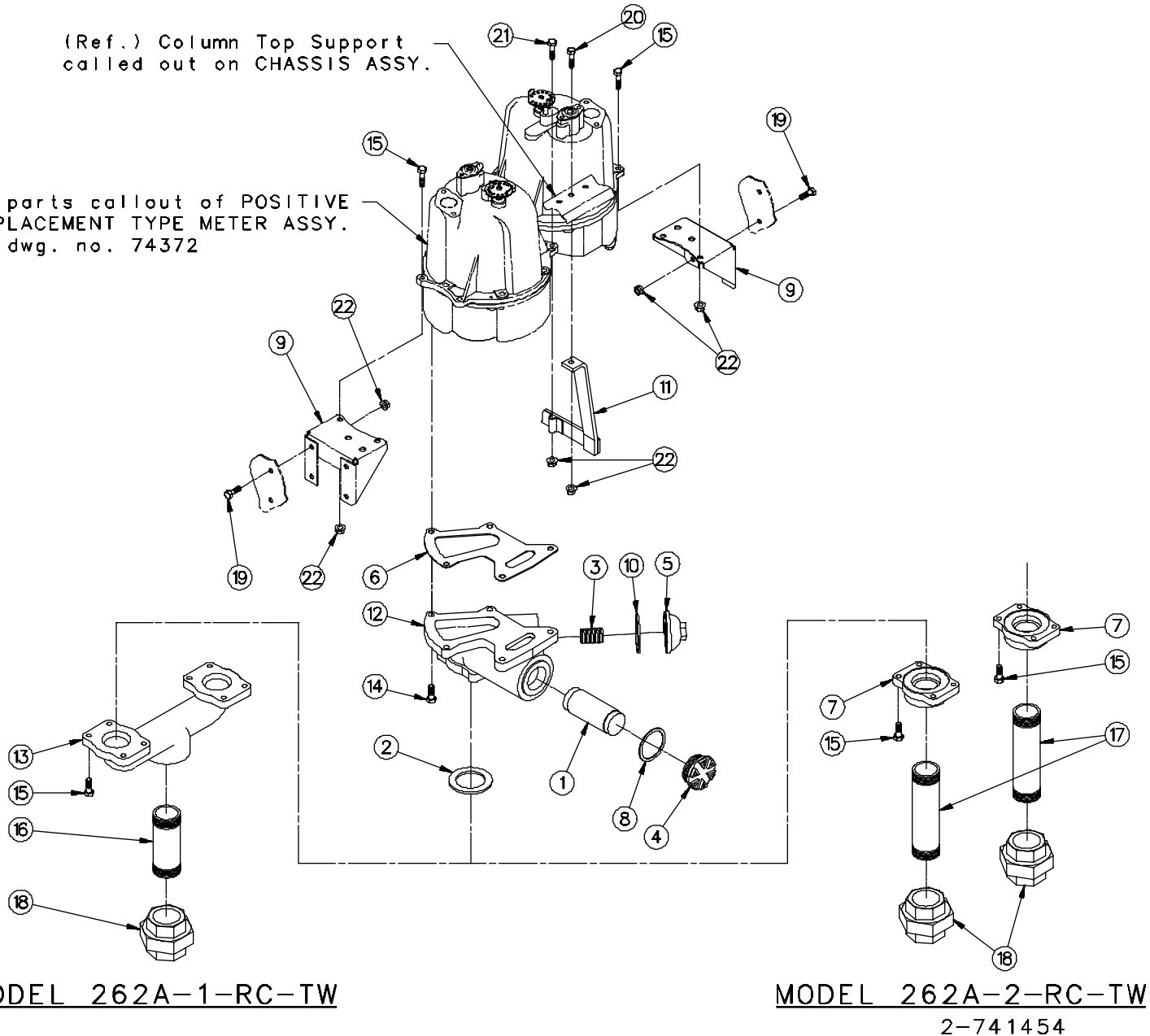




## REMOTE CONTROL SYSTEM FOR 262A-1 & 2-RC-TW

(Ref.) Column Top Support  
called out on CHASSIS ASSY.

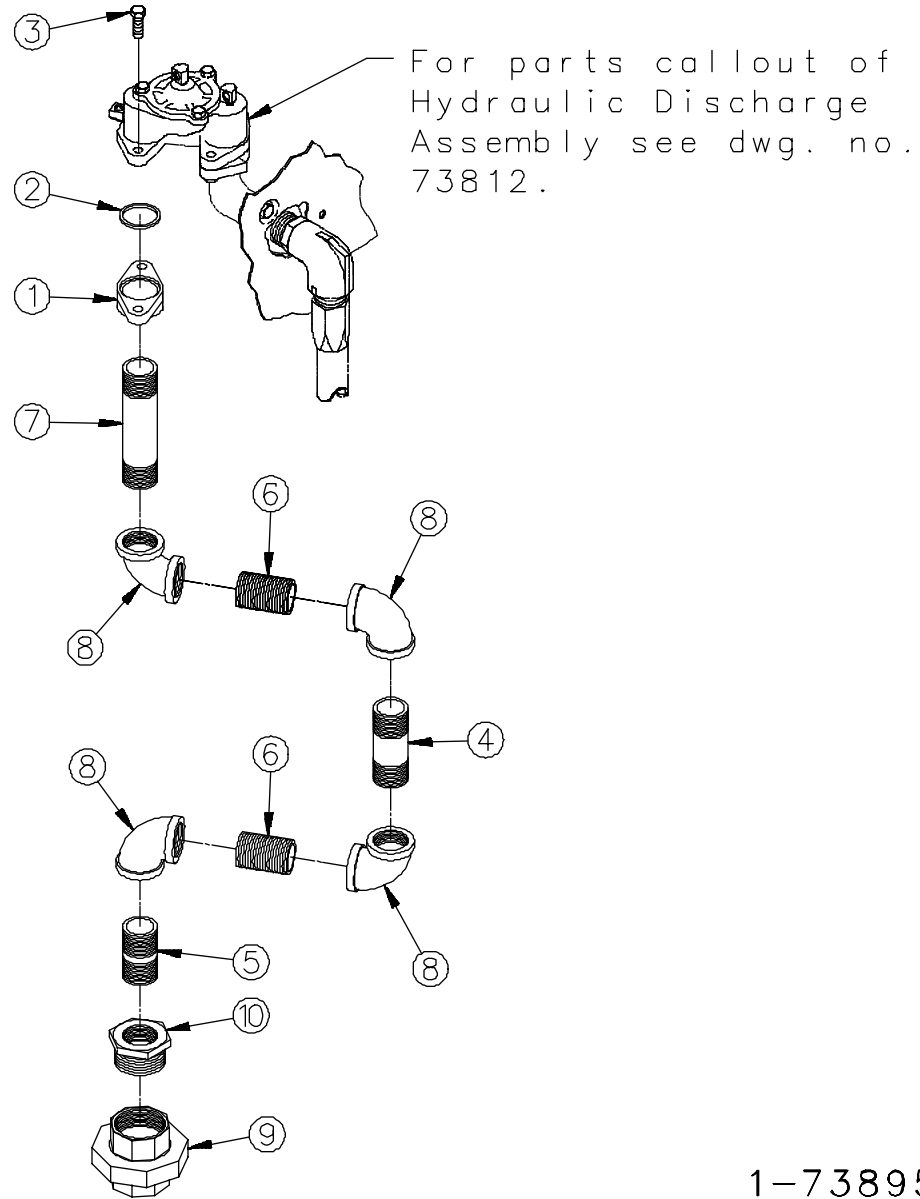
For parts callout of POSITIVE  
DISPLACEMENT TYPE METER ASSY.  
see dwg. no. 74372





# SATELLITE DISCHARGE STUB ASSEMBLY

(262AFL-M-1-RC-TW)



1-73895

1-73895

1 of 1

## SATELLITE DISCHARGE STUB ASSEMBLY

<u>Item</u>	<u>Part No.</u>	<u>Description</u>
1	1-220923	Meter Flange
2	13-313235	Gasket
3	35-50361	5/16-18 x 1" Long Hex Head Cap Screw
4	76-50510	1" x 4-1/4" Long Pipe
5	<u>Pipe 1" x</u> 316-50510	2-1/4" Long (Used with 07-51780)
	86-50560	2" Long (Used with 27-51780)
6	86-50560	1" x 2" Long Pipe Nipple
7	95-50560	1" x 7" Long Pipe Nipple
8	06-51700	1" 90° Elbow
9	<u>1-1/2" Female Union</u> 07-51780	150#
	27-51780	250#
10	22-51851	1-1/2" x 1" Hex Bushing

**For complete Satellite Discharge Stub  
Assembly order:  
420756-1**

---

1-73895