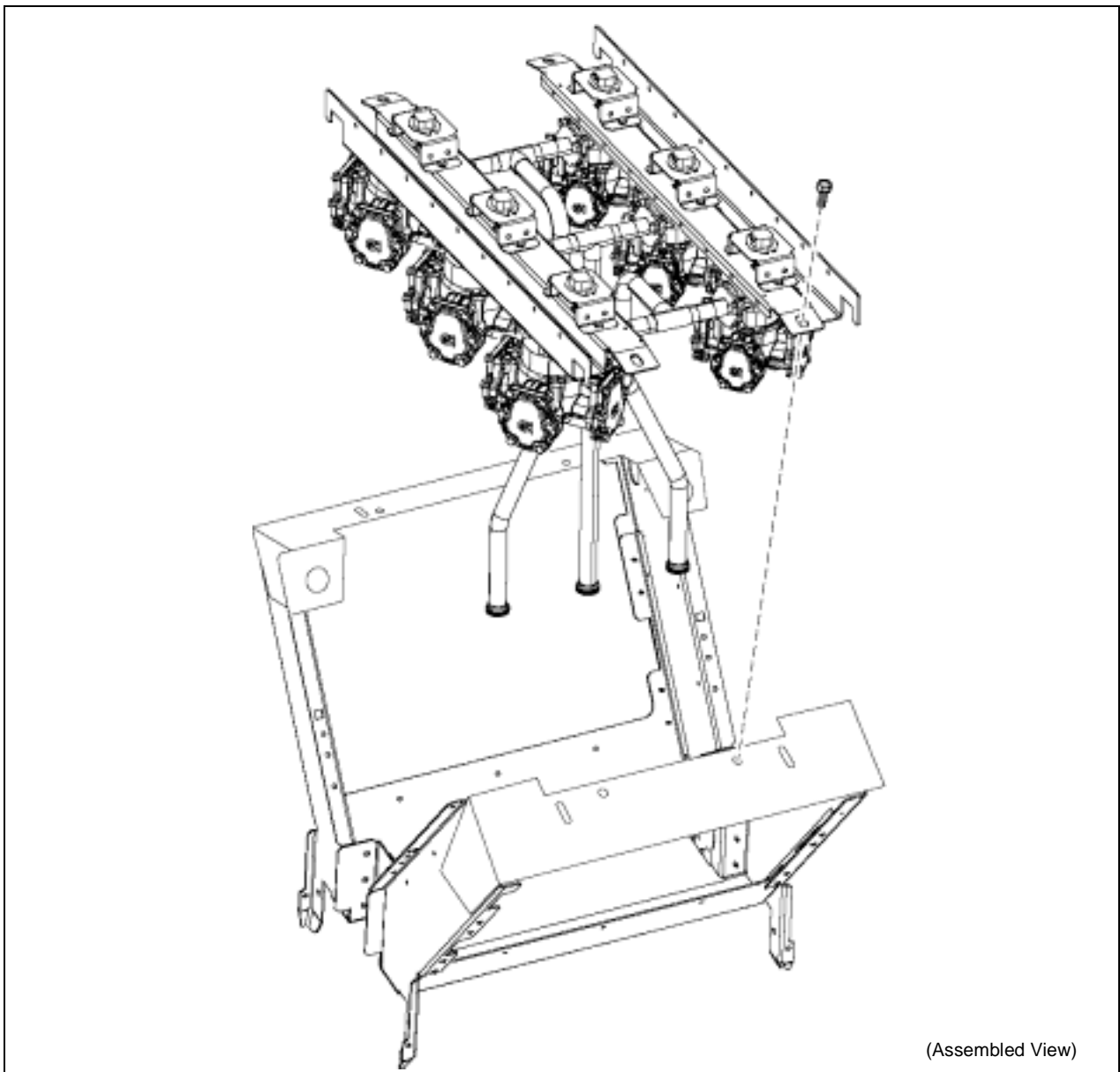


8 – Hydraulics Section

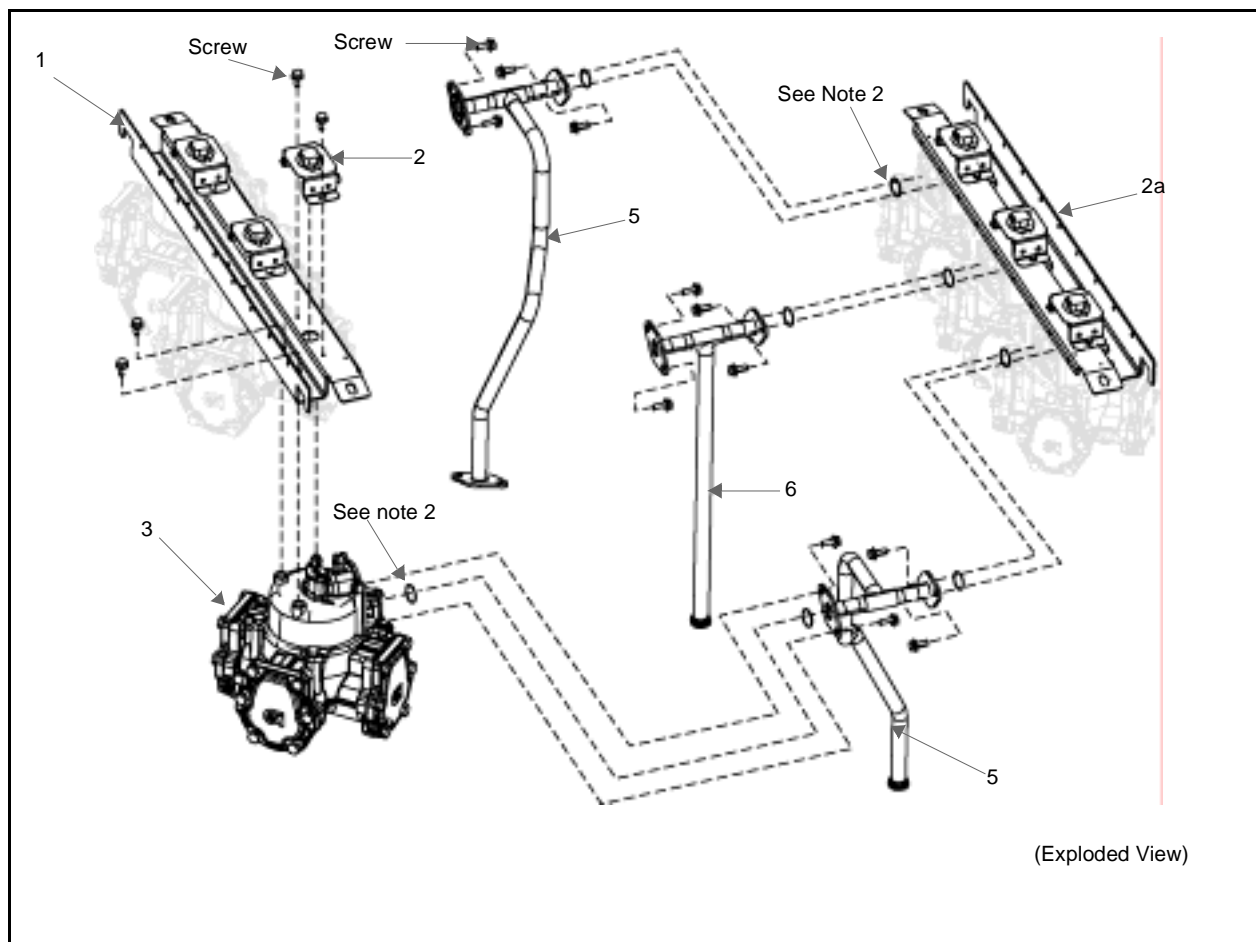
Upper Hydraulics

C+ Meter Rail Assembly



Note: See page 8-2 C+ Meter Rail Assembly to see illustrated parts list.

C+ Meter Rail Assembly

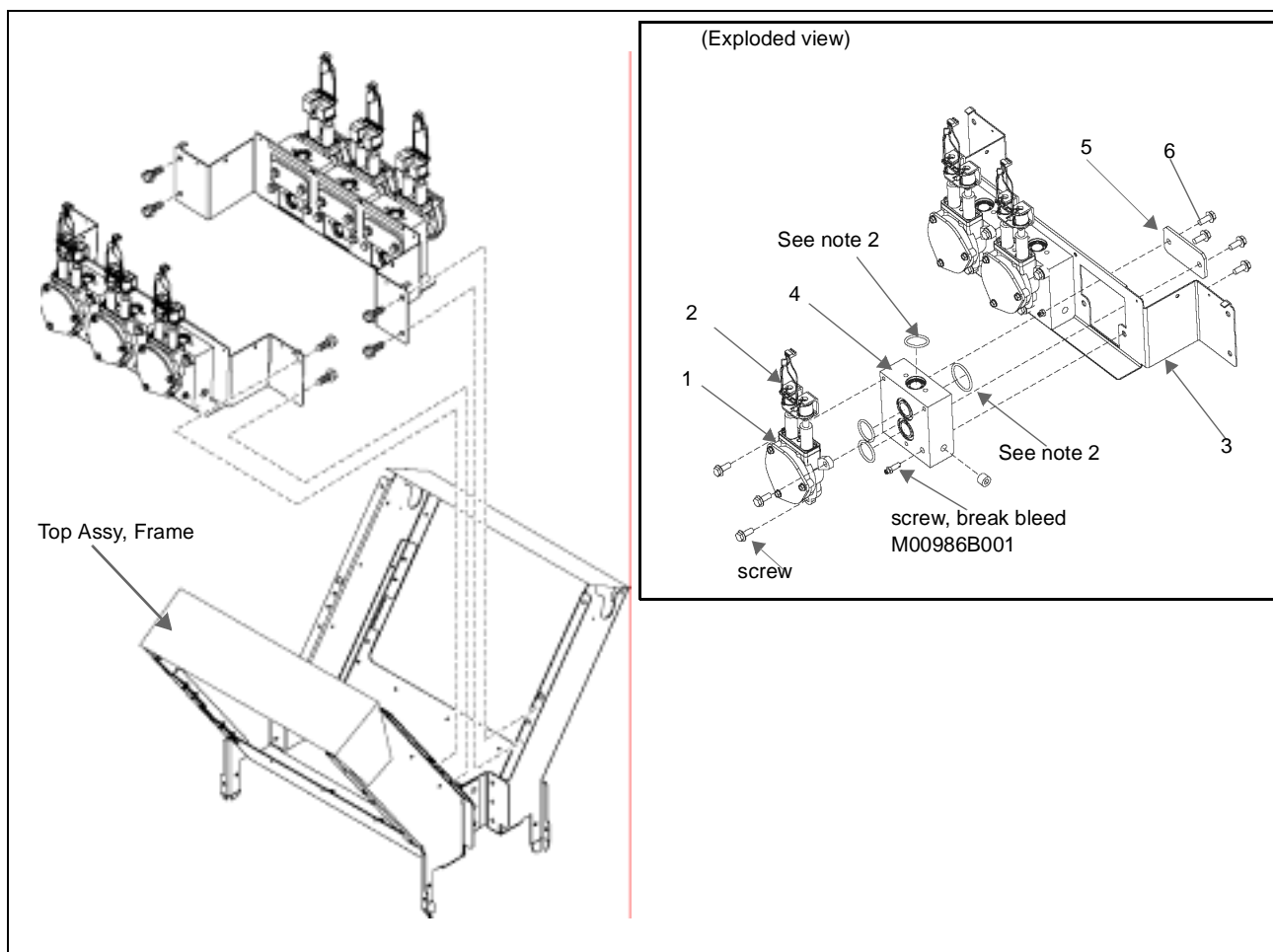


Item #	Description	Current Part	Previous Part	Quantity
1	C+ Meter Support Bracket (See Note 1)	M00905B001	-	2
2	Pulser Mounting Bracket	M00139B001	-	1 per meter
2a	<ul style="list-style-type: none"> Pulser assembly cable (See Note 1) (See Cable Section for description and details) 	M03239B001	M00453A001	2 pulsers per assembly
	<ul style="list-style-type: none"> Screw, metric thd 	-	-	2 per pulser bracket
	<ul style="list-style-type: none"> Coupling 	M00913B001	-	as required
	<ul style="list-style-type: none"> Pin 	Q10651-44	-	as required
3	C+ Meter Assembly	(See Note 2)	-	-
4	Check Valve	N23619-G2	-	1 per meter
	<ul style="list-style-type: none"> O-ring (See Note 3) 	-	-	(See Note 4)
5	Tube Assembly, meter inlet	M02680A001	M00947A001	2
6	Tube Assembly, meter inlet	M02679A001	M00948A001	1

Notes:

1. Pulser Assembly M00453A001 was replaced by M03239B001 in 3/2003. M00905B001 is no longer used.
2. Refer to Meter section in manual for current part number.
3. Refer to Kit K96621-01 for Seal, Gasket, O-ring parts.
4. Quantities may vary.

Bracket Manifold Assembly

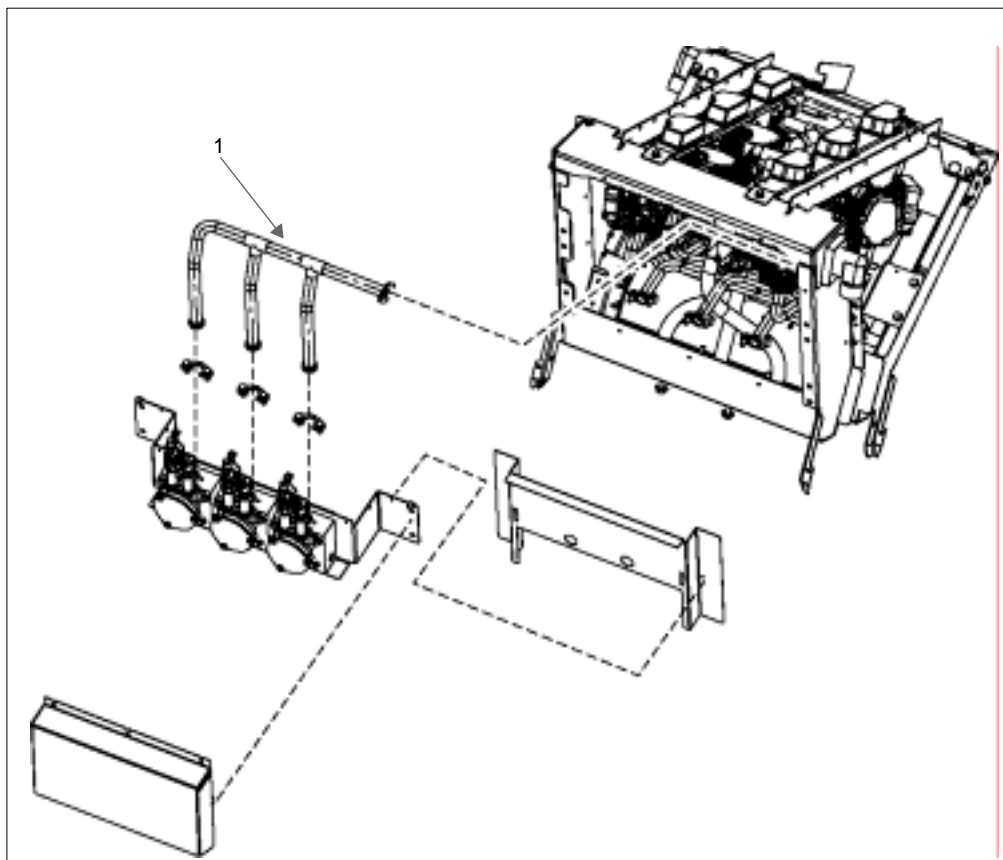


Item #	Description	Current Part	Previous Part	Quantity
1	Digital Control Valve (Replacement kit M02168K001)	M01268K001	M00246A001	A/R
	• Screw M8 x 20	-	-	3
2	Digital Valve Coil	N23785-01	-	A/R
3	Bracket Manifold Assembly	M00922A001	-	2
-	• Screw, metric M8 x 20 (See Note 1)	-	-	4 per bracket
4	Hydraulic Manifold	M00909B002	-	3
	• O-ring (See Note 2)	-	-	3 per manifold
	• Screw, Break bleed	M00986B001	-	3
5	Hydraulic Meter manifold Plate	M00250B001	-	3
6	• Screw M8 x 20 (See Note 1)	-	-	2 per plate

Notes:

1. Use metric hardware kit K96620 01 (includes screws, nuts, bolts) to replace fasteners.
2. Refer to kit K96621 01 to replace O-rings.

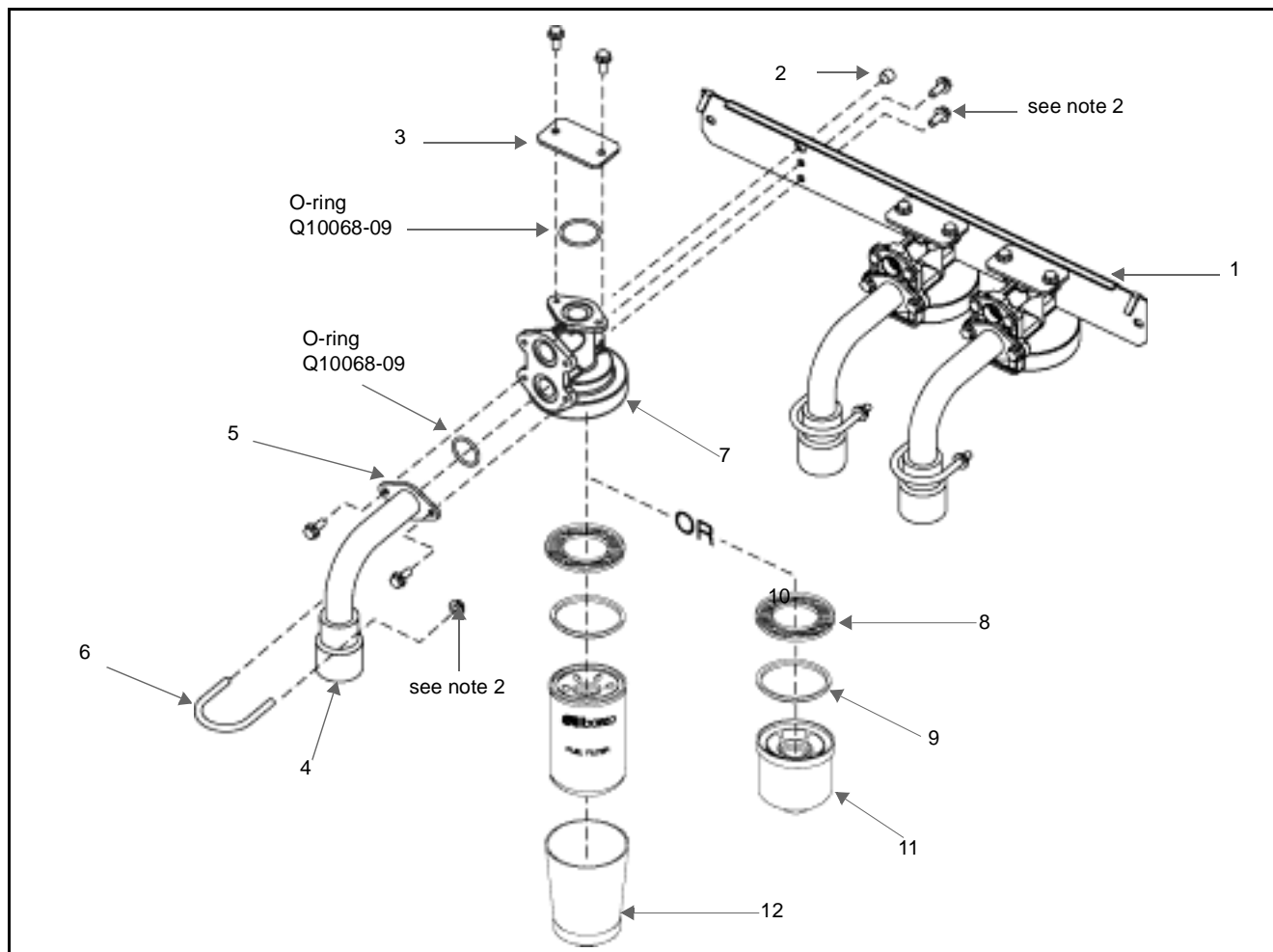
Manifold with Discharge Tubing



Item #	Description	Current Part	Previous Part	Quantity
1	Manifold Discharge tube (three inlets) (dual sided unit)	M00944A001	-	1
Not shown:				
-	Manifold Discharge tube (one inlet)	M00946A001	-	1
-	Manifold Discharge tube (two inlets)	M00945A001	-	1

Lower Hydraulics

Filter Base



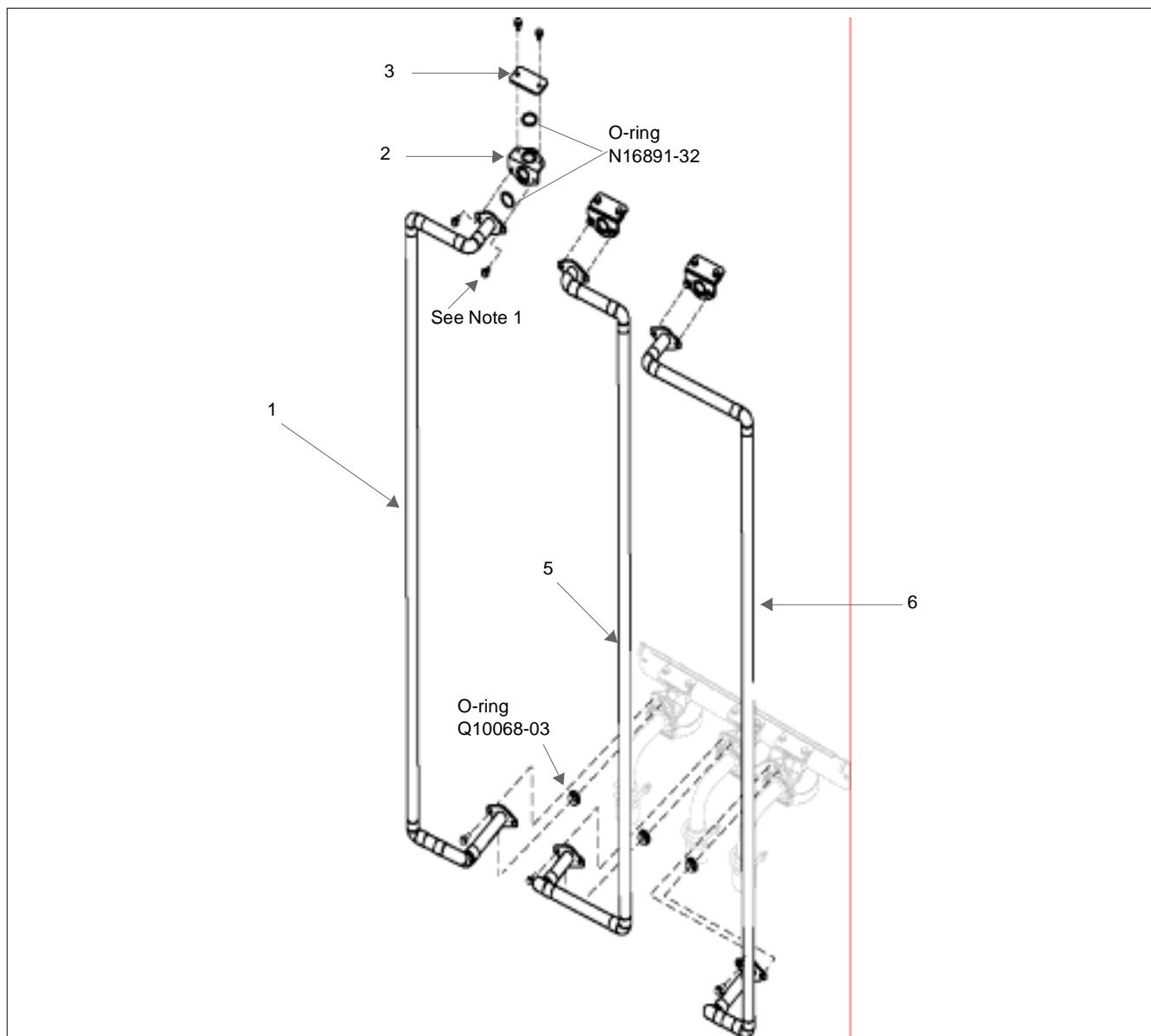
Item #	Description	Current Part	Previous Part	Quantity
1	Front bracket filter	M00171B001	-	1
	• Screw (See Note 2)	-	-	2
2	Pipe Plug	K60756	-	1
3	Filter Manifold Hydraulic plate	M00244B001	-	1
	• O-ring (See Note 3)	-	-	(See Note 1)
4	Filter pipe inlet	M00233B001	-	1
5	Parflange	N23908-01	-	1
6	U-bolt, metric	M00703B002	-	1
	• Nut, m8 (See Note 2)	-	-	2
7	Fuel Filter base	M02546B011	M00197B010	1
8	Strainer, filter (See Note 1)	R19457	-	-

Item #	Description	Current Part	Previous Part	Quantity
9	Gasket	K93485	-	1
10	Filter (See Note 1)	R20039	-	1 per manifold
11	Filter cap (<i>optional</i>) (See Note 1)	R18896-01	-	1 per manifold
12	Fuel collector	K34593	-	1 per manifold

Notes:

1. Quantity varies per assembly.
2. Use kit K96620-01 (includes screws, nuts, bolts) to replace nuts and screws.
3. Use seals and gasket kit K96621-01 (includes seal, gasket, O-rings) to replace seals.

Discharge Tubing



Item #	Description	Current Part	Previous Part	Quantity
1	Discharge tubing	M02467A001	-	1
2	Coupling tube connector	M02582B011	-	1 per tube
3	Hydraulic Filter Plate	M00244B001	-	1 per connector
-	• Screw M8 x 20 (See Note 1)	-	-	2 per clamp
4	O-ring (See Note 2)	-	-	1 per tube
5	Discharge tubing	M02469A001	-	1
6	Discharge tubing	M02468A001	-	1

Notes:

1. Use kit K96620-01 (includes screws, nuts, bolts) to replace nuts and screws.
2. Use seals and gasket kit K96621-01 (includes seal, gasket, O-rings) to replace seals.