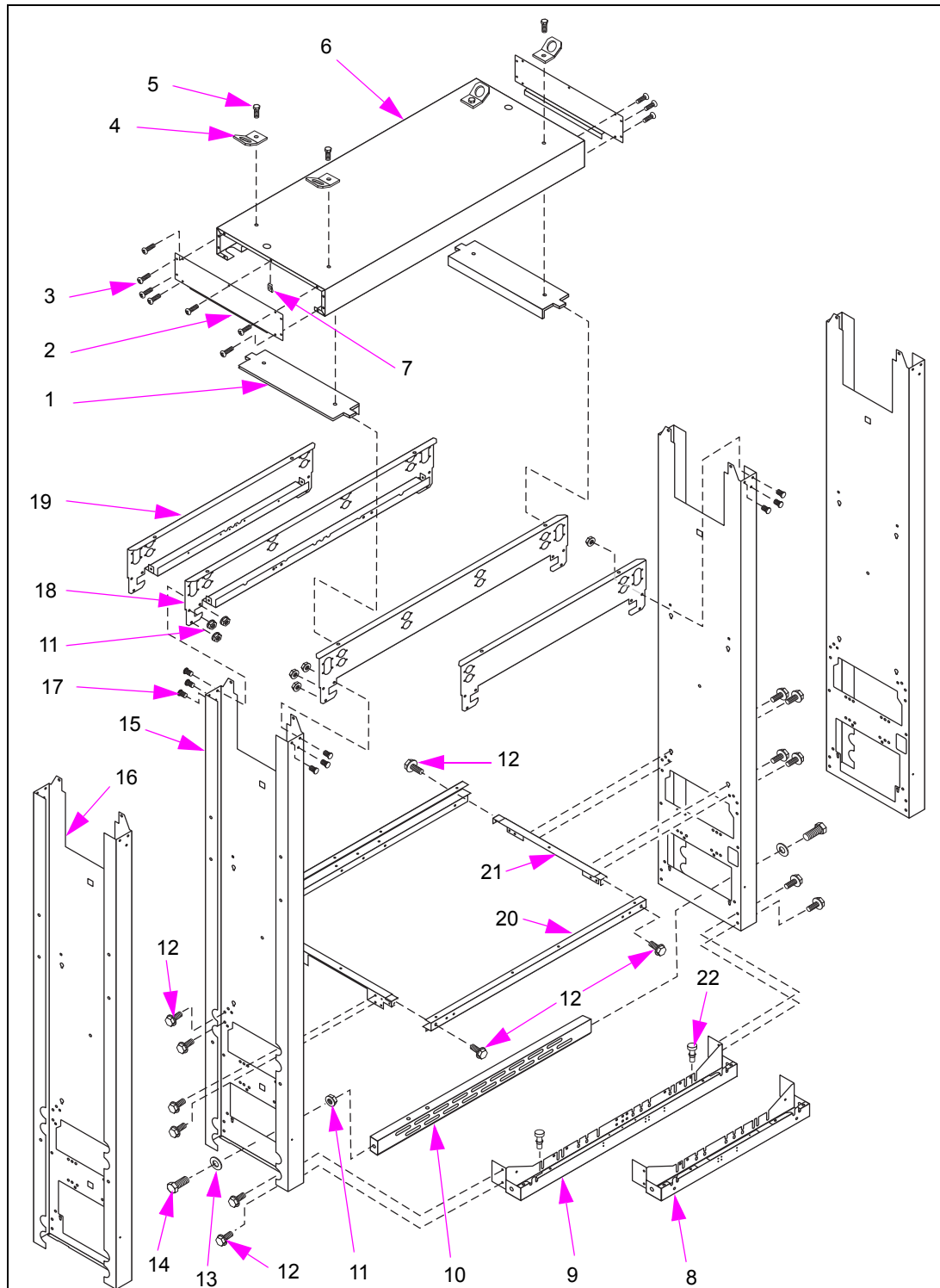


## 9 – Frames and Sheathing Section

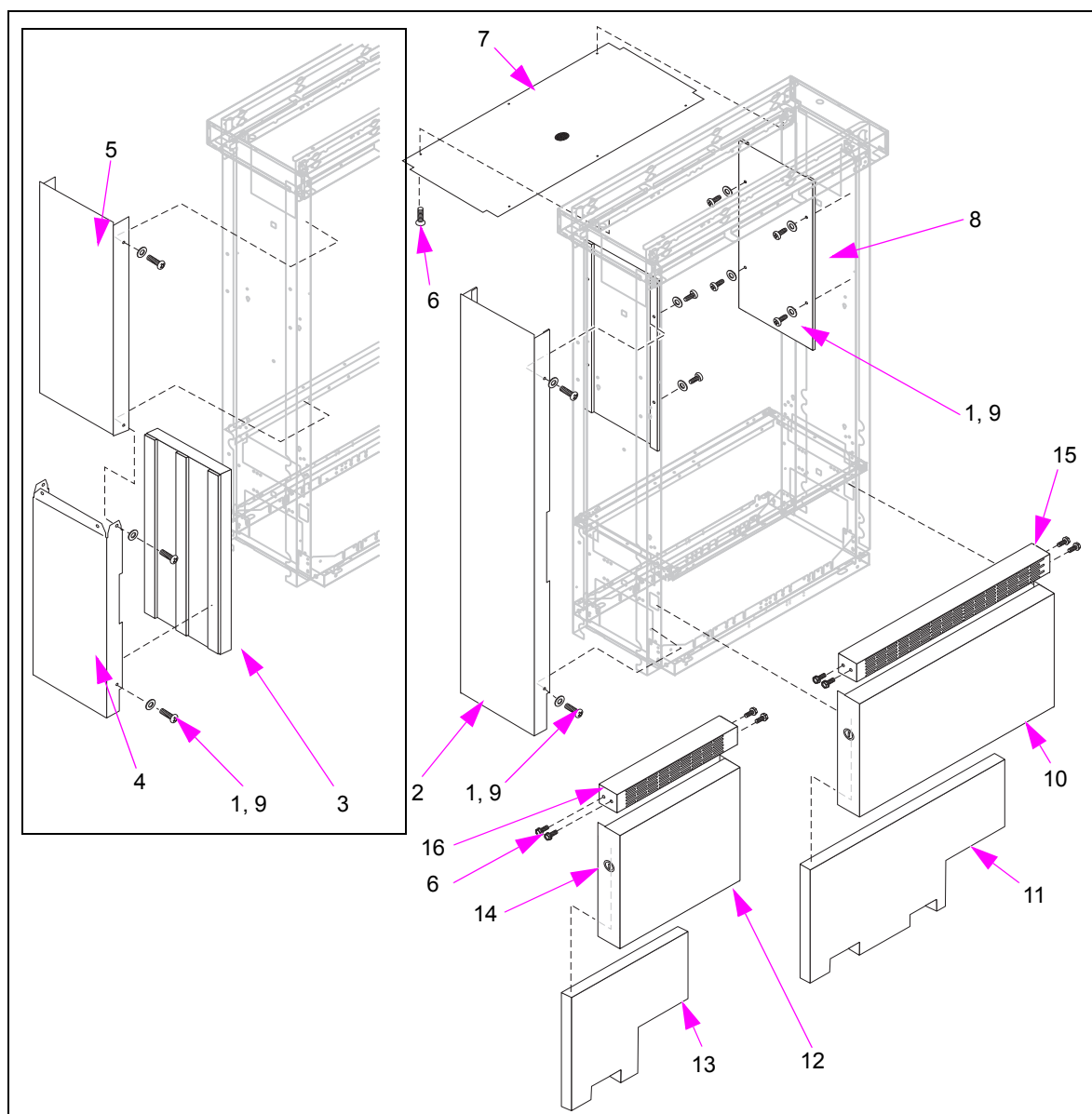
### Frames



Item #	Part Description	Current Part	Previous Part	Quantity
1	Internal Lifting Bracket (obsolete, see note 5)	-	T19853-G1 T18842-G1	2
2	End Cover, Upper Housing – Wide Frame End Cover, Upper Housing – Narrow Frame	W03866-G1**B0 W03867-G1**B0	W02988-02	2
3	Screw, 10-32 X 1/2"			
	• Stainless Steel	Q11270-174	-	(see note 1)
	• Black	Q11270-274	-	(see note 1)
4	Lifting Bracket	N23295	-	4
5	Bolt, 3/8-16 X 1" (8-grade, lifting component)	Q12617-01	-	4
6	Cover, Upper Housing			
	• 48", 3-grade, Black	W03866-G1	W02982-01	1
	• 48", Black, for MPD 4-grade	W03866-G1	W02982-03	1
	• 48", Painted (black)		W02982-04 (see note 2)	
	• 48", Painted (black), for MPD 4-grade		W02982-05 (see note 2)	
	• 36", 1- or 2-grade, Single-hose, Black	W03867-G1	W03016-01	1
	• 36", 1- or 2-grade, Single-hose, Painted		W03016-02	
	• 36", 2-grade, dual-hose, Black (obsolete, see note 5)	-	W03063-01	-
7	Speed Nut, Type U	K81038-26	-	(see note 1)
8	Base, 36" (black)	W03578-01**B0	W02973-02	2
9	Base, 48" (black)	W03573-01**B0	W02954-02	2
10	Inlet Piping Support (dispenser only)			
	• 36"	T20129-01	T18853-01	1
	• 48"	T20101-01	T18841-01	1
11	Nut, 5/16-18	Q11890-05	-	(see note 1)
12	Screw, 5/16-18 X 3/4"	K85736-43	-	(see note 1)
13	Washer	K42999	-	2
14	Bolt, 5/16-18 X 7/8"	K45523	-	2
15	Column, Dispensers	W02972-03 W02972-02	W02972-02 T18748-G2	2
16	Column, Pumps	W03112-03 W03112-02	W03112-02 W03112	2
17	Stud, 5/16-18 X 1/2"	K83677-20	-	8
18	Upper Piping Housing Support, 48"	W03650-01 W02971-03 W02971-02	W02971-03 W02971-02 W02971-01	2
19	Upper Piping Housing Support, 36" – Single-hose Blender	W03666-01	W03012-02	2
	Upper Piping Housing Support, 36" – Dual-hose Blender (obsolete, see note 6)	-	W03012 W03666-02	
20	Rail Support, Hydraulics			
	• 36"	T18507-02**B0	-	2
	• 48"	T18407-03	T18407-02	2
21	Rail End, Hydraulics	W03648-01	W02956-02	2
22	Rubber Bumper	Q10775-05	-	4

Item #	Part Description	Current Part	Previous Part	Quantity
<b>Not Shown</b>				
-	For Hose Outlet Plug <ul style="list-style-type: none"> <li>• Bracket</li> <li>• Nut</li> <li>• Cover</li> </ul>	N23308 Q10099-01 R19442-G1	-	1
<b>Notes:</b> 1. Quantity varies with model. 2. Order-entry item and specify the color and graphics while ordering. 3. **B0 indicates black color is required. 4. All parts may not be available as spare parts. 5. No replacement. 6. W03666-02 is obsolete and no replacement.				

## Sheathing



Item #	Part Description	Current Part	Previous Part	Quantity
1	Screw, 10-32 X 1/2"			
	• Stainless Steel	Q11270-174	-	(see note 1)
	• Black	Q11270-274	-	(see note 1)
2	One-piece Outer Sheathing			
	• Stainless Steel (obsolete, see note 2)	-	W02981-01	2
	• Black (obsolete, see note 2)	-	W02981-02	2
	• Extended Reach Model (stainless steel)	W03285-01	-	2
3	Column Insulation (pumps only) (see note 3) (obsolete, see note 2)	-	R19744	2
4	Outer-lower Sheathing, Painted Black, Two-piece (see notes 4 and 5) (obsolete, see note 6)	-	W03104-06 W03104-03	2
5	Outer-upper Sheathing, Painted Black, Two-piece (see note 4) (obsolete, see note 2)	-	W03103-06 W03103-03	2
6	Screw			
	• Stainless, 10-32 X 3/8"	K85736-47	-	(see note 1)
	• Black, 10-32 X 3/8"	K85736-45	-	(see note 1)
7	Bottom Plate, Upper Housing			
	• 48", black	T18837-01	T18752	1
	• 48", painted (see note 4)	T18837-02**B0	T18752	1
	• 36", black	T18838-02**B0	T18838-01	1
	• 36", painted (see note 4)	T18838-02**B0	T18752	1
8	Inner Sheathing			
	• Stainless steel	W03078-01	-	2
	• Black	W03078-05**B0	W03078-02	2
	• Painted (black)	W03078-03**B0	-	2
9	Nylon Washer, Black (used with Q11270-274 Screw; see Item #1)	K90997	-	(see note 1)
10	Lower Access Panel, 48" (with lock and keys)			
	• White	W02755-G1	-	2
	• Stainless steel	W02755-G2	-	2
	• Painted	W02755-GXX (see note 2)	-	2
11	Lower Door Insulation, 48" (pumps only)			
	• Side A (obsolete, see note 2)	-	R19747	1
	• Side B (obsolete, see note 2)	-	R19748	1
12	Lower Access Panel, 36" (with lock and keys)			
	• White	W02959-G1	-	2
	• Stainless Steel	W02959-G2	-	2
	• Painted	W02959-GXX (See note 4)	-	2

Item #	Part Description	Current Part	Previous Part	Quantity
13	Lower Door Insulation, 36" (pumps only)			
	• Side A (obsolete, see note 2)	-	R19745	1
	• Side B	R19745	R19746	1
14	Key (see note 8)	K83512-25S	K83512-25	4
	Lock Assembly	K94246-01	-	4
15	Air Gap Grill, 48" Units			
	• Dispenser (black)	T20001-01**B0	T18462-01	2
	• Pump (obsolete, see note 2)	-	W03113	2
16	Air Gap Grill, 36" Units			
	• Dispenser (black)	T20083-01**B0	T18509-01	2
	• Pump (black) (obsolete, see note 2)	-	W03114****B0	2

**Notes:**

1. Quantity varies with model.
2. No replacement..
3. Column Insulation (R19744) is not sold individually.
4. Order-entry item. Please specify color and graphics when ordering.
5. Outer-lower sheathing, painted black, two-piece W02871-04\*\*B0 is not sold individually.
6. W03104-06 is obsolete and no replacement.
7. \*\*\*\* B0 indicates color code (black) is required.
8. Key (K83512-25) is now sold in packages of 10 keys. Individual keys are no longer sold as of 2/24/12.
9. All parts may not be available as spare parts.