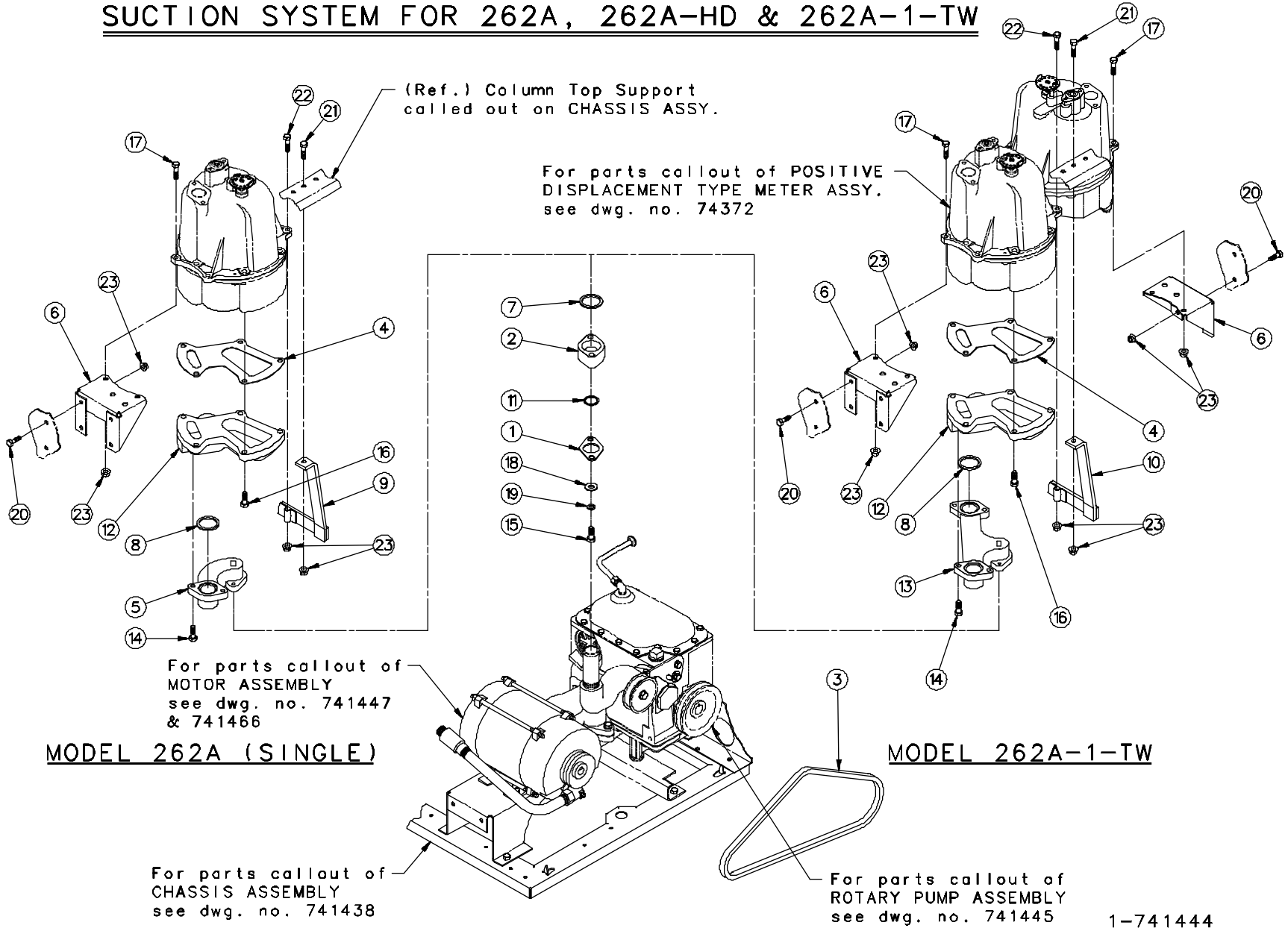


Section Eight

Suction Systems

	Page Number	
	2	
	6	
Suction System for 262A, 262A-HD & 262A-1-TW	8-2, 8-3	2
Motor Assembly for 262A-HD	8-4, 8-5	A
Motor Assembly for 262A & 262A-1-TW	8-6, 8-7	
Rotary Pump Assembly	8-8, 8-9	
Suction System for 262A-2-TW	8-10, 8-11	D
Motor Assembly for 262A-HD-2-TW	8-12, 8-13	I
Motor Assembly for 262A-2-TW	8-14, 8-15	S
Rotary Pump Assembly	8-16, 8-17	P
Suction System for 262A-HS	8-18, 8-19	E
Motor Assembly for 262A-HS	8-20, 8-21	N
Rotary Pump Assembly	8-22, 8-23	S
Rotary Pump & Air Separator	8-24—8-27	E
		R

SUCTION SYSTEM FOR 262A, 262A-HD & 262A-1-TW



1-741444

1-741444

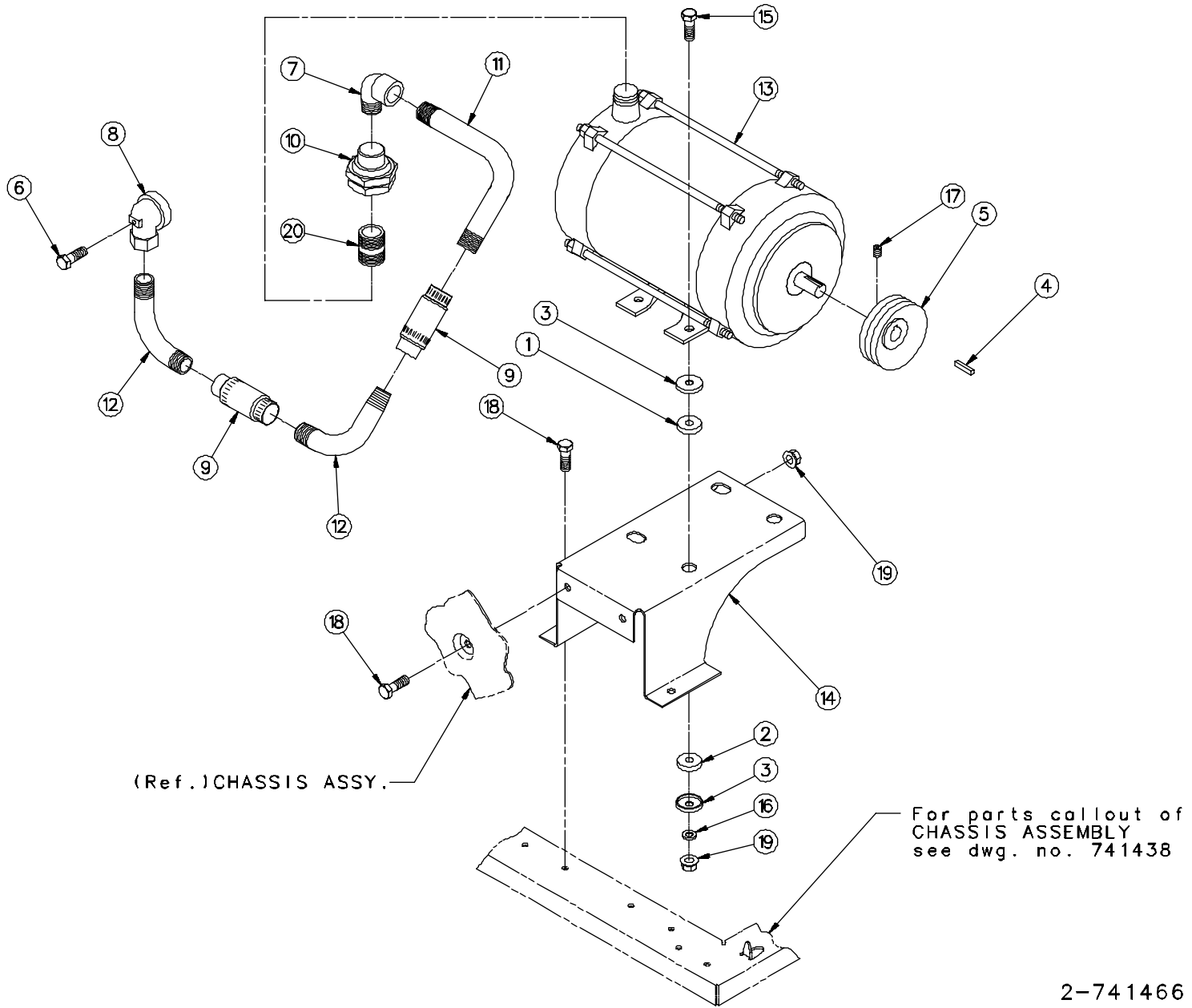
1 of 1

SUCTION SYSTEM MODEL 262A-HD & 262A-1-TW

Item	Part No.	Description	Item	Part No.	Description
1	1-129618	Flange	17	296-50361	5/16-18 X 1-1/8 Large Hex. Head Cap Screw
2	1-224019	Coupling	18	03-50611	5/16 Plate Washer
3	<u>"V" Belt</u>		19	14-50641	5/16 Lockwasher
	9-37852	262A-HD 3/4 H.P. 60 Cycle Motor	20	35-54742	5/16-18 X 5/8 Large M-F Hex. Head Whiz-Lock Screw
	15-37852	All Except 262A-HD	21	38-54742	5/16-18 X 1" Large M-F Hex. Head Whiz-Lock Screw
	17-37852	262A-HD 3/4 H.P. 380 Volt	22	43-54742	5/16-18 X 2" Large M-F Hex. Head Whiz-Lock Screw
	28-37852	262A-HD 3/4 H.P. 50 Cycle Motor	23	02-54752	5/16-18 M-F Flange Whiz-Lock Nut
4	1-38082	Meter Transfer Body Gasket			For complete Meter & Strainer Assembly order:
5	1-310979	Meter Inlet Connector		316594-3	Gallons
6	1-312008	Meter Support		316594-9	Litre
7	6-313235	Gasket			
8	13-313235	Gasket			
9	315582-1	Meter Mounting Bracket Weld Assembly			
10	315582-2	Meter Mounting Bracket Weld Assembly			
11	19-318940	"O" Ring			
12	2-406857	Meter Transfer Body			
13	1-407233	Transfer Body Manifold			
14	35-50361	5/16-18 X 1" Large Hex. Head Cap Screw			
15	38-50361	5/16-18 X 1-3/4 Large Hex. Head Cap Screw			
16	66-50361	5/16-18 X 1-1/4 Large Hex. Head Cap Screw			

1-741444

MOTOR ASSEMBLY FOR 262A-HD



1-741466

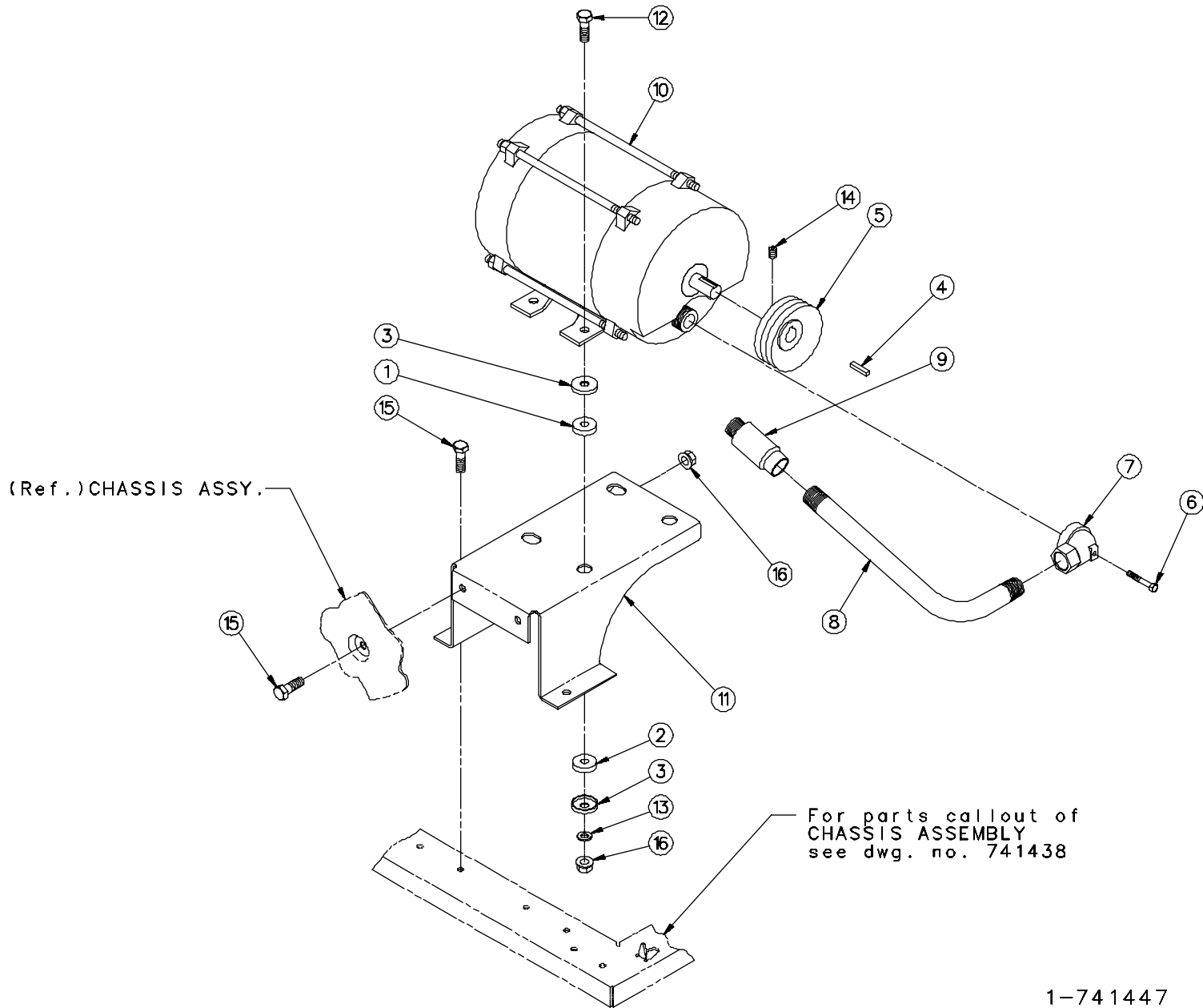
1 of 1

MOTOR ASSEMBLY FOR 262A-HD

Item	Part No.	Description	Item	Part No.	Description
1	1-114468	Cushion Grommet			(Thermal Protection)
2	1-114469	Cushion Washer			
3	1-114470	Cushion Retainer			
4	1-119636	Key	14	1-411235	Motor Support
5	<u>Motor Pulley</u>		15	37-50361	5/16-18 x 1-1/2" Long Hex Head Cap Screw
	1-119529	262A-HD 3/4 H.P. 60 Cycle	16	03-50611	5/16" Plate Washer
	1-220878	262A-HD 3/4 H.P. 50 Cycle	17	65-50721	5/16-18 x 1/4" Long Hex Socket Head Cup Point Set Screw
6	1-121413	Special Screw	18	35-54742	5/16-18 x 5/8" Long M-F Hex Head Whiz-Lock Screw
7	1-128035	1/2 x 90° Conduit Street Elbow	19	02-54752	5/16-18 M-F Flange Whiz-Lock Nut
8	1-214107	Conduit Connector	20	02-50710	3/4" x 1-3/8" Close Conduit Nipple
9	1-219892	Expansion Union			For complete Motor Conduit Assembly order:
10	1-227391	3/4" x 1/2" Conduit Union (Female)			316481-2 262A-HD 115/230 Volt
11	1-227605	Conduit			316481-3 262A-HD 380 Volt
12	1-230742	Conduit			For complete 3/4 H.P. Motor Assembly order:
13	<u>Motor 3/4 H.P. (115/230 Volt) Volt 60/50 Cycle</u>				316479-3 262A-HD 115/230 Volt 50 Cycle
	2-417119	General Electric			316479-4 262A-HD 380 Volt 50 Cycle
	1-419108	Franklin Electric			316479-5 262A-HD 380 Volt 50 Cycle (Thermal Protected)
	1-421174	A.O. Smith			
	<u>Motor 3/4 H.P. 380 Volt 50 Cycle</u>				
	1-420499	Franklin Electric			
	2-420499	Franklin Electric			

2-741466

MOTOR ASSEMBLY FOR 262A & 262A-1-TW



1-741447

1-741447

1 of 1

MOTOR ASSEMBLY FOR 262A & 262A-1-TW

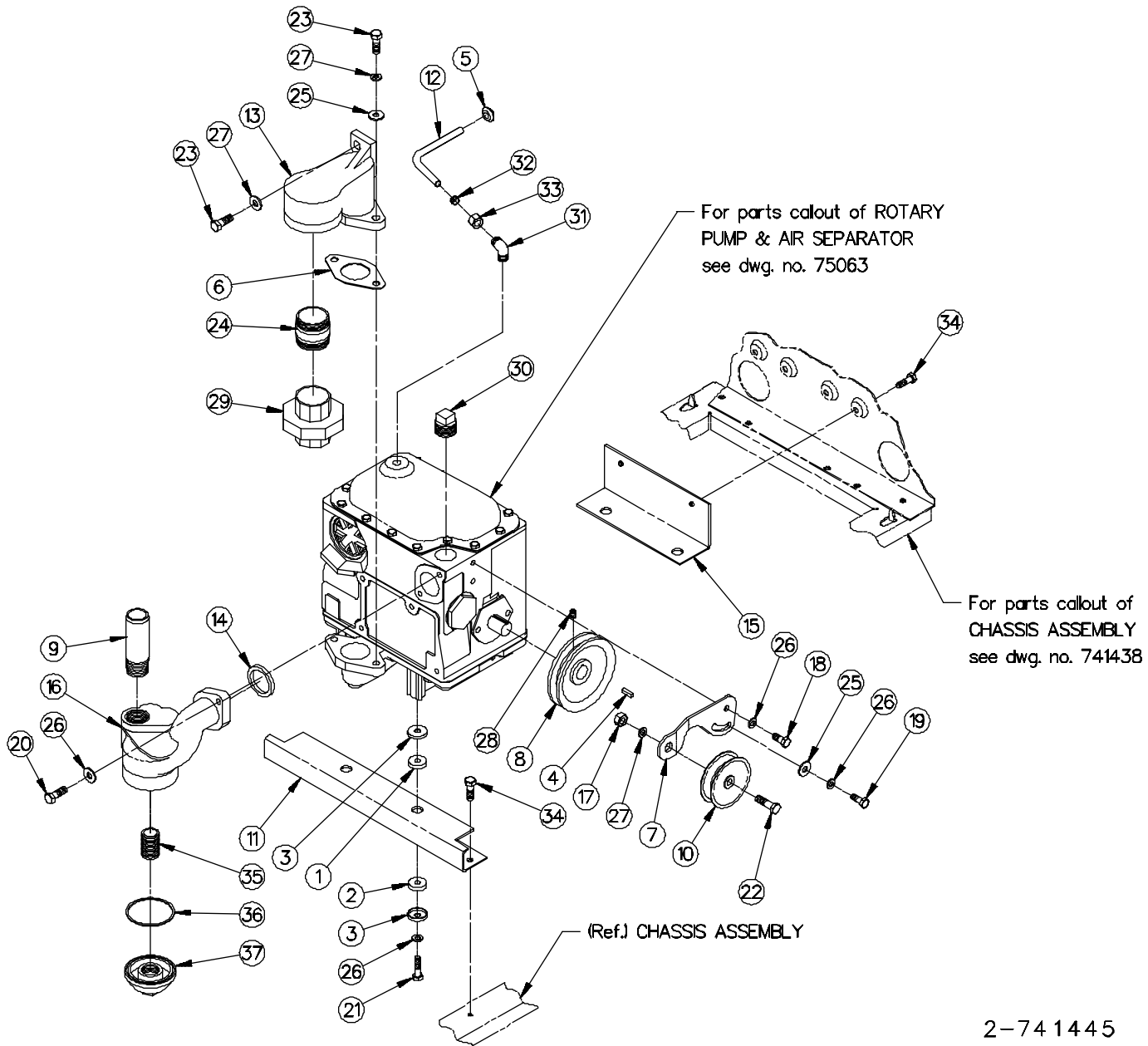
Item	Part No.	Description	Item	Part No.	Description
1	1-114468	Cushion Grommet			Head Cap Screw
2	1-114469	Cushion Washer	13	03-50611	5/16" Plate Washer
3	1-114470	Cushion Retainer	14	65-50721	5/16-18 x 1/4" Long Hex Socket Head Cup Point Set Screw
4	1-119636	Key	15	35-54742	5/16-18 x 5/8" Long M-F Hex Head Whiz-Lock Screw
5	<u>Motor Pulley</u>		16	02-54752	5/16-18 M-F Flange Whiz- Lock Nut
	1-119529	262A-1-TW			
	2-221339	262A			
6	1-121413	Special Screw			
7	1-214107	Conduit Connector			
8	1-218860	Motor Conduit			
9	1-218941	Expansion Union			
10	<u>Motor 1/3 H.P. (115/230 Volt) (262A)</u>				
	1-405586	A. O. Smith			
	4-408411	General Electric			
	1-412766	Franklin Electric			
	<u>Motor 1/2 H.P. (115/230 Volt) (262A-1-</u>				
		<u>TW)</u>			
	1-406206	Leland			
	2-408389	A. O. Smith			
	2-415138	General Electric			
	2-416908	Franklin Electric			
11	1-411235	Motor Support			
12	37-50361	5/16-18 x 1-1/2" Long Hex			

**For complete Motor Conduit Assembly
order:**

39168-1 262A & 262A-1-TW

1-741447

ROTARY PUMP ASSEMBLY FOR 262A, 262A-HD & 262A-1-TWIN



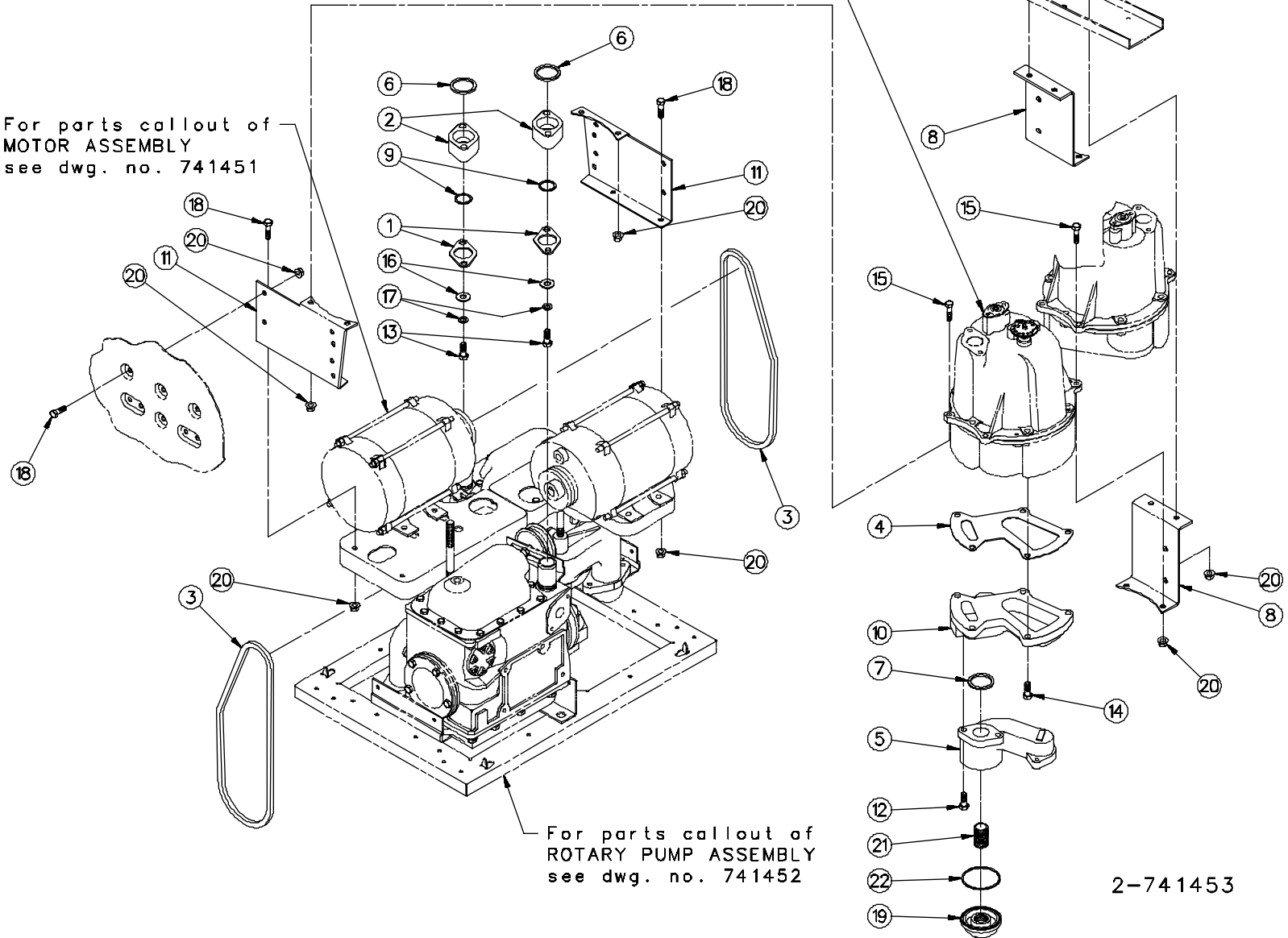
ROTA RY PUMP ASSEMBLY FOR 262A, 262A-HD & 262A-1-TWIN

Item	Part No.	Description	Item	Part No.	Description
1	1-114468	Cushion Grommet	25	03-50611	5/16" Plate Washer
2	1-114469	Cushion Washer	26	14-50641	5/16" Lockwasher
3	1-114470	Cushion Retainer	27	15-50641	3/8" Lockwasher
4	1-119636	Key	28	65-50721	5/16-18 x 1/4" Long Hex Socket Head Cup Point Set Screw
5	1-127786	Grommet	29	<u>1-1/2" Female Union (262A & 262A-1-TW)</u>	
6	1-217902	Pump Inlet Connection Gasket		07-51780	150#
7	1-217903	Idler Arm		27-51780	250#
8	<u>Pump Pulley</u>			<u>2" Female Union (262A-HD)</u>	
	1-216295	262A-HD & 262A-1-TW		08-51780	150#
	2-221338	262A		28-51780	250#
9	2-220383	Coupling Nipple	30	06-51901	1" Pipe Plug
10	1-221668	Idler Pulley	31	05-52020	Compression Elbow
11	1-221821	Pump Support	32	05-52040	Compression Sleeve
12	2-224150	Vent Tube	33	14-52040	Compression Nut
13	1-38403	Pump Inlet Connection	34	35-54742	5/16-18 x 5/8" Long M-F Hex Head Whiz-Lock Screw
14	137-311105	Gasket	35	1-125865	Nipple
15	1-312034	Pump Support Bracket	36	16-313235	Gasket
16	Rotary Pump Discharge Connection		37	<u>Filter</u>	
	1-407225	Without Wix Filter		1-218950	Standard Duty Wix Filter
	3-411304	With Wix Filter		1-226999	Water Alert Filter
17	03-50301	3/8-16 Hex Nut		1-318183	Cap (Wix GFB Filter)
18	32-50361	5/16-18 x 5/8" Long Hex Head Cap Screw		1-311509	Heavy Duty Wix Filter
19	33-50361	5/16-18 x 3/4" Long Hex Head Cap Screw	For complete Rotary Pump Assembly order:		
20	35-50361	5/16-18 x 1" Long Hex Head Cap Screw	405952-37	262A-HD (Gallon)	
21	36-50361	5/16-18 x 1-1/4" Long Hex Head Cap Screw	411284-2	262A-1-TW (Gallon)	
22	67-50361	3/8-16 x 1-1/2" Long Hex Head Cap Screw	411284-5	262A (Gallon)	
23	297-50361	3/8-16 x 1-1/8" Long Hex Head Cap Screw	411284-10	262A (Litre)	
			411284-11	262A-1-TW (Litre)	
			411284-14	262A-HD (Litre)	
24	<u>Pipe 1-1/2" x (262A & 262A-1-TW)</u>		For complete Idler Arm & Pulley Assembly order:		
	269-50510	2-1/4" Long (Used with 27-51780)	37277-5	262A & 262A-1-TW & Canada	
	119-50560	2-1/2" Long (Used with 07-51780)	37277-24	262A-HD	
	<u>Pipe 2" x (262A-HD)</u>				
	316-50510	2-1/4" Long (Used with 28-51780)			
	138-50560	2-1/2" Long (Used with 08-51780)			

SUCTION SYSTEM FOR 262A-2-TW

For parts callout of POSITIVE DISPLACEMENT TYPE METER ASSY. see dwg. no. 74372

For parts callout of MOTOR ASSEMBLY see dwg. no. 741451



2-741453

2-741453

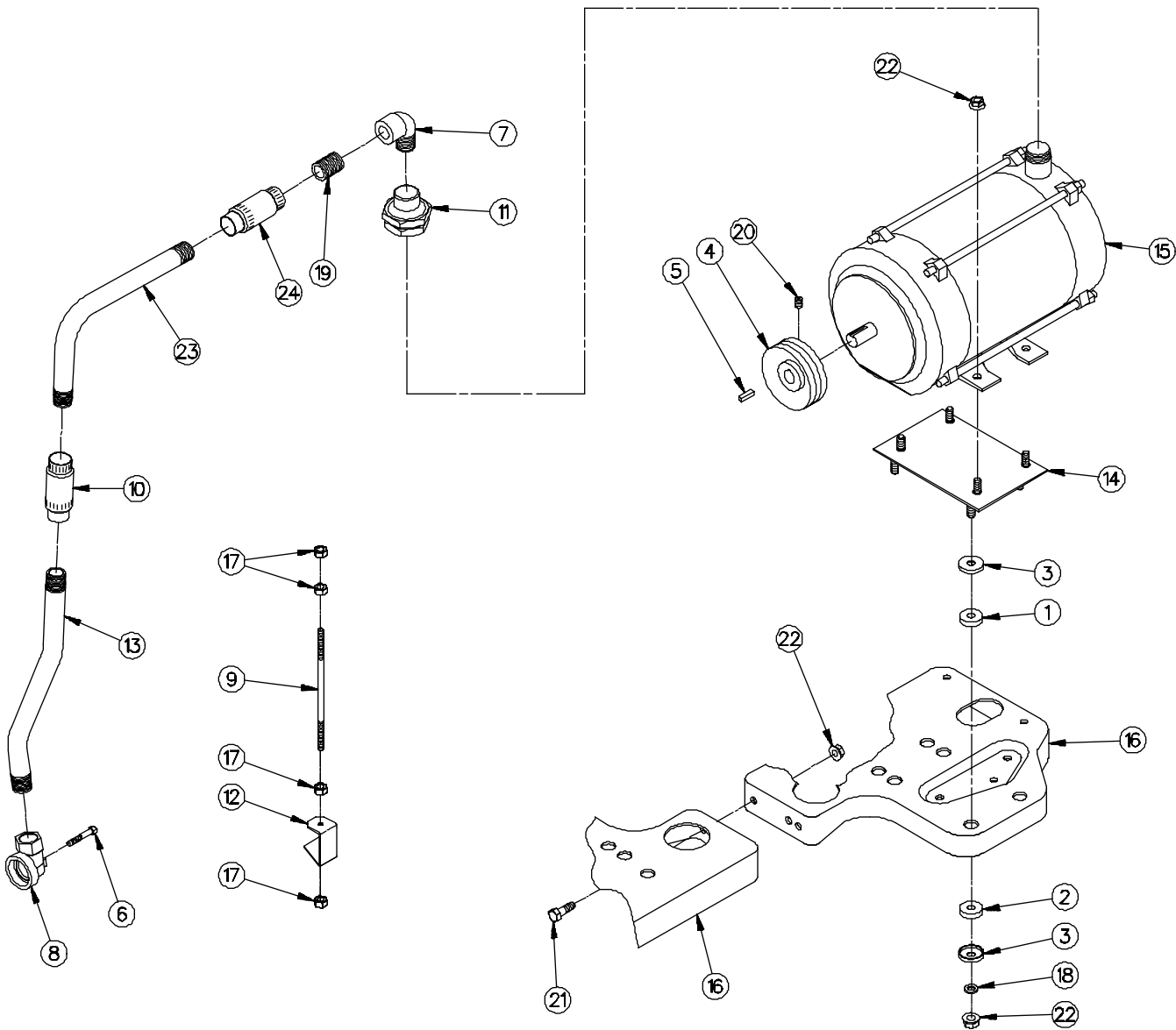
1 of 1

SUCTION SYSTEM FOR 262A-2-TW

<u>Item</u>	<u>Part No.</u>	<u>Description</u>	<u>Item</u>	<u>Part No.</u>	<u>Description</u>
1	1-129618	Flange	15	296-50361	5/16-18 x 1-1/8" Long Hex Head Cap Screw
2	1-224019	Coupling	16	03-50611	5/16" Plate Washer
3	<u>"V" Belt</u>		17	14-50641	5/16" Lockwasher
	10-37852	262A-2-TW	18	35-54742	5/16-18 x 5/8" Long M-F Hex Head Whiz-Lock Screw
	25-37852	262A-HD-2-TW			
4	1-38082	Meter Transfer Body Gasket	19	<u>Filter</u>	
5				1-218950	Standard Duty Wix Filter
	<u>Manifold</u>			1-226999	Water Alert Filter
	1-312061	Without Wix Filter	1-318183	Cap (Wix GFB Filter)	
	1-312062	With Wix Filter	1-311509	Heavy Duty Wix Filter	
6	6-313235	Gasket	20	02-54752	5/16-18 M-F Flange Whiz-Lock Nut
7	13-313235	Gasket	21	1-125865	Nipple
8	1-314602	Meter Mounting Bracket	22	16-313235	Gasket
9	19-318940	"O" Ring	For complete Meter & Strainer Assembly		
10	2-406857	Meter Transfer Body	order:		
11	1-411187	Meter & Motor Mounting Bracket	316594-3	262A-2-TW	
12	35-50361	5/16-18 x 1" Long Hex Head Cap Screw	316594-9	262A-2-TW Canada	
13	38-50361	5/16-18 x 1-3/4" Long Hex Head Cap Screw	<hr/>		
14	66-50361	5/16-18 x 1-1/4" Long Hex Head Cap Screw	2-741453		

262A Dispenser Parts Manual Form 4660 Version 2.0
Tokheim Corporation October-1991 Rev. 07/29/94

MOTOR ASSEMBLY FOR 262A-HD-2-TW



2-741467

2-741467

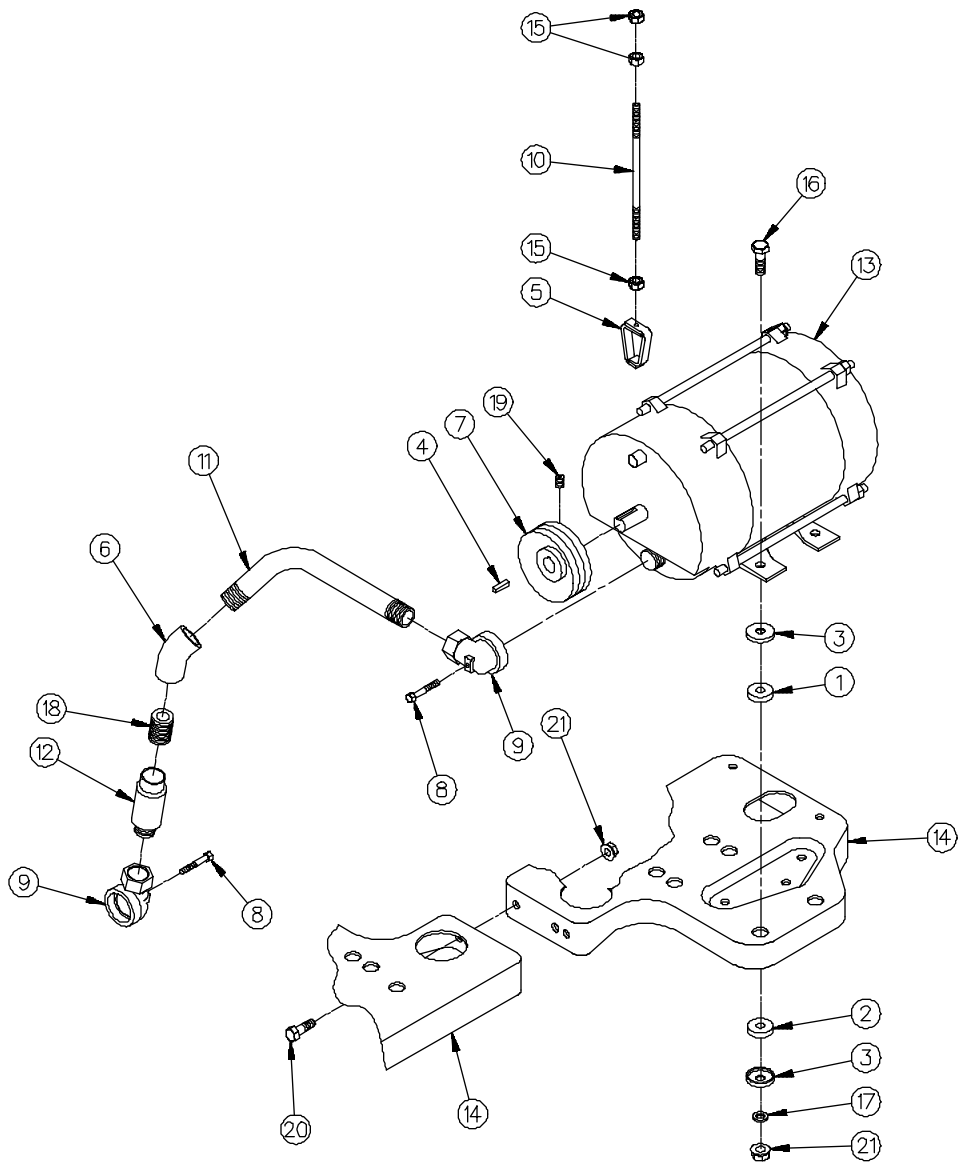
1 of 1

MOTOR ASSEMBLY FOR 262A-HD-2-TW

Item	Part No.	Description	Item	Part No.	Description
1	1-114468	Cushion Grommet	18	03-50611	5/16" Plate Washer
2	1-114469	Cushion Washer	19	<u>Conduit Nipple 1/2" x</u>	
3	1-114470	Cushion Retainer		14-50710	1-1/2" Long (262A-HD-2-TW 380 Volt)
4	<u>Motor Pulley 3/4 H.P.</u>			26-50710	3" Long (262A-2-TW 115/230 Volt)
	2-119529	60 Cycle	20	65-50721	5/16-18 x 1/4" Long Hex Socket Head Cup Point Set Screw
	2-220878	50 Cycle	21	35-54742	5/16-18 x 5/8" Long M-F Hex Head Whiz-Lock Screw
5	1-119636	Key	22	02-54752	5/16-18 M-F Flange Whiz-Lock Nut
6	1-121413	Special Screw	23	1-319363	Conduit
7	1-128035	1/2" x 90° Conduit Street Elbow	24	<u>Expansion Union</u>	
8	1-214107	Conduit Connector		1-218941	Male/Female (115/230 Volt)
9	2-218591	Motor Support Rod		1-219892	Female (380 Volt)
10	1-219892	Expansion Union		For complete Motor Conduit Assembly order:	
11	1-227391	Conduit Union		319315-1	115/230 Volt
	07-51841	Face Bushing		319315-2	380 Volt
12	1-230752	Motor Support Bracket		For complete Motor Assembly order:	
13	1-319408	Motor Conduit		316479-3	3/4 H.P. 50/60 Cycle
14	319110-1	Adapter Plate Weld Assembly		319067-1	3/4 H.P. (380 Volt)
15	<u>3/4 H.P. Motor (115/230 Volt)</u>			319067-2	3/4 H.P. (115/230 Volt)
	2-417119	Franklin Electric			
	1-419108	General Electric			
	1-421174	A.O. Smith			
	<u>3/4 H.P. Motor (380 Volt)</u>				
	319067-1	Franklin Electric			
16	3-407915	Motor & Connection Box Support			
17	01-50301	1/4-20 Hex Nut			

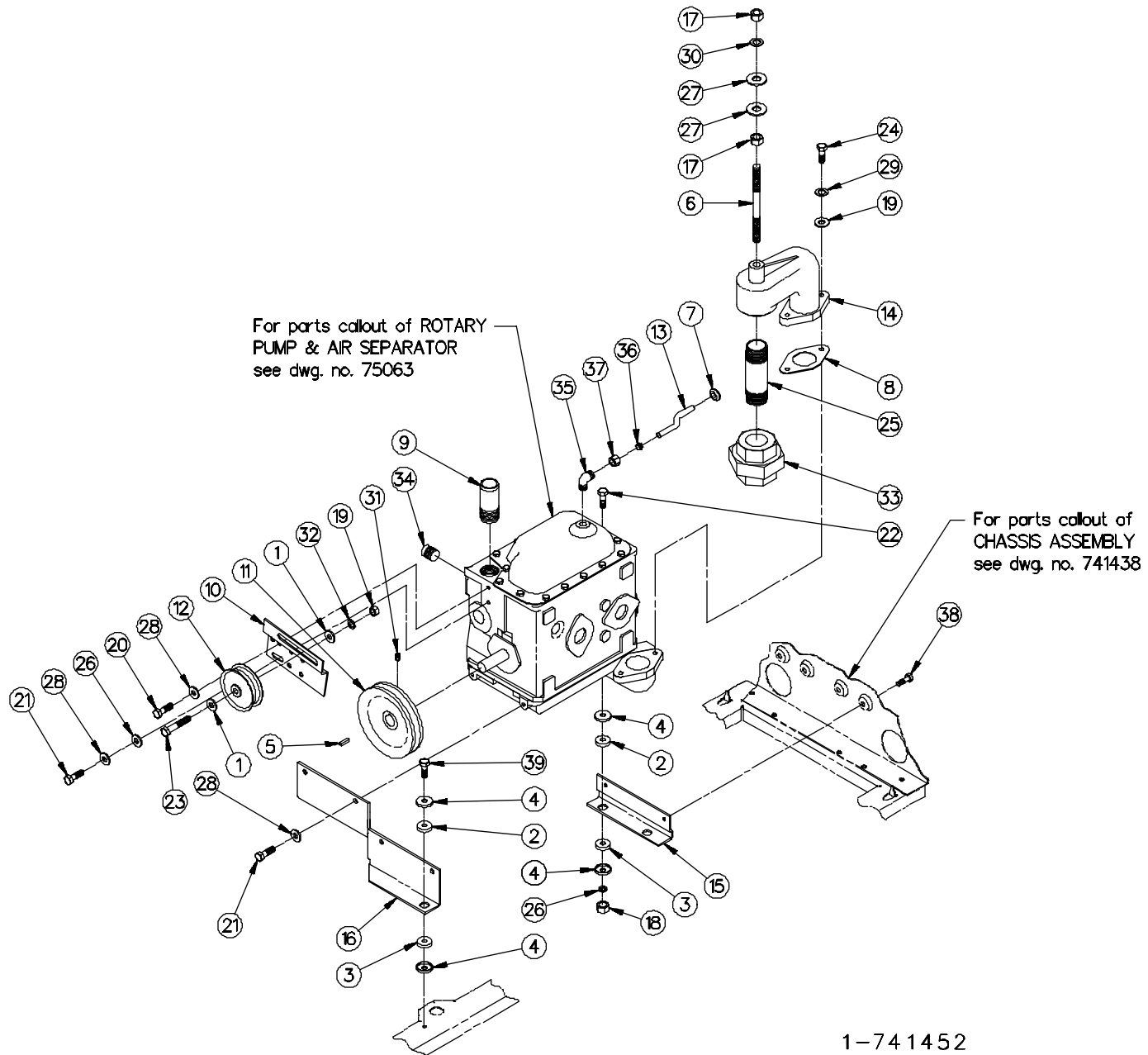
2-741467

MOTOR ASSEMBLY FOR 262A-2-TW



1-74 1451

ROTARY PUMP ASSEMBLY FOR 262A-2-TW



1-741452

1-741452

1 of 1

ROTA RY PUMP ASSEMBLY FOR 262A-2-TW

<u>Item</u>	<u>Part No.</u>	<u>Description</u>	<u>Item</u>	<u>Part No.</u>	<u>Description</u>
1	2-13867	Washer	28	14-50641	5/16" Lockwasher
2	1-114468	Cushion Grommet	29	15-50641	3/8" Lockwasher
3	1-114469	Cushion Washer	30	17-50641	1/2" Lockwasher
4	1-114470	Cushion Retainer	31	65-50721	5/16-18 x 1/4" Long Hex Socket
5	1-119636	Key			Head Cup Point Set Screw
6	1-124981	Suction Support Stud	32	27-50761	3/8" Lockwasher
7	1-127786	Grommet			
8	1-217902	Pump Inlet Connection Gasket	33	<u>1-1/2" Female Union</u>	
9	2-220383	Coupling Nipple		07-51780	150#
10	1-220849	Idler Arm		27-51780	250#
11	1-216295	Pump Pulley			
12	1-221668	Idler Pulley	34	06-51901	1" Pipe Plug
13	2-224156	Vent Tube	35	05-52020	Compression Elbow
14	1-38510	Pump Inlet Connection	36	05-52040	Compression Sleeve
15	1-312036	Pump Support Bracket	37	14-52040	Compression Nut
16	1-413442	Pump Support	38	35-54742	5/16-18 x 5/8" Long M-F Hex Head
17	05-50271	1/2-13 Hex Jam Nut			Whiz-Lock Screw
18	02-54752	5/16-18 M-F Flange Whiz-Lock Nut	39	38-54742	5/16-18 x 1" Long M-F Hex Head
19	03-50301	3/8-16 Hex Nut			Whiz-Lock Screw
20	32-50361	5/16-18 x 5/8" Long Hex Head Cap Screw			
21	33-50361	5/16-18 x 3/4" Long Hex Head Cap Screw			
22	38-50361	5/16-18 x 1-3/4" Long Hex Head Cap Screw			
23	67-50361	3/8-16 x 1-1/2" Long Hex Head Cap Screw			
24	297-50361	3/8-16 x 1-1/8" Long Hex Head Cap Screw			
25	<u>Pipe 1-1/2" x</u> 320-50510	4-3/4" Long (Used with 150# Female Union)			
	123-50560	4-1/2" Long (Used with 250# Female Union)			
26	03-50611	5/16" Plate Washer			
27	06-50611	1/2" Plate Washer			

For complete Rotary Pump Assembly order:

407241-5 Gallon
407241-25 Litre

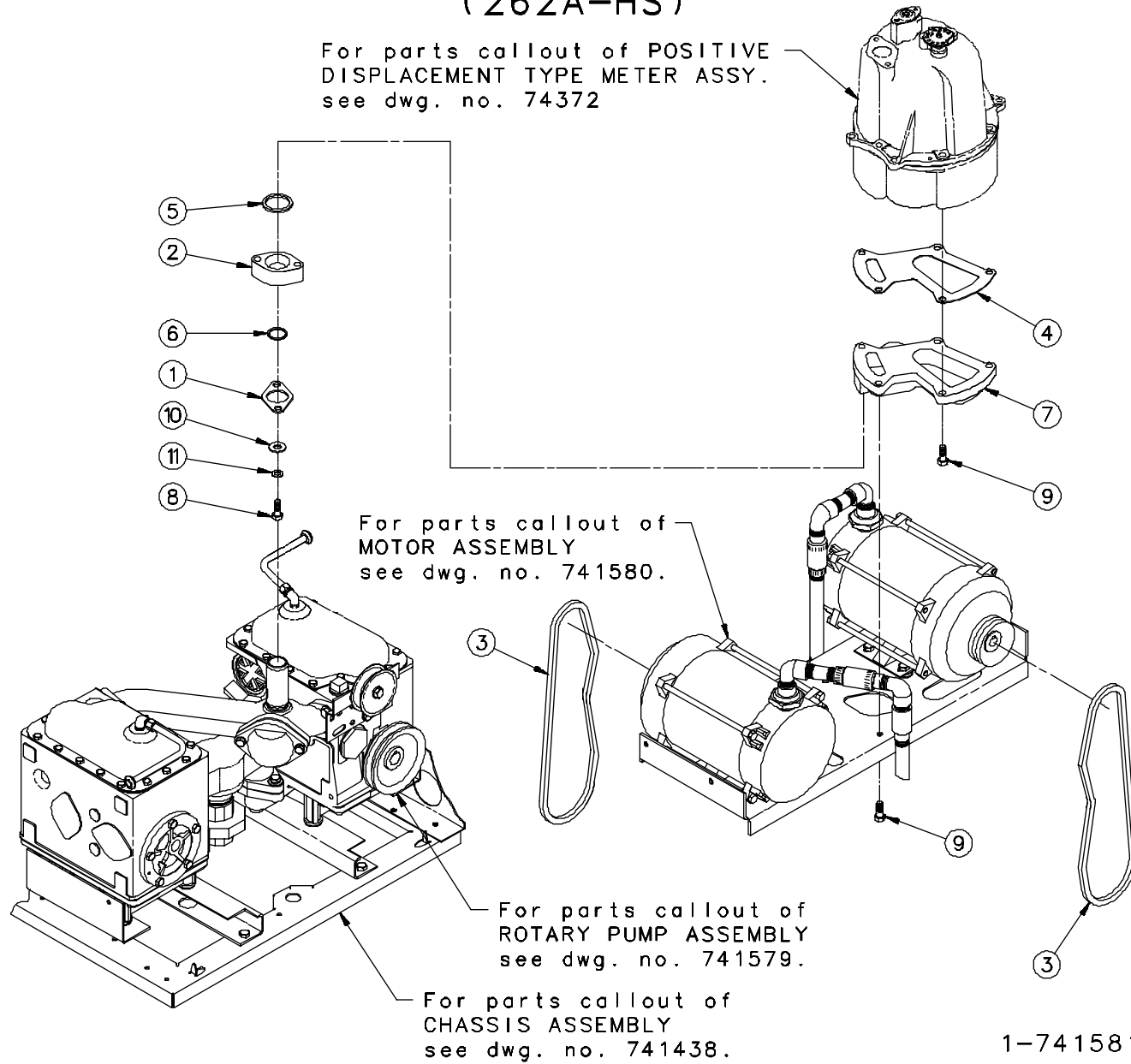
For complete Idler Arm & Pulley Assembly order:

37277-16 262A-2-TW

1-741452

SUCTION SYSTEM (262A-HS)

For parts callout of POSITIVE DISPLACEMENT TYPE METER ASSY. see dwg. no. 74372



1-741581

1 of 1

SUCTION SYSTEM (262A-HS)

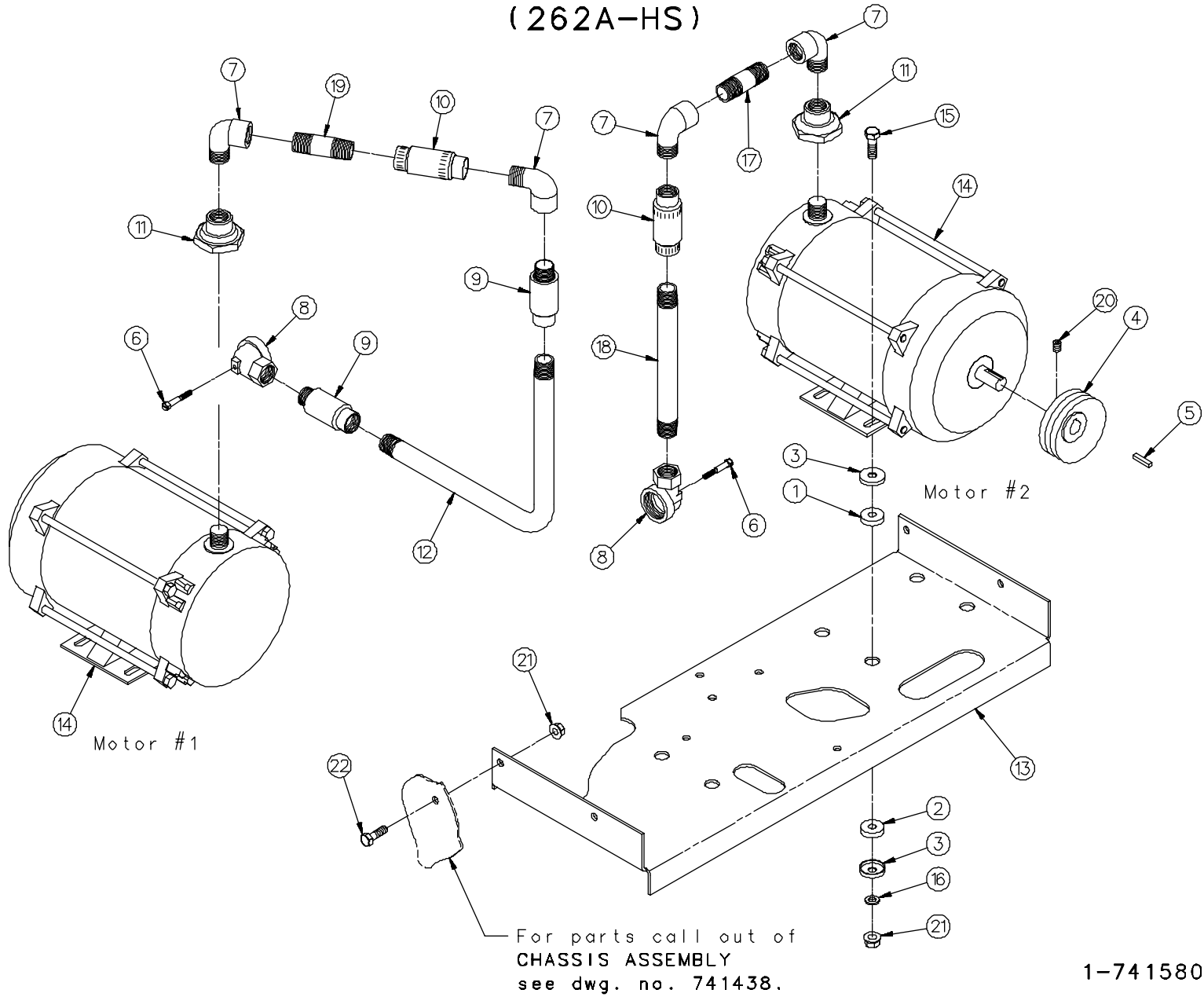
<u>Item</u>	<u>Part No.</u>	<u>Description</u>
1	1-129618	Flange
2	1-224019	Coupling
3	10-37852	"V" Belt
4	1-38082	Meter Transfer Body Gasket
5	6-313235	Gasket
6	19-318940	"O" Ring
7	2-406857	Meter Transfer Body
8	38-50361	5/16-18 x 1-3/4" Long Hex Head Cap Screw
9	66-50361	5/16-18 x 1-1/4" Long Hex Head Cap Screw
10	03-50611	5/16" Plate Washer
11	14-50641	5/16" Lockwasher

For complete Meter & Strainer Assembly order:

316594-3 262A-HS

1-741581

MOTOR ASSEMBLY (262A-HS)

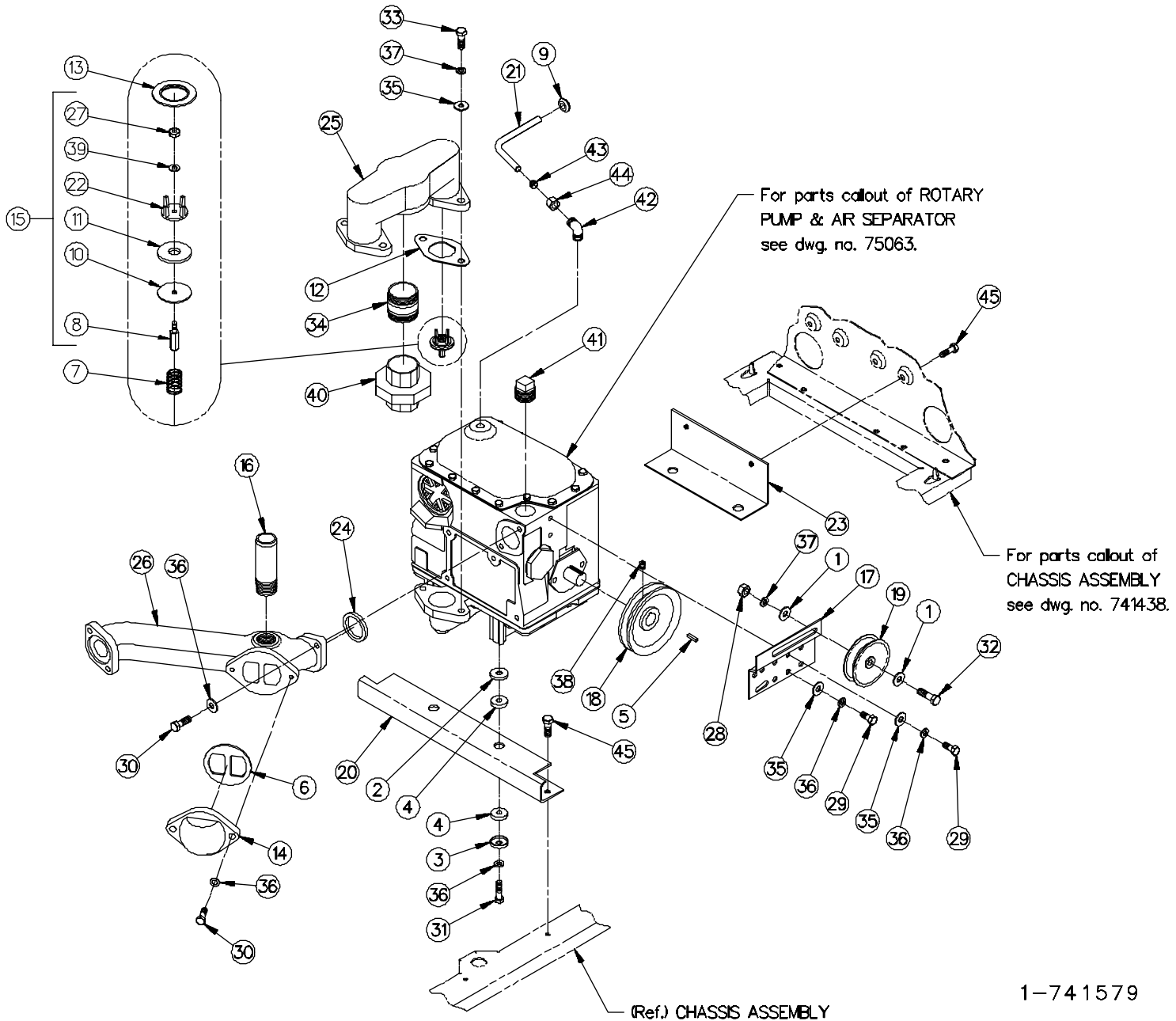


MOTOR ASSEMBLY (262A-HS)

<u>Item</u>	<u>Part No.</u>	<u>Description</u>	<u>Item</u>	<u>Part No.</u>	<u>Description</u>
1	1-114468	Cushion Grommet	17	13-50700	Conduit
2	1-114469	Cushion Washer	18	47-50700	Conduit
3	1-114470	Cushion Retainer	19	20-50710	Conduit
4	1-119529	Motor Pulley	20	65-50721	5/16-18 x 1/4" Long Hex Socket Head Cup Point Set Screw
5	1-119636	Key	21	02-54752	5/16-18 M-F Flange Whiz-Lock Nut
6	1-121413	Special Screw	22	35-54742	5/16-18 x 5/8" Long M-F Hex Head Whiz-Lock Screw
7	1-128035	1/2" x 90° Street Elbow			
8	1-214107	Conduit Connector			
9	1-218941	Expansion Union (Male Female)			
10	1-219892	Expansion Union (Female)	For complete Motor Conduit Assembly order:		
11	1-227391	3/4" x 1/2" Conduit Union (Female)	420650-1	262A-HS Motor #2	
12	2-319063	Conduit	420651-1	262A-HS Motor #1	
13	1-411188	Meter & Motor Mounting Plate			
14	<u>Motor 3/4 H.P. (115/230 Volt)</u>		For complete Motor Assembly order:		
	2-417119	General Electric	316479-3	262A-HS	
	1-419108	Franklin Electric			
	1-421174	A. O. Smith			
15	37-50361	5/16-18 x 1-1/2" Long Hex Head Cap Screw			
16	03-50611	5/16" Plate Washer			

1-741580

ROTARY PUMP ASSEMBLY FOR 262A-HS



1-741579

1-741579

1 of 1

ROTA RY PUMP ASSEMBLY FOR 262A-HS

Item	Part No.	Description	Item	Part No.	Description
1	2-13867	Washer	36	14-50641	5/16" Lockwasher
2	1-114468	Cushion Grommet	37	15-50641	3/8" Lockwasher
3	1-114469	Cushion Washer	38	65-50721	5/16-18 x 1/4" Long Hex Socket Head Cup Point Set Screw
4	1-114470	Cushion Retainer	39	06-50761	#12 Lockwasher Shakeproof
5	1-119636	Key	40	<u>1-1/2" Female Union</u>	
6	1-125619	Gasket		07-51780	150#
7	1-125630	Compression Spring		27-51780	250#
8	1-125632	Check Valve Stem	41	06-51901	1" Pipe Plug
9	1-127786	Grommet	42	05-52020	Compression Elbow
10	1-130561	Poppet Retainer	43	05-52040	Compression Sleeve
11	1-130562	Poppet Seal	44	14-52040	Compression Nut
12	1-217902	Pump Inlet Connection Gasket	45	35-55132	5/16-18 x 5/8" Long M-F Flange Whiz-Lock Screw
13	1-218897	Valve Seat			
14	1-218914	Cover			
15	220300-1	Poppet Disc Assembly			
16	2-220383	Coupling Nipple			
17	1-220849	Idler Arm			
18	1-216295	Pump Pulley			
19	1-221668	Idler Pulley			
20	1-221821	Pump Support			
21	2-224150	Vent Tube			
22	1-225595	Poppet Guide			
23	1-312034	Pump Support Bracket			
24	14-313235	Gasket			
25	2-407747	Pump Inlet Connection			
26	1-407757	Pump Discharge Connection			
27	06-50211	#12-24 Hex Machine Nut			
28	03-50301	3/8-16 Hex Nut			
29	33-50361	5/16-18 x 3/4" Long Hex Head Cap Screw			
30	35-50361	5/16-18 x 1" Long Hex Head Cap Screw			
31	36-50361	5/16-18 x 1-1/4" Long Hex Head Cap Screw			
32	67-50361	3/8-16 x 1-1/2" Long Hex Head Cap Screw			
33	297-50361	3/8-16 x 1-1/8" Long Hex Head Cap Screw			
34	<u>Pipe 1-1/2" x</u> 119-50560 269-50510	2-1/2" Long (Used with 07-51780) 2-1/4" Long (Used with 27-51780)			
35	03-50611	5/16" Plate Washer			

For complete Rotary Pump Assembly order:

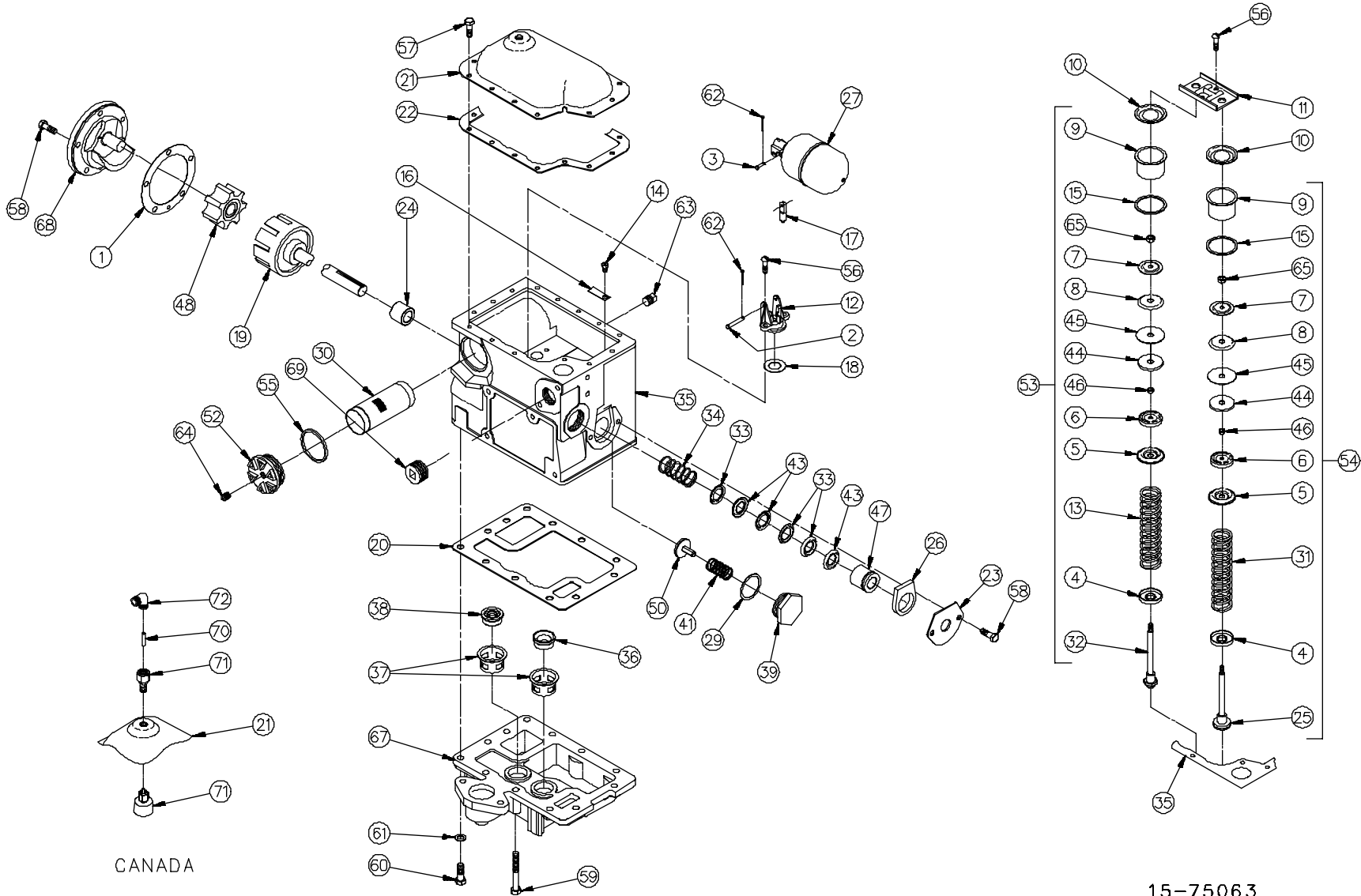
411284-4 262A-HS

For complete Idler Arm & Pulley Assembly order:

37277-16 262A-HS

1-741579

ROTARY PUMP & AIR SEPARATOR



CANADA

15-75063

15-75063

1 of 2

ROTA RY PUMP & AIR SEPARATO R

<u>Item</u>	<u>Part No.</u>	<u>Description</u>	<u>Item</u>	<u>Part No.</u>	<u>Description</u>
1	1-17526	Gasket	21	1-32089	Separator Cover
2	1-18654	Float Lever Pin	22	2-113691	Cover Gasket
3	1-18655	Valve Pin	23	1-113698	Retainer
4	1-18716	Guide Plate	24	1-113703	Bearing
5	1-18717	Spring Plate	25	113776-1	Regulating Poppet Assembly
6	1-18718	Plunger Head	26	1-113819	Oil Well Felt
7	1-18719	Plunger Plate	27	114064-1	Float Assembly
8	1-18720	Plunger Follower	29	21-313235	Gasket
9	1-18721	Valve Cylinder	30	<u>Suction Screen</u>	
10	1-18722	Cylinder Head		1-115075	Gasoline
11	1-18731	Clamp Plate		2-115075	Diesel
12	1-18734	Float Valve Body			
13	<u>By-Pass Valve Spring</u>		31	1-115642	Regulating Valve Spring
	1-18735	(34# To 35-1/2# Spring) (855-BB & 855-CC)	32	1-116628	By-Pass Valve Poppet
	1-131178	(44-1/2# Spring) (855-DD & 855-BB)	33	1-117475	Packing Gland
14	1-18750	Vent Screw	34	1-117660	Packing Spring
15	1-18792	Valve Cylinder Gasket	35	118335-1	Rotary Pump & Separator Body With Gasket, Bearing, Screws & Spring
16	1-18799	Vent Screw Guard	36	1-118590	Regulating Valve Seat
17	1-18860	Float Valve Needle	37	1-118591	Valve Seat Guide
18	1-18961	Float Valve Gasket	38	1-118640	By-Pass Valve Seat
19	25664-1	Pump Rotor Shaft Assembly	39	2-120731	Check Valve Cap
20	1-25879	Bottom Head Gasket	41	1-120733	Poppet Spring
			43	1-121394	"V" Packing
			44	1-126295	Plunger Guide
			45	1-126343	Plunger Disc

CONTINUED NEXT PAGE ...

ROTA RY PUMP & AIR SEPARATO R

<u>Item</u>	<u>Part No.</u>	<u>Description</u>	<u>Item</u>	<u>Part No.</u>	<u>Description</u>
46	1-126344	Plunger Spacer	64	38-51911	1/4" Countersunk Pipe Plug
47	1-210024	Drive Shaft Bearing	65	01-52321	1/4-28 Hex Nut
48	1-211816	Rotary Pump Idler	67	<u>Lower Pump Head With Valve SeatGuides, Regulating Valve Seat.</u>	
50	213168-1	Poppet Disc & Relief Valve Assembly	408143-1	855-BB	
52	<u>Suction Strainer Cap</u>		408143-2	855-CC	
	1-232289	855-BB & 855-DD	408143-4	855-DD	
	2-215030	855-CC			
53	<u>By-Pass Valve Assembly</u>		68	211818-1	Rotary Pump Head Assembly
	217897-2	34# To 35-1/2# Spring (855-BB & 855-CC)	69	27-51901	1" Pipe Plug (855-CC)
	217897-6	44-1/2# Spring (855-DD & 855-BB)	70	1-132735	Valve Stem
54	217898-2	Regulating Valve Assembly	71	1-232164	Float Assembly
55	2-313235	Gasket	72	05-52020	3/8" Tube 90° Elbow
56	403-54921	1/4-20 x 1" Long Phillips Pan Head Machine Screw	For complete Rotary Pump & Air Separator order:		
57	01-50360	1/4-20 x 1/2" Long Hex Head Cap Screw	405952-39	855-BB (162, 162-1-TW, 1248/50A, 1248/50A-1-TW, 1248/50AS, 785, 785MC, 785-1-TW, 262 & 262-1-TW, 311, 312, 322, 324, 413, 426, 614& 628)	
58	34-50360	5/16-18 x 7/8" Long Hex Head Cap Screw	405952-40	855-CC (162-2-TW, 1248/50A-2-TW, 785-2-TW, 262-2-TW)	
59	72-50360	3/8-16 x 2-3/4" Long Hex Head Cap Screw	405952-42	855-DD (162-HC, 1248/50A-HS, 1248/50AS-HS & 785-HC)	
60	297-50360	3/8-16 x 1-1/8" Long Hex Head Cap Screw	405952-43	855-BB (1248/50AS-HD)	
61	15-50641	3/8" Lockwasher (855-CC)			
62	17-51210	1/16" Dia x 1/2" Long Cotter Pin			
63	02-51911	1/4" Square Head Pipe Plug			

NOTES