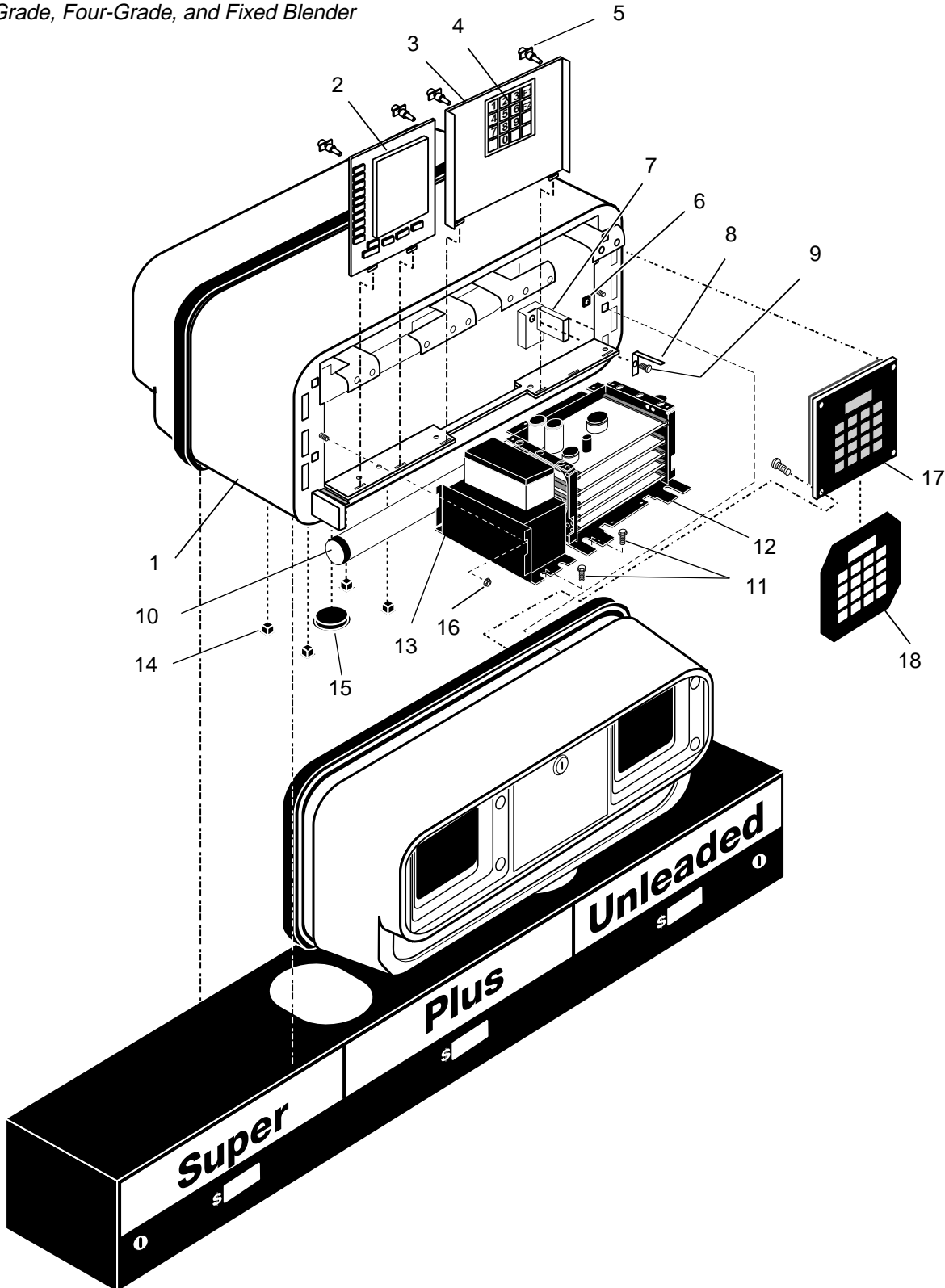


Plate 1.1

MPD®-1 Computer Display Module

Three-Grade, Four-Grade, and Fixed Blender

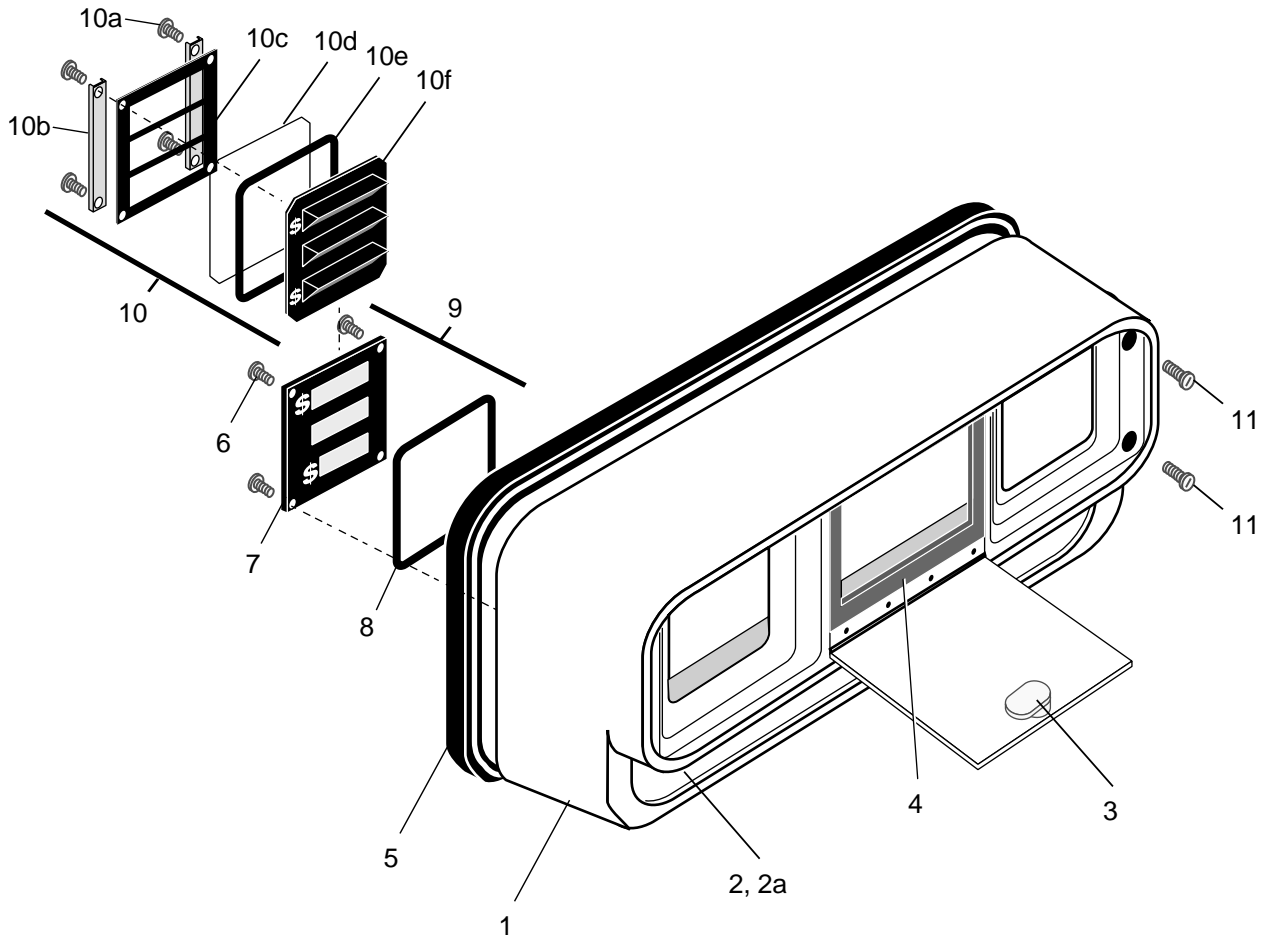


#	Part Description	Part Number	Qty.
1	Housing, Black	T16037-G2S6	1
	Housing, White	T16037-G2S9	1
2	SID Display Board, Decimal (domestic)	T16226-G3	-
	SID Display Board, Comma (export)	T16226-G1	-
3	Operator Panel Assembly	T17298-G2	1
4	Operator Membrane Switch	T17549-G1	1
5	Standoff 3/16"	Q10651-01	-
6	Nut Retainer	K75204	8
7	Lamp Socket	K87111	4
8	Leaf Spring	N21142	4
9	Screw #6-32 x 5/8"	Q11270-38	4
10	Fluorescent Lamp (modified with ground strips)	N21144-G1	2
11	Screw 10-32 x 1/2"	K85736-15	-
12	Modular Card Cage	See Plate 8	1
13	Modular Power Supply	See Plate 9	1
14	Square Plastic Plug	Q11867-01	8
15	Vent Plug	Q10554-13	2
16	Nut #10-32	Q12068-04	2
17	Programmable Preset Display Assembly	R19295-G2	1
18	Keypad Overlay	T17885-XX *	-
19	Keypad Overlay (generic English graphics)	T17885-01	-

* Order entry for graphics.

Plate 1.2 MPD®-1 Bezel

Three-Grade, Four-Grade, and Fixed Blender



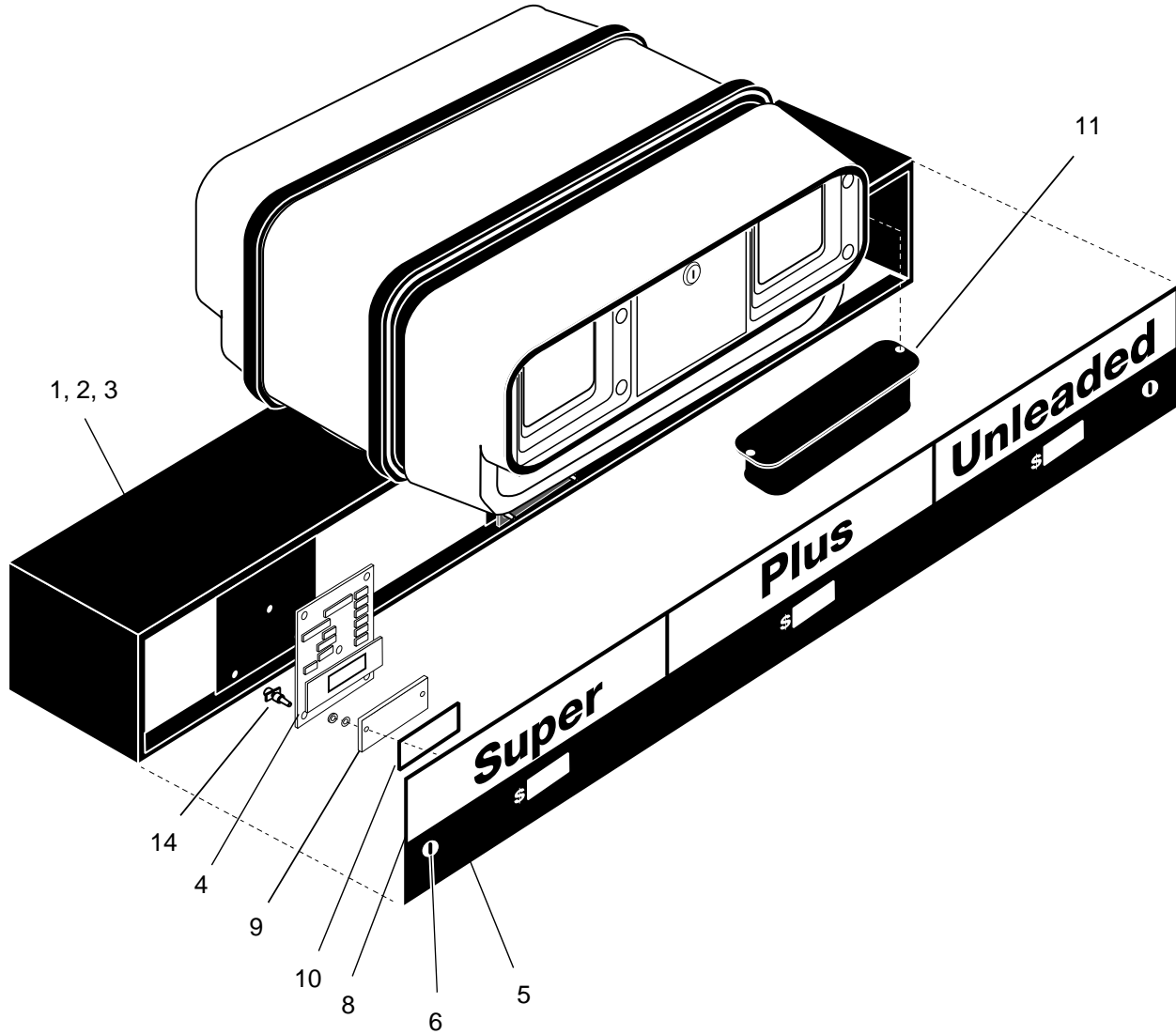
#	Part Description	Part Number	Qty.
1	Bezel Assy. for SID Displays (includes 2-8)	T12641-GX *	2
	Bezel Assy. with Sunshades for SID Displays (includes 2-5, 10a-10f)	T16049-GX *	2
2	Brand Panel Plastic Cover ("L" shaped extruded plastic)	R15188-01	1
2a	Brand Panel (order entry for graphics)	RXXXXX-01 *	1
	Blank Brand Panel	R15189-01	1
3	Access Door and Lock Assy.	R15185-GX *	1
	Access Door and Lock Assy. (English with Gilbarco logo)	R15185-G1	1
	Access Door and Lock Assy. (blank, black without logo)	R15185-G13	1
3a	Lock and Key, (stainless steel)	Q10474-01	1
	Lock and Key (black)	Q10474-02	1
3b	Key	K89699-07	1
4	Access Door Gasket	R15181	1
5	Gasket ("U" shaped)	Q10546-02	1
6	Screw #6-20 x 1/2"	Q11657-26	4
7	Face Plate *	Order Entry	1
	Blanking Plate (black, not shown)	R15175	1
	Blanking Plate (grey, not shown)	R15175-02	1
8	Gasket	R15596	1
9	Bezel Glass Kits for SID Displays (includes 6-8)	Order Entry	**
	Bezel Glass Kit for SID Displays (U.S. gallons)	K89761	**
	Bezel Glass Kit for SID Displays (liters)	K90335	**
10	Sunshade Faceplate Kits (includes 10a-10f)	K92611-XX *	**
	Sunshade Faceplate Kit, U.S. Gallons (standard English graphics)	K92611-01	**
10a	Screw #6 x 3/8"	Q11657-24	4
10b	"U" Channel Stiffener	R17966-01	2
10c	Faceplate Clamp	R15180	1
10d	Lexan Faceplate Window	R17959-01	1
10e	Gasket	R15596-02	1
10f	Tiered Faceplate	T15101-XX *	1
11	Bezel Mounting Bolt 1/4-20 x 3-1/4"	Q11098-08	8
	Bezel Mounting Bolt 1/4-20 x 1-1/2" (behind door)	Q11098-09	2

* Please specify color and graphics when ordering.

** As required.

Plate 1.3
MPD®-1 PPU Box

Three-Grade, Four-Grade, and Fixed Blender



#	Part Description	Part Number	Qty.
1	PPU Box Assembly (includes PPU boards, cables, panels)	T16575 *	1
2	Three Hose	T16575-G11	-
	Six Hose	T16575-G12	-
	Four Hose	T16575-G13	-
	Eight Hose	T16575-G14	-
3	PPU Box Only	T16576-G1 *	1
4	PPU Display Board	T15994-G1	**
	PPU Display Board (replaces T15994)	T17339-G1	**
	Cable For T17339-G1S (not shown)	R18393-G2	**
	PPU Board Replacement Kit (includes T17339-G1 & R18393-G2)	K93367	**
5	Panel Assembly Only, Three Grade	T15871-G1	2
	Panel Assembly Only, Blank	T15871-G2	2
	Panel Assembly Only, Four Grade	T15871-G3	2
6	Lock Assembly, Black	Q10474-02	4
	Lock Assembly, Stainless	Q10474-01	4
7	Key (not shown)	K89699-07	4
8	Brand Panel, Three Grade	R16080-02 *	2
	Brand Panel, Four Grade	R16080-03 *	2
9	PPU Filter Window	K92814	**
10	PPU Filter Window Gasket	K92815	**
11	Ballast (220-240VAC, 50 Hz)	Q10797-01	1
	Ballast (115VAC, 50/60 Hz)	Q10746-01	1
12	Gasket 42" x 1/2" (not shown)	R19268-02	**
13	Gasket 5" x 1/2" (not shown)	R19268-03	**
14	Circuit Board Support 1/2"	Q10651-04	-

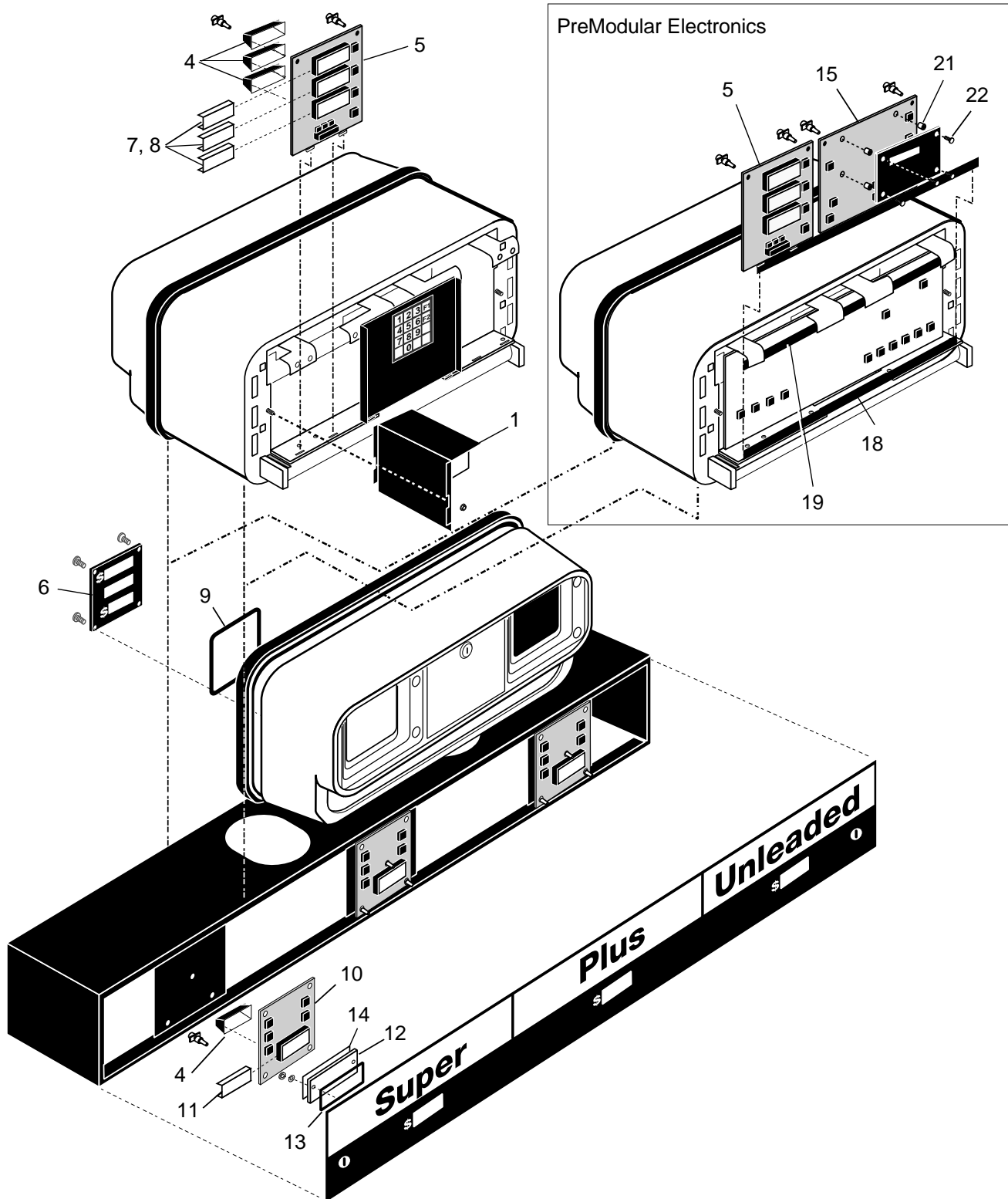
* Order entry for graphics.

** Quantity varies with model.

Plate 1.4

MPD®-1 • LCD Retrofits

Three-Grade, Four-Grade, and Fixed Blender

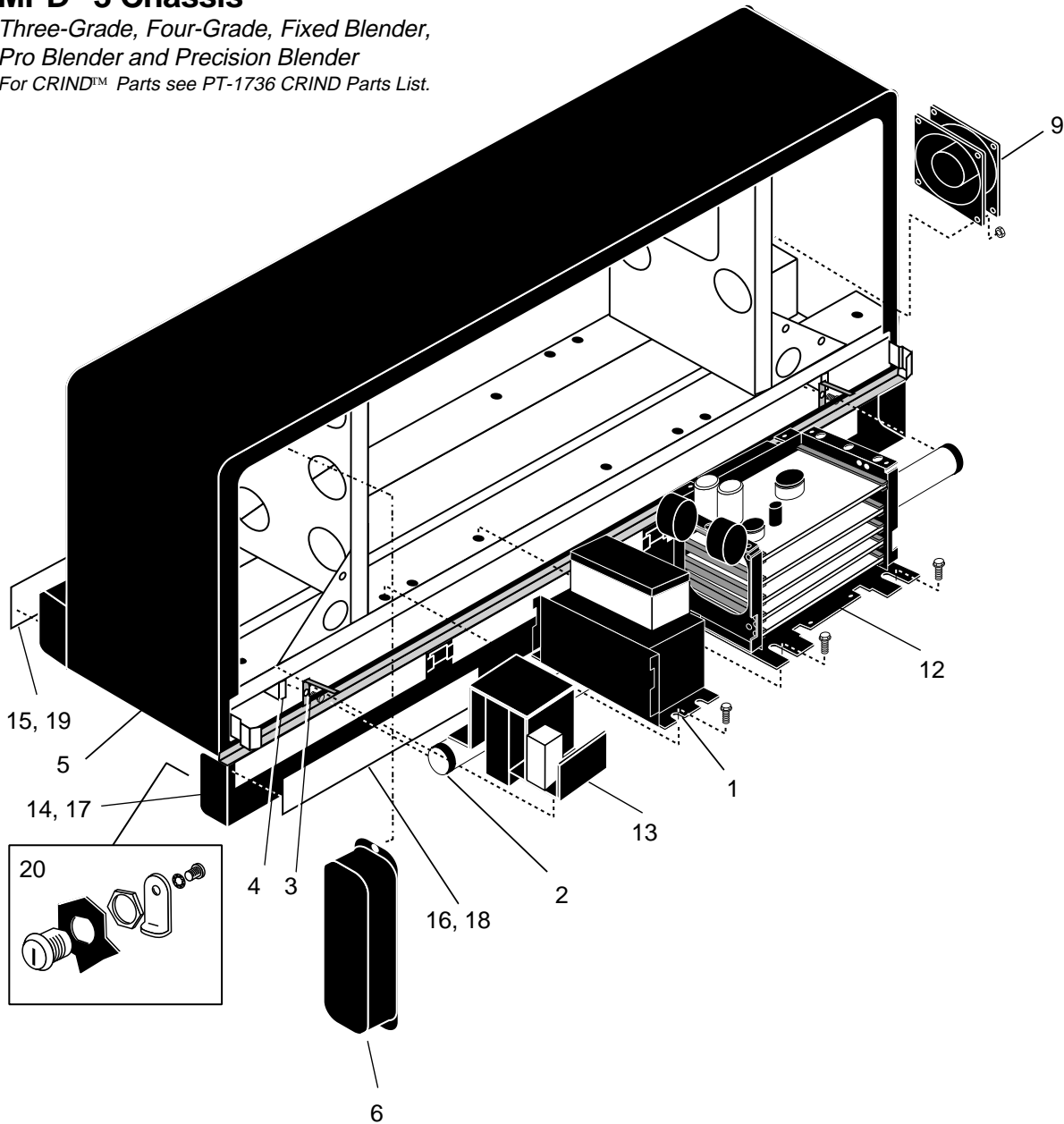


#	Part Description	Part Number	Qty.
1	Power Supply	T18968-G1	1
2	24VAC Feed Adapter Cable	T19058-G1	1
3	LCD Power Distribution Cable	T17766-G2	1
4	Reflector Assembly	T17622-G9	*
5	Display Board	T18981-G1	*
6	Faceplate, Clear	R15176-02	*
7	Filter, Orange	R19211-041	*
8	Mask, Sixth Digit	R19927-01	*
9	Gasket, Bezel	R15596	*
10	PPU Board	T19111-G1	*
11	Filter, Orange	R20016-031	*
12	Faceplate, Clear	K92814-02	*
13	Gasket, Display Window	K92815-02	*
14	Mask	N23531-01	*
15	Display Interface Board	T19077-G1	*
16	Software Kit	Q12200-02	-
17	LCD Main Data Cable Assembly	T19059-G1	1
18	Bottom Support Bracket Assembly	T15105-G1	*
19	Top Support Bracket Assembly	T15106-G1	*
20	Display Controller Power Cable Assembly	R19949-G1	*
21	Spacer	Q10383-02	*
22	Screw 4.40 x 3/4"	Q11270-125	*

* Quantity varies with model.

Plate 2 MPD®-3 Chassis

Three-Grade, Four-Grade, Fixed Blender,
Pro Blender and Precision Blender
For CRIND™ Parts see PT-1736 CRIND Parts List.

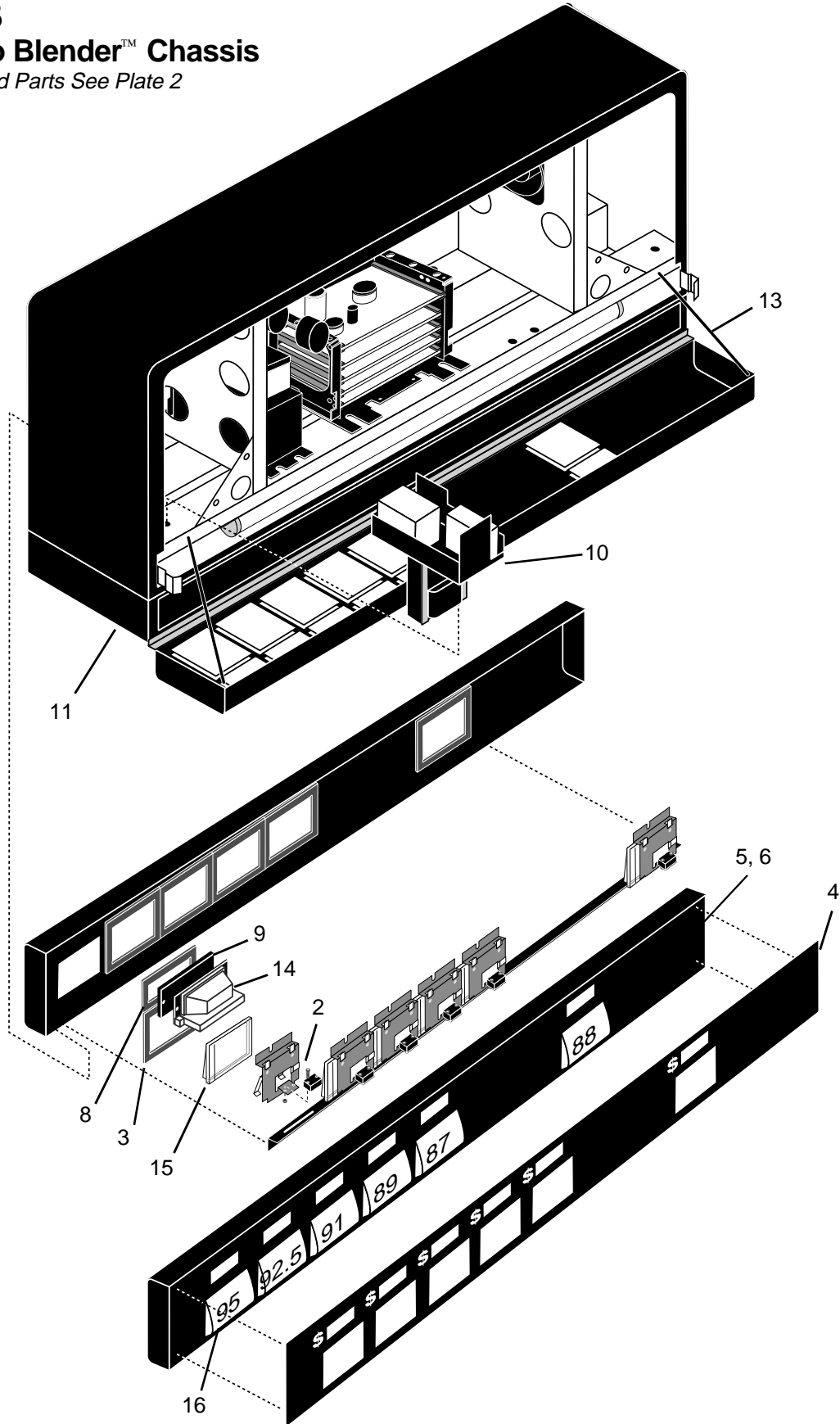


#	Part Description	Part Number	Qty.
1	Main Power Supply	See Plate 9	1
2	Fluorescent Lamp	N21144-G2	2
3	Leaf Spring, Lamp Socket	N21142	4
4	Lamp Socket	K87111	4
5	Chassis Assembly	W01527-G3	1
6	Ballast, 120VAC, 60Hz	Q10883-02	1
	Ballast, 220-240VAC, 50/60Hz	Q10797-02	-
7	Housing Assembly Includes housing, main cable, fan, ballast, hinges, lamp sockets	T17670-GXX	1
	Three-Grade, Lighted	T17670-G01	-
	Three-Grade, Unlighted	T17670-G02	-
	Three-Grade, Export, Lighted	T17670-G03	-
	Four-Grade, Unlighted	T17670-G04	-
	Four-Grade, Lighted	T17670-G08	-
8	Top Housing	T13404-G2	1
9	Fan	Q10355-04	1
10	Thermostat	Q10465-02	1
11	Fan Cord	Q10391-02	1
12	Card Cage Assembly	See Plate 8	1
13	Power Supply Precision Blender	W02453-G2	1
14	Access Panel Assembly, Three-Grade	T13698 *	2
15	One Piece Brand Panels *	T13698-G2	-
16	Three Piece Brand Panels *	T13698-G3	-
17	Access Panel Assembly, Four-Grade	T17367 *	2
18	One Piece Brand Panels	T17367-G2	-
19	Four Piece Brand Panels	T17367-G1	-
20	Lock and Keys, Black	Q10898-11	2
	Lock and Keys, Stainless	Q10898-12	2
	Keys Only	Q10898-115	-
	Lock/Keys, Black, Slide-in Panels	Q12541-01	2
	Lock/Keys, Stainless, Slide-in Panels	Q12541-02	2
	Keys Only	Q12542-01	-

* Order entry for graphics.

Plate 3 MPD Pro Blender™ Chassis

For Standard Parts See Plate 2



#	Part Description	Part Number	Qty.
1	Support Switch Assembly	R18838-G1	*
2	Grade Select Switch Assembly	Q12170-01	*
3	Grade Switch Gasket	R18842-01	*
4	Access Graphics Panel	T17380-XX**	2
5	Access Panel Assy. (Includes grade select switches, support switches, LCD Modules)	-	*
	Front Assembly (5+1)	W02444-G01	-
	Rear Assembly (5+1)	W02444-G02	-
	Front Assembly (5+0)	W02444-G03	-
	Rear Assembly (5+0)	W02444-G04	-
	Front Assembly (4+1)	W02444-G05	-
	Rear Assembly (4+1)	W02444-G06	-
	Front Assembly (4+0)	W02444-G07	-
	Rear Assembly (4+0)	W02444-G08	-
	Front Assembly (3+1)	W02444-G09	-
	Rear Assembly (3+1)	W02444-G10	-
	Front Assembly (3+0)	W02444-G11	-
	Rear Assembly (3+0)	W02444-G12	-
	Blank Assembly	W02444-G13	-
	Front Assembly (2+1)	W02444-G15	-
Rear Assembly (2+1)	W02444-G16	-	
6	Access Panel Only	T17384-XX	*
	Front	-	-
	Rear	T17384-G2	-
	Blank	T17384-G3	-
7	PPU Spacer	Q10340-97	*
8	PPU Display Gasket	R18689-01	*
9	PPU Display Window	R18688-01	*
10	Blender Power Supply	W02421-G1	1
11	Channel Assembly	T17279-G1	2
12	Housing Assembly (Includes housing, main cable, fan, hinges)	T16036-G8	1
13	Lanyard	N22887-G1	2
14	Liquid Crystal Display	Q12041-01	*
15	Grade Select Button	T17286-01	*
16	Octane Cards	R18839-01	-

** Order entry for graphics.

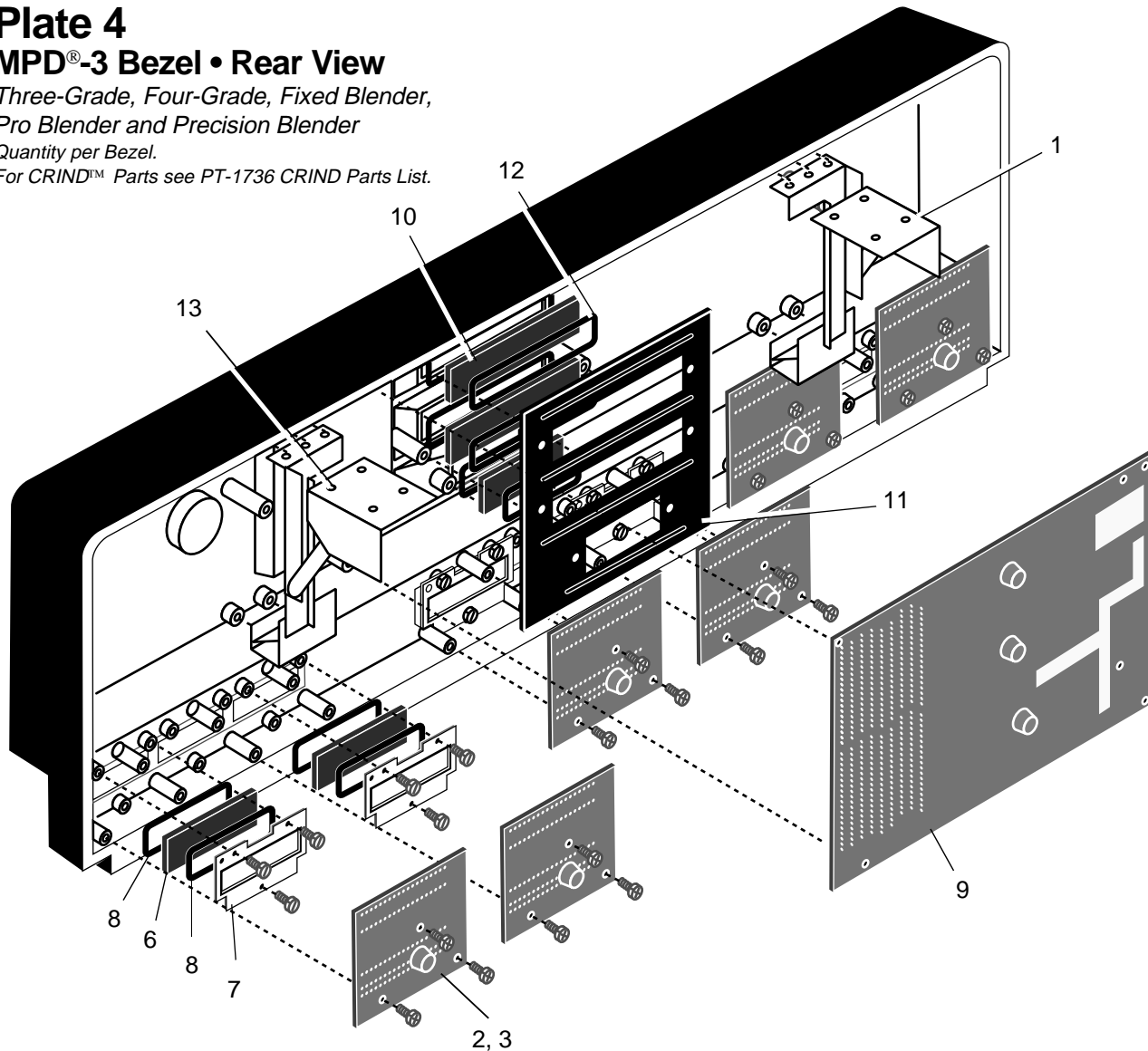
* Quantity varies with model.

Plate 4 MPD®-3 Bezel • Rear View

Three-Grade, Four-Grade, Fixed Blender,
Pro Blender and Precision Blender

Quantity per Bezel.

For CRIND™ Parts see PT-1736 CRIND Parts List.



#	Part Description	Part Number	Qty.
1	Left Hinge Assembly	T13678-G1	1
2	PPU Display Board (use with bolt-in panels only)	T15994-G1	1
3	PPU Display (replaces T15994)	T17339-G1	*
4	Cable For T17339-G1S	R18393-G2	*
5	PPU Board Replacement Kit (includes T17339 and R18393)	K93367	*
6	PPU Filter Window	R16474-01	*
7	PPU Backup Plate	R15965	*
8	PPU Display Gasket	R15966-01	*
9	Main Display Board	W02107-G2	*
10	Main Display Filter Window	N22673-02	*
11	Main Display Backup Plate	R15963	*
12	Main Display Gasket	R15966-02	*
13	Right Hinge Assembly	T13678-G2	1

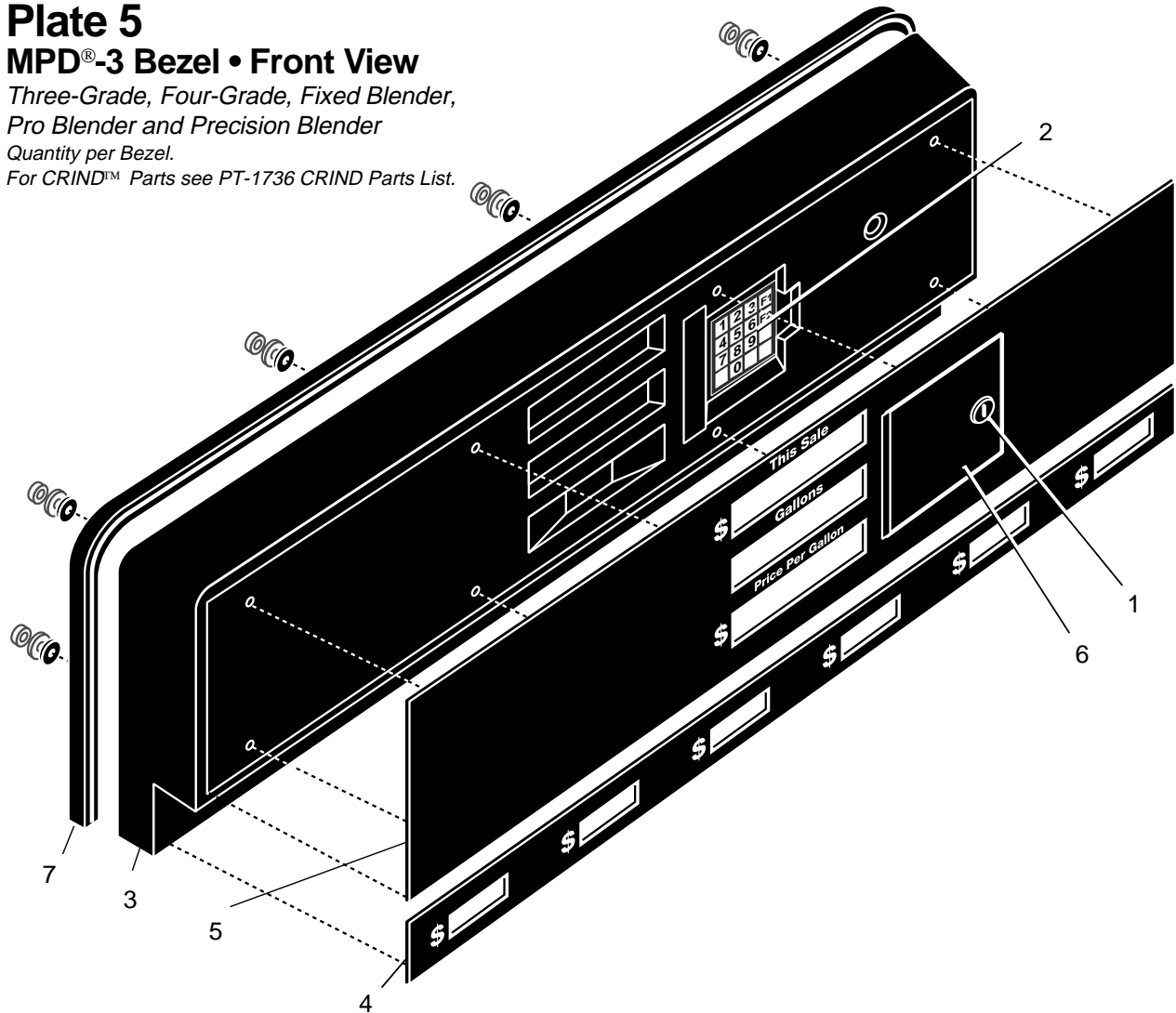
* As required.

Plate 5 MPD®-3 Bezel • Front View

Three-Grade, Four-Grade, Fixed Blender,
Pro Blender and Precision Blender

Quantity per Bezel.

For CRIND™ Parts see PT-1736 CRIND Parts List.

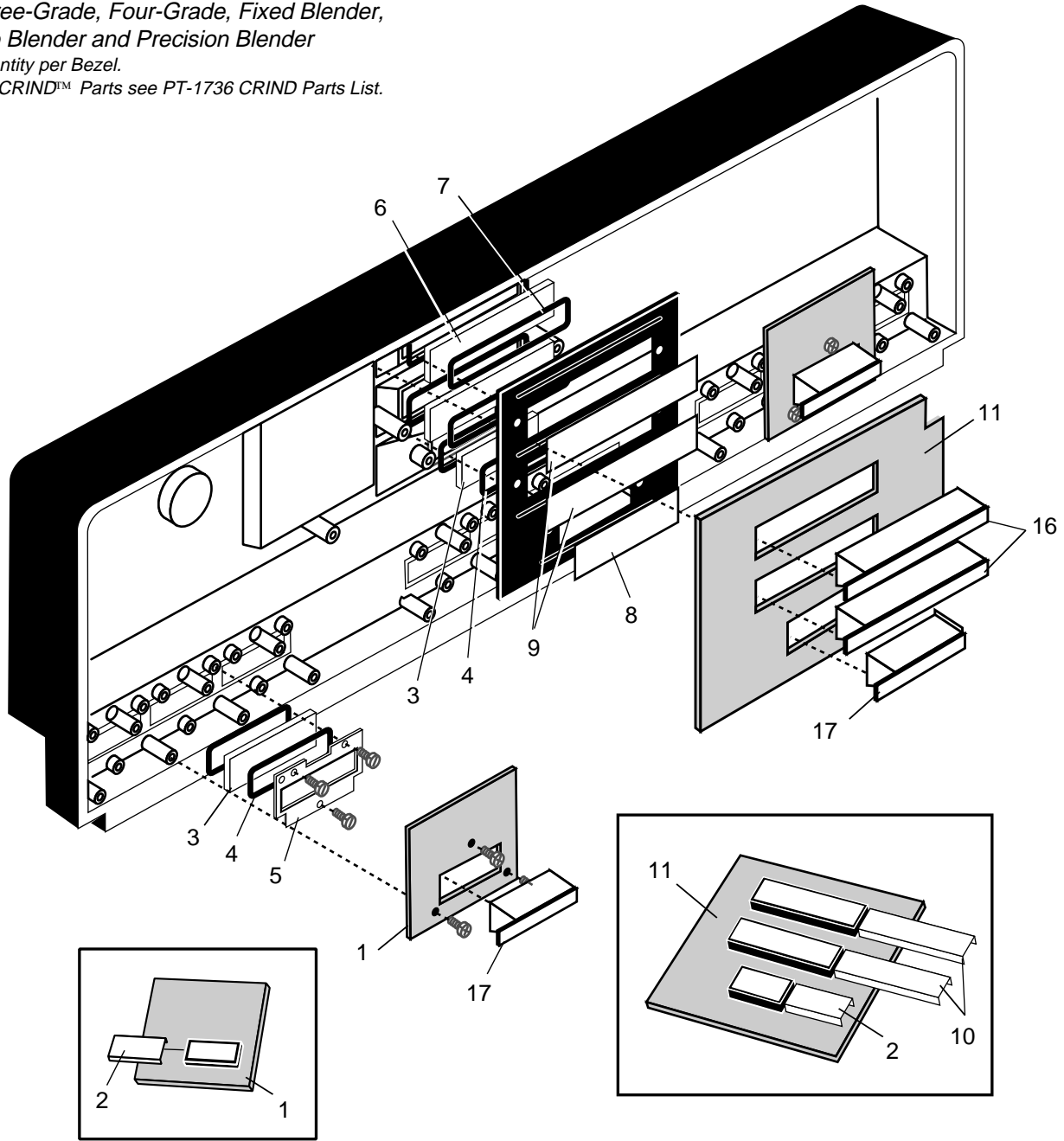


#	Part Description	Part Number	Qty.
1	Lock and Keys, Black	See Plate 2	1
2	Operator Keypad	T17549-G1	1
	Operator Panel, Blank	R15891-G3	2
	Operator Keypad Panel Assembly, Slide-in Panels	T17549-G1	1
3	Bezel Assembly (Includes bezel, gaskets, panels, displays, cables)	-	1
	Three-Grade*, Bolt-in Panels	T16383-GXX	-
	Four-Grade*, Bolt-in Panels	T17304-GXX	-
	Three and Four-Grade*, Slide-in Panels	T17490-GXX	-
4	PPU Panel*, Bolt-in Panels	T13403-GXX	-
	PPU Panel*, Slide-in Panels	T17445-XX	-
5	Face Plate*, Bolt-in Panels	W01901-GX	-
	Face Plate*, Slide-in Panels	T17446-XX	-
6	Gasket, Operator Door	R15995	1
7	U-Shaped Gasket	R15970	1

* Order entry for graphics.

Plate 6 MPD®-3 • LCD Retrofit

Three-Grade, Four-Grade, Fixed Blender,
Pro Blender and Precision Blender
Quantity per Bezel.
For CRIND™ Parts see PT-1736 CRIND Parts List.



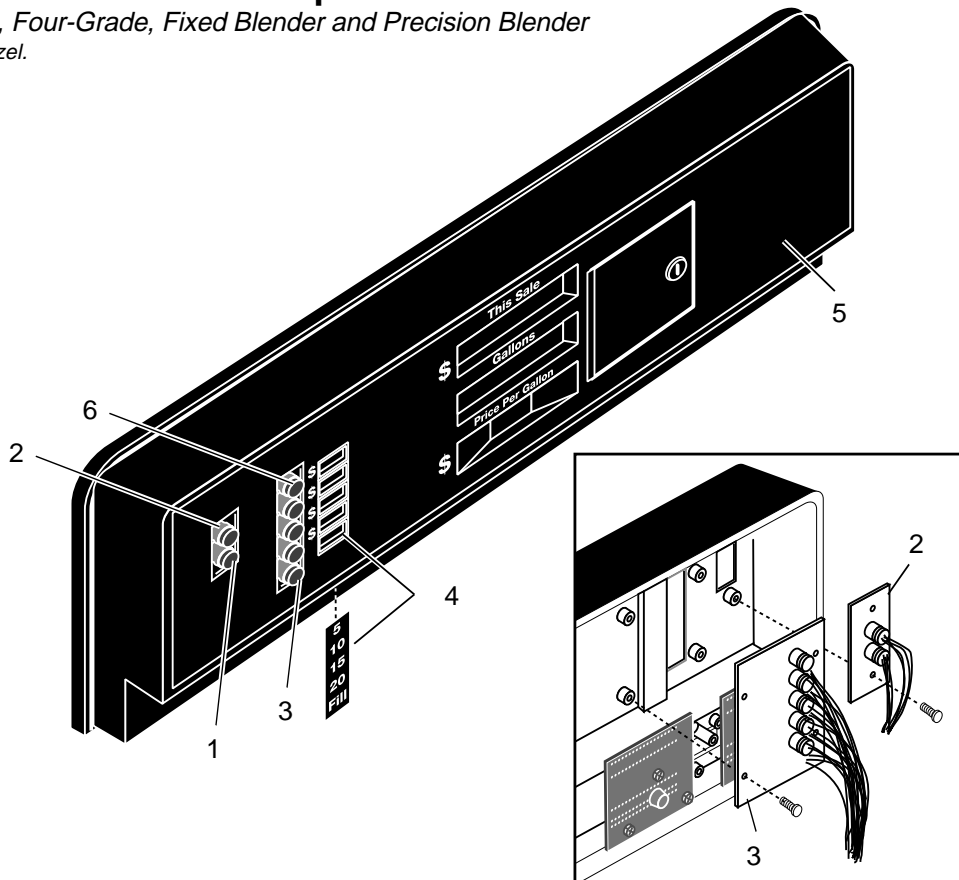
#	Part Description	Part Number	Qty.
1	PPU Board	T19111-G1	*
2	Filter, Orange	R20016-031	*
3	Faceplate, Clear	K92814-02	*
4	Gasket, Display Window	R15966-01	*
5	Mounting Plate, PPU Display	R15965-02	*
6	Faceplate, Clear	R16474-12	2
7	Front Gasket	R15966-02	4
8	Mounting Plate Mask	R20022-01	1
9	Mounting Plate Mask	R20023-01	2
10	Filter, Orange	R20016-011	2
11	Main Display Board	T19108-G1	1
12	Power Supply Assembly	T17772-G4	1
13	Mounting Bracket Assembly	T18711-G1	1
14	LCD Power Distribution Cable	T17938-G3	1
15	24VAC Feed Cable Assembly	T19058-G1	1
16	Reflector Assembly	T17622-G6	2
17	Reflector Assembly	T17622-G9	*

* Quantity varies with model.

Plate 7.1

MPD®-3 Bezel • Customer Options MAC

Three-Grade, Four-Grade, Fixed Blender and Precision Blender
Quantity per Bezel.



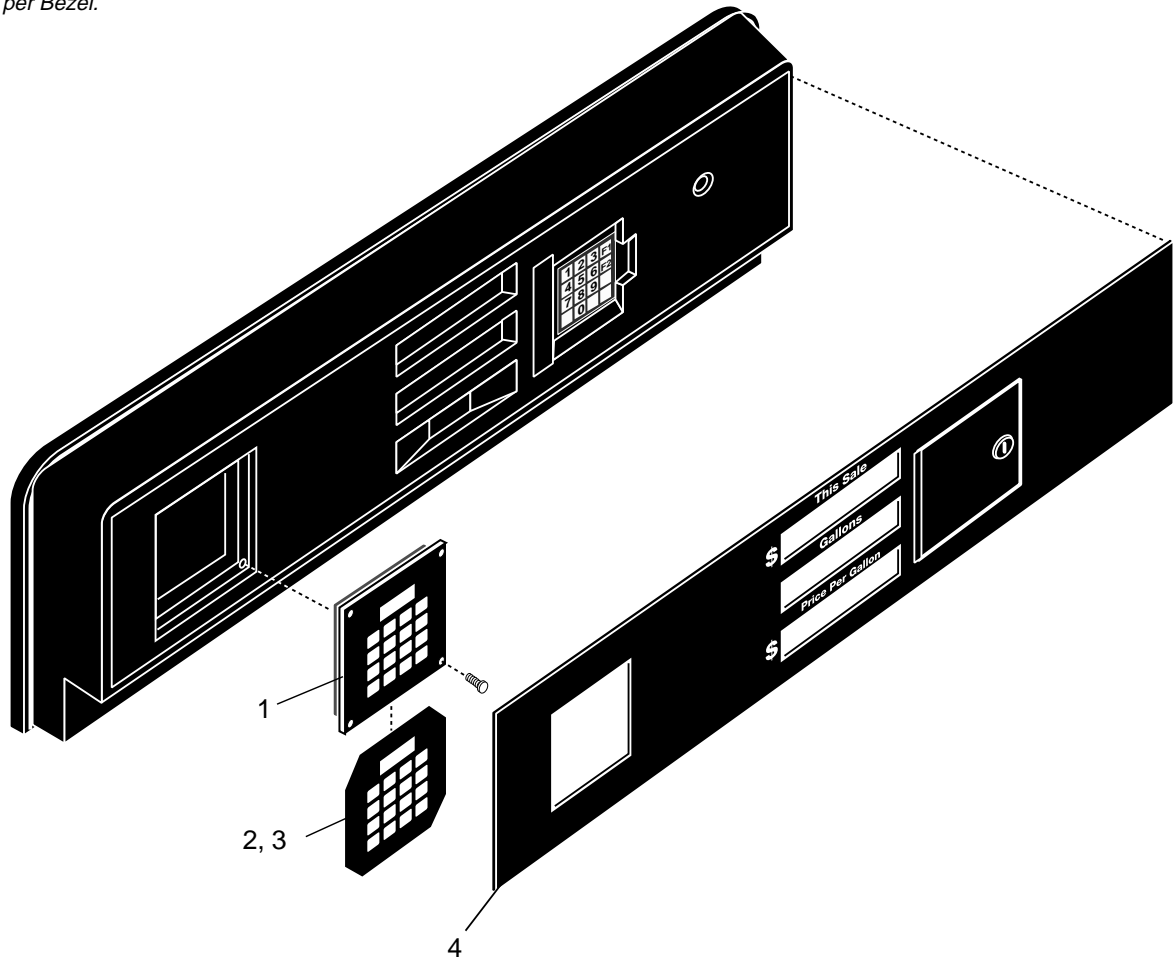
#	Part Description	Part Number	Qty.
1	Switch Assembly	K93053-01	1
2	Cash/Credit Assembly, Small Plate	R18391-G1	1
	Version 2 Cash/Credit Assembly, Large Panel (not shown)	T16560-G1	1
	Cash/Credit Membrane Switch, Slide-in Panels (not shown)	R19196-G1	1
3	Customer Preset Assembly	T16492-G1	1
	Customer Preset, Top Fill Button	T16492-G2	1
	Cash/Credit/Customer Preset Assembly (not shown)	T16489-G1	1
	Cash/Credit/Customer Preset Assembly, Top Fill Button	T16489-G2	1
4	Price Posting Bar	R16000-G3	1
	Price Posting Bar, Top Fill Button	R16000-G2	1
	Price Posting Decal	R17139-01	1
5	Face Plate *	See Plate 5	-
6	Lamp and Switch Kit (includes 6a-6c, Hardware)	K93053-01	-
6a	Rubber Boot	Q10899-02	-
6b	Red Lens	Q10900-02	-
6c	Lamp (14VAC, 0.75AMPS)	Q10231-09	-

* Order entry for graphics.

Plate 7.2

MPD®-3 Bezel • Customer Options PMI

Three-Grade, Four-Grade, Fixed Blender and Precision Blender
 Quantity per Bezel.

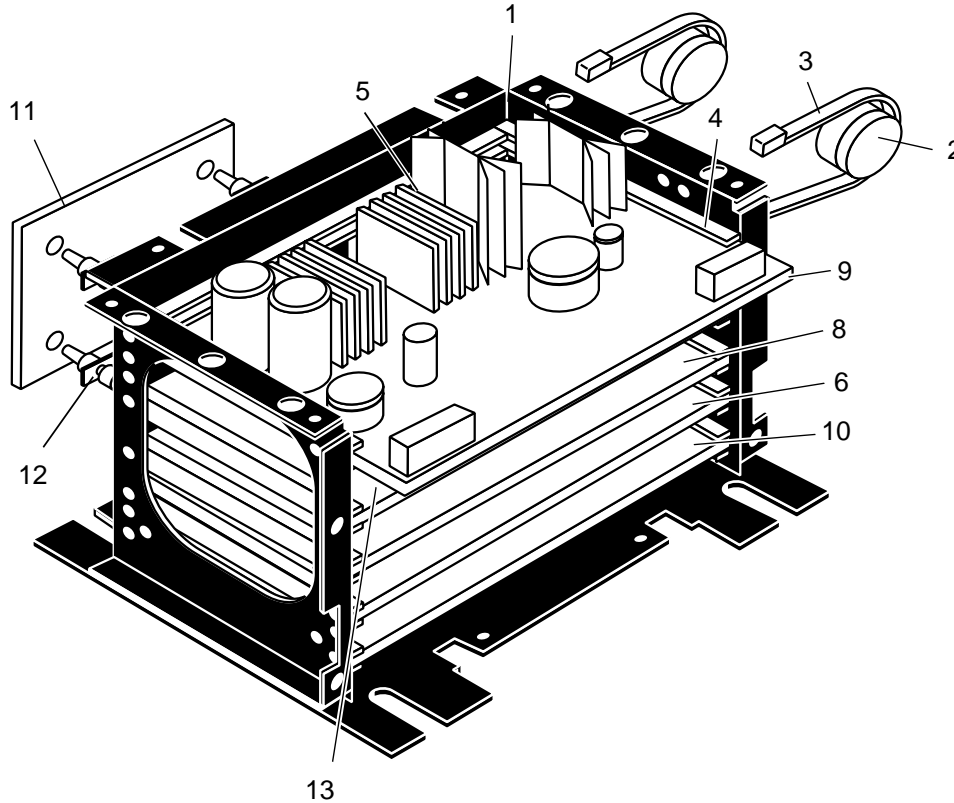


#	Part Description	Part Number	Qty.
1	Programmable Preset Display Assembly	R19295-G2	1
2	Keypad Overlay *	T17885-XX	-
3	Keypad Overlay (generic English graphics)	T17885-01	-
4	Face Plate *	See Plate 5	1

* Order entry for graphics.

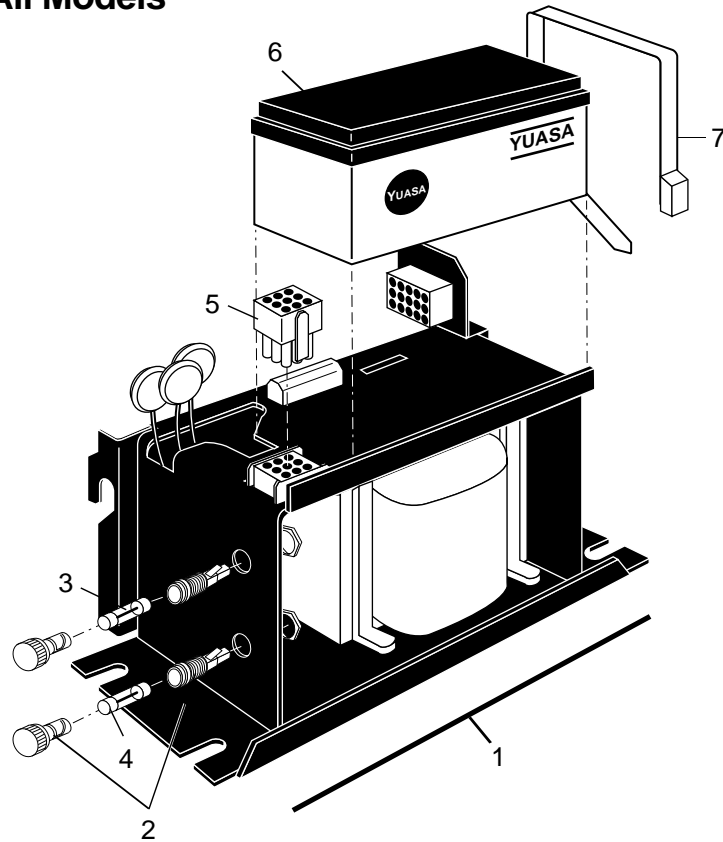
Plate 8 Modular Card Cage • All Models

For VaporVac™ Parts see PT-1831 VaporVac Illustrated Parts Manual.
For CRIND™ Parts see PT-1736 CRIND Parts List.



#	Part Description	Part Number	Qty.
1	Card Cage (includes 4-5)	T17288-G3	1
2	Audio Transducer (beeper)	Q11763-01	1
3	Cable Tie	Q10178-07	1
4	Card Guide 4.5"	Q10233-05	10
5	Card Guide 8.0"	Q10233-06	3
6	Hydraulics Interface Board, All Other Units	T18024-G2	1
	Hydraulics Interface Board, Pro Blender and Precision Blender	T18156-G1	1
7	Customer Programmable Preset Board (optional)	T17331-G2	1
	Programmable Preset Software Kit	K93976-G1	1
8	Pump Controller Board, SID Displays	T15841-G2	1
	Software Kit, Pro Blender	K93345-G1	1
	Software Kit, Precision Blender	K93385-G2	1
	Software Kit, All Other Units	K92631-G2	1
9	Main Regulator Board	T17723-G1	1
10	Valve Driver Board	T16598-G2	1
11	Customer Interface Board	T16892-G1	1
12	Circuit Board Support	Q10651-02	-
13	SID Display Power Board	T16394-G1	1

Plate 9
Power Supplies • All Models



#	Part Description	Part Number	Qty.
1	Main Power Supply, 115VAC (includes voltage select plug #5a)	K93393-01	1
	Main Power Supply, 230VAC (includes voltage select plugs #5b-5d)	K93393-02	1
2	Fuse Holder	Q11781-01	2
3	Fuse, F2 (4Amp, 250VAC, Slo-Blo)	Q10131-26	1
4	Fuse, F1 (3Amp, 250VAC, Slo-Blo)	Q10131-03	1
5a	Voltage Select Plug, 115VAC	N21120-G6	1
5b	Voltage Select Plug, 220VAC	N21120-G8	1
5c	Voltage Select Plug, 230VAC	N21120-G9	1
5d	Voltage Select Plug, 240VAC	N21120-G10	1
6	Battery, 12 volt 2.5Amp	Q11955-01	1
7	Tie Wrap, Battery	Q10178-06	1

Plate 10.1 MPD®-1 Cables

Cable Assembly Description	Product *	Associated Plugs and Jacks	Part Number
Main Cable Harness (CA1)	A, B, C	J601, J502, J101, E1, J104, P401, WT2, WT10, J602, J504, J701, J702, P403, J103, E2, E3, BUZA/B	T17094-G4
Main Display Power Cable	A, B, C	P602, J302, J802A/B, J133A/B, J304	T16503-G1
Hydraulic Interface to Controller (Ribbon)	A, B, C	J102, J205	R17996-G1
Controller to Operator Keypad (Ribbon)	A, B, C	J805, J901	R18136-G1
Display Power to Main Regulator (Ribbon)	A, B, C	J301, J503	R17994-G1
Controller to Main Regulator (Ribbon)	A, B, C	J301, J501	R17995-G1
Ground Wire	A, B, C	E2, E4	R15634-G39
Hydraulic Interface to STP Driver (Ribbon)	C	J103, J702	T16707-G002
Ballast Cable Assy.	A, B, C		T16595-G1
PPU Box Display Power	A, B		T16504-G1
	C		T16504-G2
PPU Box Display (Ribbon)	A, B		T16585-G1
	C		T16586-G2
PPU Box PPU Display	A, B, C	J124, P122	R18393-G2

***Product Codes:**

- A MPD-1 Three-Grade
- B MPD-1 Fixed-Blender
- C MPD-1 Four-Grade

Plate 10.2
MPD®-3 Cables

Cable Assembly Description	Product *	Associated Plugs and Jacks	Part Number
Main Cable Harness (CA1)	A	P401, WT1, WT2, WT5, WT7, E1, J601, J502, J101, J103, J602, J504, BUZA/B, P402	T17094-G1
	B	P401, WT1, WT2, WT5, WT7, E1, J601, J502, J101, J103, J602, J504, BUZA/B, P402	T17346-G1
	C	P401, WT1, WT2, WT5, WT7, E1, J601, J502, J101, J103, J602, J504, BUZA/B, P402, P403, J701, J703, J704, J705, J708	W02455-G1
	D	P401, WT5, WT7, J601, J502, J101, J103, J602, J504, BUZA/B, P402, P403, J701, J703, J704, J708, P124A/B	W02423-G1
Main Display Power Cable	A, C	J802, P132, J122A/B/C/D/E/F	T16350-G1
	B	J802, P132, J122A/B/C/D/E/F/G/H	T17347-G1
	D	J302, J809A/B, P602, J802, P809A/B	T17293-G1
		J802, P809A/B	T17292-G1
Hydraulic Interface to Controller (Ribbon)	A, B, C, D	J102, J205	R17996-G1
	D	J103, J702	T17292-G002
Controller to Operator Keypad (Ribbon)	A, B, C, D	J805, J901	R18136-G1
Display Power to Main Regulator (Ribbon)	A, B, C, D	J301, J503	R17994-G1
Controller to Main Regulator (Ribbon)	A, B, C, D	J201, J501	R17995-G1
PPU (Ribbon)	A, C	J804, J121A/B/C/D/E/F	T16353-G1
	B	J804, J121A/B/C/D/E/F/G/H	T17348-G1
Ground Wire	A, B, C, D		R15634-G39
PPU Display to Main Cable	A, B, C	J124, P122	R18393-G2
Display Power to PPU's	A, B, C	J303, J304, J302, P602, J132A/B	T16349-G1
Main Display PPU Power	D	J804, J120	R18843-G1
Customer Interface to LCD PPU	D	J123, J125	R18824-G2
Customer Interface to Microswitches	D	J126, J134	R18840-G1
LCD PPU Back light	D	P124, J122	T17291-G1
PPU's/Customer Interface Jumper	D	P125, J121	T17280-G3
Grade Select	D	J126, S1-S6	T17280-G3
Main Display to Controller (Ribbon)	A, B, C	J203, P122	R18163-G1
	A, B, C, D	J801A/B, J204	T16351-G1
	D	P801A, J801A	R18695-G1
		J203, J806	R18163-G1
Hydraulic Interface to STP Driver (Ribbon)	A, B, C	J103, J702	T16707-G002
Main Display to Main Display Power	A, B, C	J809, P802	R18165-G2
Cash/Credit Customer Preset	A, B, C	J202, P130A/B	R18376-G2
Memory Clear/Master Reset	A, B, C, D		R18479-G1

***Product Codes:**

- A MPD-3 Three-Grade or Fixed Blender
- B MPD-3 Four-Grade
- C MPD Precision Blender
- D MPD Pro Blender